

A-levels

2025-2026



COME AND SEE FOR YOURSELF

Open Evenings

Come along to one of our open evenings to see our facilities and explore the range of courses on offer:

07 January 2025 - A-levels

14 January 2025 - All courses

28 April 2025 - All courses

College Tours

If you miss our open evenings, or want to look around when it's a little quieter, just contact our Admissions team to book a tour: admissions@pembrokeshire.ac.uk
0800 9 776 788

Taster & Experience Days

Keep an eye on our website and social media for details of tasters and experience days during terms 2 and 3.

Transition Day

Everyone who has applied for a full-time course will be invited to attend a Transition Day on 02 July 2025.

HI | HELLO | SHWMAE | HEY | HOLA

WELCOME

YOUR JOURNEY STARTS HERE...

Welcome to Pembrokeshire College – where your academic journey transforms into an exciting adventure!

At College, we believe that A-levels are more than just exams – they're a gateway to unlocking your potential and preparing you for the future. Whether you're passionate about science, humanities, or the arts, our diverse range of A-level courses is designed to ignite your curiosity, challenge your intellect, and equip you with the skills to excel in higher education and beyond.

Whilst here, you'll experience a dynamic learning environment filled with dedicated lecturers, cutting-edge resources, and a vibrant community of like-minded students. Your education is about more than just passing exams; it's about growing as an individual, discovering new interests, and pursuing your passions.

I look forward to welcoming you to Pembrokeshire College.



Dr Barry Walters
Principal



Education is the most powerful weapon which you can use to change the world

Nelson Mandela

MAE'R LLYFRYN HWN AR GAEL YN GYMRAEG.
THIS BOOKLET IS AVAILABLE IN WELSH.

26 A-LEVEL SUBJECTS



OUR OFFER OF 26 SUBJECTS
REPRESENTS THE WIDEST BREADTH
OF SUBJECTS WITHIN THE COUNTY

DID YOU KNOW...

IN SUMMER 2024



a higher percentage of learners passed their A-level programme at Pembrokeshire College in comparison to other Welsh centres



over a quarter of our A2 learners achieved A*-A grades



a higher percentage of AS learners passed their first year programme here in comparison to other Welsh centres



a higher percentage of learners achieved A*-C grades at A-level at Pembrokeshire College in comparison to other Welsh centres



A-level learners in Biology, Drama, Economics, Geography, Media Studies, Physics and Psychology outperformed their Welsh counterparts in every grade boundary



We annually support a number of alumni students with their UCAS application during their gap year(s)



Annual grant funded bids have allowed fully-funded learner visits to Cardiff and Barcelona



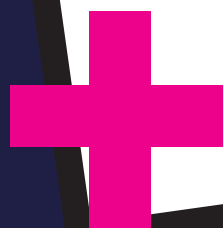
Our faculty office facilitates an open-door policy allowing learners to access support at any time of the day

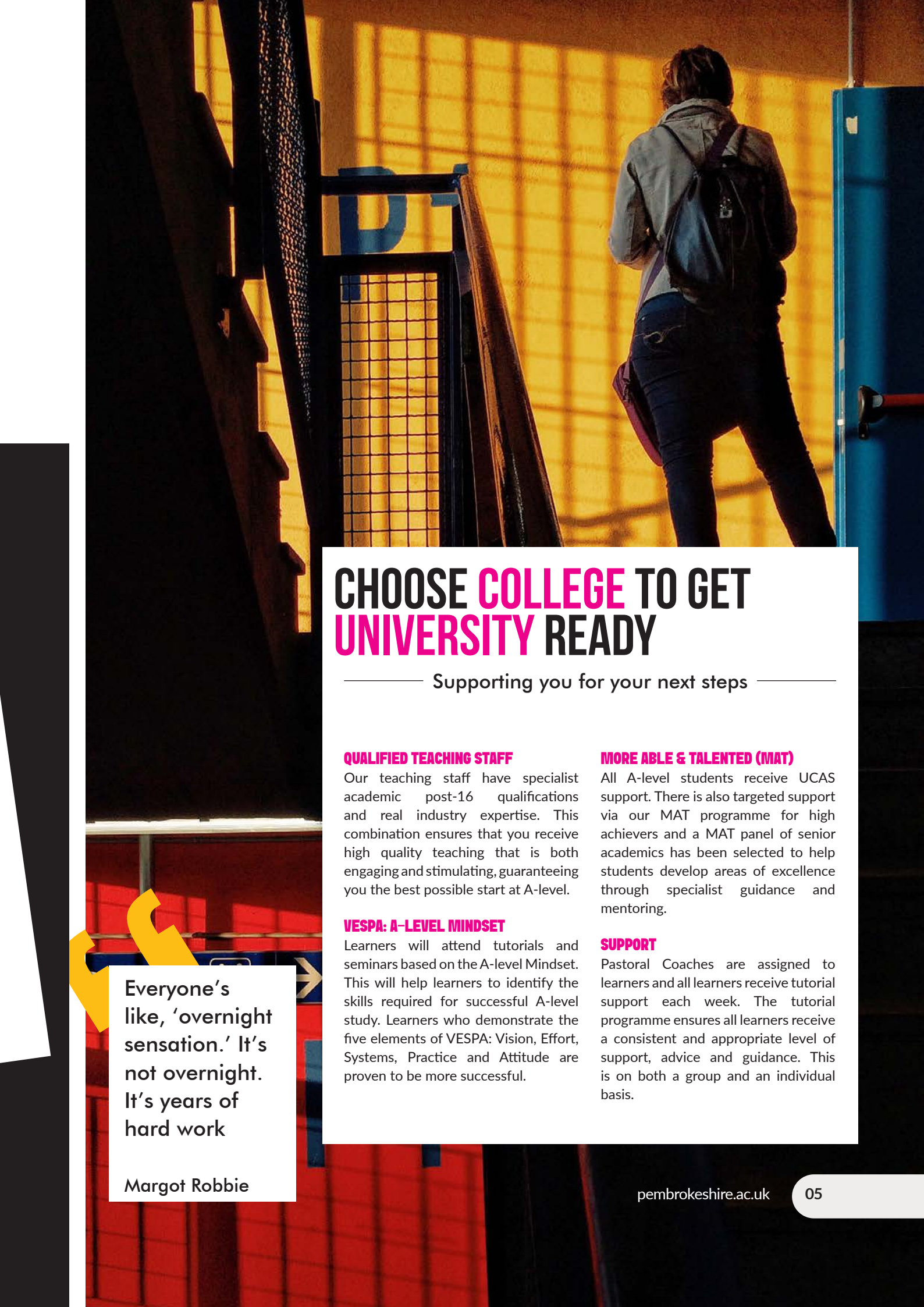


Every year we welcome learners from international and independent settings who successfully integrate to College life

- Biology
- Business Studies
- Chemistry
- Computer Science
- Drama & Theatre Studies
- Economics
- English Language & Literature
- English Literature
- Fine Art
- French
- Further Mathematics
- Geography
- Government & Politics
- History
- Law
- Mathematics
- Media Studies
- Music
- Philosophy, Ethics, Beliefs & Values
- Photography
- Physical Education
- Physics
- Psychology
- Sociology
- Spanish
- Welsh - 2nd Language

The Advanced Skills
Baccalaureate Wales is
normally studied alongside
at least 3 A-levels.





CHOOSE COLLEGE TO GET UNIVERSITY READY

Supporting you for your next steps

QUALIFIED TEACHING STAFF

Our teaching staff have specialist academic post-16 qualifications and real industry expertise. This combination ensures that you receive high quality teaching that is both engaging and stimulating, guaranteeing you the best possible start at A-level.

VESPA: A-LEVEL MINDSET

Learners will attend tutorials and seminars based on the A-level Mindset. This will help learners to identify the skills required for successful A-level study. Learners who demonstrate the five elements of VESPA: Vision, Effort, Systems, Practice and Attitude are proven to be more successful.

MORE ABLE & TALENTED (MAT)

All A-level students receive UCAS support. There is also targeted support via our MAT programme for high achievers and a MAT panel of senior academics has been selected to help students develop areas of excellence through specialist guidance and mentoring.

SUPPORT

Pastoral Coaches are assigned to learners and all learners receive tutorial support each week. The tutorial programme ensures all learners receive a consistent and appropriate level of support, advice and guidance. This is on both a group and an individual basis.

Everyone's like, 'overnight sensation.' It's not overnight. It's years of hard work

Margot Robbie

GET UNIVERSITY READY

Pembrokeshire College has established a strong reputation for preparing students for entry to universities both in the UK and overseas.

We specialise in preparing students for their university interviews and equipping them with the knowledge to follow their chosen degree pathway.

We have extensive experience in helping learners to gain acceptance onto the following disciplines:

- Medicine
- Dentistry
- Veterinary Science
- Midwifery
- Engineering
- Economics
- Finance
- Optometry
- Business
- Maths
- Law

University destinations over the past three years include:

University of Oxford
University of Cambridge
University of Bristol
University of Leeds
University of Liverpool
University of Exeter
Cardiff University
University of Bath



FUTURE CAREERS

— Get Ready for the Future —

Whilst there are many existing careers that we will likely continue to need long into the future such as engineers, lawyers, dentists and police officers, many of the careers that you will go on to pursue don't even exist yet, here are a few that are on the horizon:

AI BUSINESS MANAGER

AI cannot sell itself. This role will be in charge of promoting and selling AI to new and existing companies.

CLIMATE CHANGE REVERSAL SPECIALIST

A new breed of engineer/scientists will emerge with the ability to rebuild ecosystems around the planet, such as rainforests and ocean beds.

HEAD OF MACHINE PERSONALITY DESIGN

Automation is working to create robots that have the same personality and taste as the customer.

SELF-DRIVING CAR MECHANIC

Whilst self-driving cars are already on the horizon, they will still require mechanics in order to fix them.

SPACE JUNK RECYCLER

These people will identify the orbital locations where junk is greatest. They will then develop cost effective methods to remove it from orbit.

SPACE MINER

Fossil fuels and other rare elements are running out and will eventually cease to exist on our planet. Space miners could retrieve rare Earth elements from the Moon or asteroids.

SPACE TOURISM GUIDE

Voyages into space are beginning to take off with the appearance of Virgin Galactic. Commercial flights to space will become the next top holiday destination.

VERTICAL FARMER

Farmers will use technology to carefully raise engineered crops, growing crops vertically to maximise urban spaces.

VIRTUAL IDENTITY DEFENDER

With advancements in AI the risk of fake documents increases. This role will create digital watermarks that can be authenticated to prove the truth.



GETTING STARTED...

THE AS/A2 STUDY PROGRAMME CONSISTS OF THE FOLLOWING:

- » All learners will study the Advanced Skills Baccalaureate Wales unless they opt to take four A-levels following exceptional GCSE performance.
- » Learners will be expected to attend both personal and group tutorials, these are mandatory timetabled sessions.
- » Learners achieving six A* grades at GCSE can choose to study four subjects

VESPA: A-LEVEL MINDSET

Learners will attend tutorials and seminars based on the A-level Mindset.
This will help learners to identify the skills required for successful A-level study.

Learners who demonstrate the five elements of VESPA are more successful:

VISION	You know what you want to achieve
EFFORT	You put in many hours of proactive independent study
SYSTEMS	You organise your learning resources and your time
PRACTICE	You develop your skills through consistent practice
ATTITUDE	You respond constructively to setbacks



STUDENT TESTIMONIAL

Student Governor: Tomos

Here is what Student Governor, Tomos has to say about studying A-levels at Pembrokeshire College:

There are many opportunities available in the College, one of which is the governorship, which also led me to be a part of the Learner Executive. The Learner Executive doesn't only get student voice communicated, it also allows the College to make a connection with the community. As part of the Learner Executive, I have had the opportunity to meet many local

decision makers and interesting individuals and better understand what the community thinks about youth voice and how the students in the College can be a part of it.

Being part of the Learner Executive has also allowed me to meet new people from different schools and backgrounds. The mix of opportunities and support really

helps students to build their CV and skills, which will be helpful in the future. Without the support of staff, which I've had throughout my time in college, I would have never achieved what I have achieved to date.



Anything is possible when you have the right
people there to support you

Misty Copeland

MEET YOUR SUPPORT TEAM



EMMA DAVIES
Head of Faculty



MICHELLE GRIFFITHS
Interim Head of Faculty /
Curriculum Area Manager



CLAIRE BERRY
Interim
Curriculum Area Manager



SARA HANNON
Faculty Co-ordinator



REECE MORRIS
Faculty Administrator



LYN WARD
Learning Coach

Think**MORE**. Learn**MORE**. Be**MORE**.

OUR SUPPORT SERVICES

KEEPING YOU ON TRACK:

AS & A2 Seminars
Online Learner Profile
Personal Tutorials
Target Setting

MEET YOUR SUPPORT TEAM:



LIZ DEVONALD
Pastoral Coach



WENDY STEWART
Pastoral Coach



LAURA RICHARDS
Pastoral Coach



CLARE JACQUES
Pastoral Coach

SUPPORT THROUGHOUT YOUR COLLEGE JOURNEY

TRANSITION

At Pembrokeshire College we provide an inclusive learning environment offering support for all learners to ensure a safe and positive environment for all.

ADVICE AND GUIDANCE

If you're unsure as to what you would like to do, our admissions team are always on hand with impartial advice and guidance to help you choose the right course. If you have any questions please email: admissions@pembrokeshire.ac.uk

COMMUNICATION

EVERY LEARNER HAS A PASTORAL SUPPORT COACH

Pastoral Coaches are assigned to learners and all learners receive tutorial support each week. The tutorial programme ensures all learners receive a consistent and appropriate level of support, advice and guidance. This is on both a group and an individual basis.

MONITORING YOUR PROGRESS

The progress of learners is monitored through the online Learner Profile which allows monitoring and follow-up in 'real time'. Parents and guardians can have access to this information with the permission of the learner. You will be emailed four times a year with a progress review.

TARGET SETTING

Learners are set learning targets through individual tutorials, learning agreements and action plans. All targets are recorded on the Learner Profile and are monitored through the tutorial process. Additional support is provided by Learning Coaches for the achievement of targets.

WE EXPECT 100% ATTENDANCE

All students agree to 100% attendance and a code of conduct at the outset of their course which leads to a sense of shared responsibility. A strong but supportive Student Positive Behaviour and Disciplinary Policy is in place and there is a dedicated resource to work with any student who is at risk of disengagement.

TRANSITION & SUPPORT

At Pembrokeshire College we provide an inclusive learning environment offering support to all learners.

KEEPING LEARNERS ON TRACK

Each learner is assigned to a Pastoral Coach to ensure that they receive a consistent and appropriate level of support, advice and guidance. This can be in group sessions or on an individual basis. All learners agree to 100% attendance and sign a learner agreement at the start of the course which includes the College's expectations of positive behaviour, full attendance and satisfactory completion of work.

AN INCLUSIVE ENVIRONMENT

The College is committed to providing an inclusive and safe environment for all learners. We offer advice and support on all aspects of equality, diversity and inclusion. We provide access to a wide range of assistive technologies and equipment, also physical resources and equipment. We undertake Personal Emergency Evacuation Plans and Risk Assessments and ensure that our campus is accessible for all learners.

ADDITIONAL LEARNING PROVISION

The College adopts a highly inclusive and integrated approach to supporting learners with additional learning needs, which starts while they are in school. Comprehensive transition planning arrangements are in place and are undertaken in partnership with a wide range of specialist agencies, including a specialist Careers Wales Adviser.

The College's Learning Support team work closely with ALNCo's in schools. These members of staff attend school reviews, meet learners and parents or carers at the school, interviews or open events, and meet learners on their transition days. Strong transition arrangements exist between the secondary schools and the College to make transition as smooth as possible.

The College offers a wide range of person-centred Additional Learning Provision, including for example 1:1 or shared LSA, supervision during lunchtimes or breaks, support to and from assistive transport, and personal care. Learning Support is provided by over forty experienced Learning Support Assistants.

SPECIALIST ASSESSOR

A Specialist Assessor will undertake exam access arrangements, dyslexia profiling and screening to determine the nature and level of support needed.

SAFEGUARDING & WELLBEING

The College takes safeguarding and wellbeing very seriously and has an established team which includes: Designated Senior Person, Safeguarding and Wellbeing Officers, Student Nurse, Finance Officer and an Inter-denominational Chaplain. The team also work alongside external agencies to provide referrals, advice, guidance and support.

LOOKED AFTER YOUNG PEOPLE (LAYP) & YOUNG CARERS

The College's Senior Designated Person is responsible for providing transition, care and support services for LAYP and young carers. If you are in care, a care leaver or a young carer please contact: safe@pembrokeshire.ac.uk for advice and support.

KEYS TO SUCCESS: ENGLISH, MATHS & WELSH

CRITICAL SKILLS: MATHS AND ENGLISH

Whether you are looking to go straight into employment or progress to higher level study, English and Maths are viewed by employers and universities as critical skills to have.

Whatever your programme of study, our lecturers and learning support staff are committed to helping you to improve your reading, writing, communication and mathematics skills so you can leave College with the skills you'll need to progress.

IMPROVING YOUR WELSH

All College learners are encouraged to have an appreciation of Welsh language and culture. Learners who have previously completed any learning through the medium of Welsh will be encouraged and supported to maintain and develop those skills.

All learners can access tutorials, essential skills and aspects of their course through the medium of Welsh if they wish to do so.

HELPING YOU TO **REACH** YOUR **GOALS**

Onsite support facilities include:



Careers



College
Nurse



Communication
Support
Workers



Counsellors



Wellbeing
HWB



Student
Finance



Learning
Coaches



Learning
Support
Assistants



Safeguarding,
Wellbeing &
Disciplinary
Officers



Skills Support
Advisors



Equality, Diversity &
Inclusion Support



Pastoral
Coaches



UCAS
Seren Hub



Work Placement
Officer



Safeguardians



Youth Worker

ENRICHMENT GET INVOLVED

We offer our learners a range of enrichment opportunities which run alongside the academic timetable. These activities are supported by visiting experts, staff and volunteers and are open to ALL College learners.

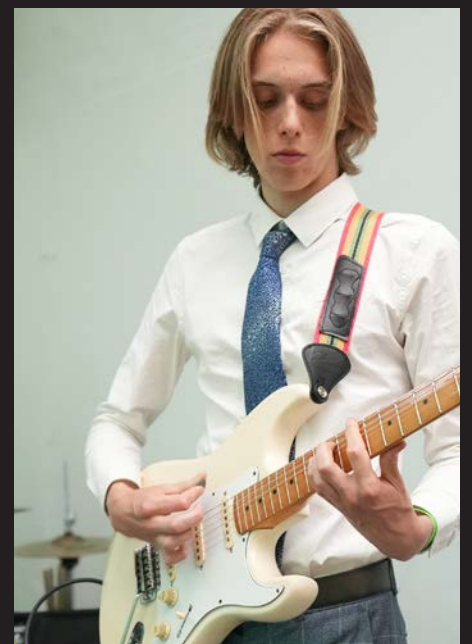
There are also enrichment opportunities such as crafts and games most days in the Atrium.

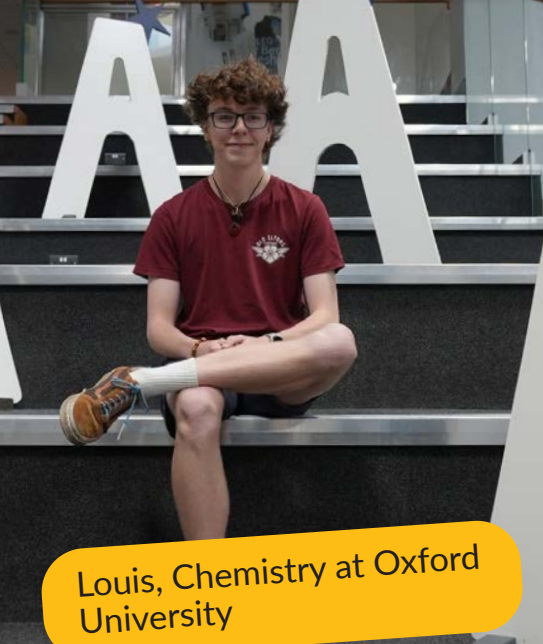
Participating in enrichment activities will support not only your mental health and wellbeing, but will also help you to make new friends, and provide you with opportunities to learn new skills and most importantly have fun.

Enrichment clubs and societies include:

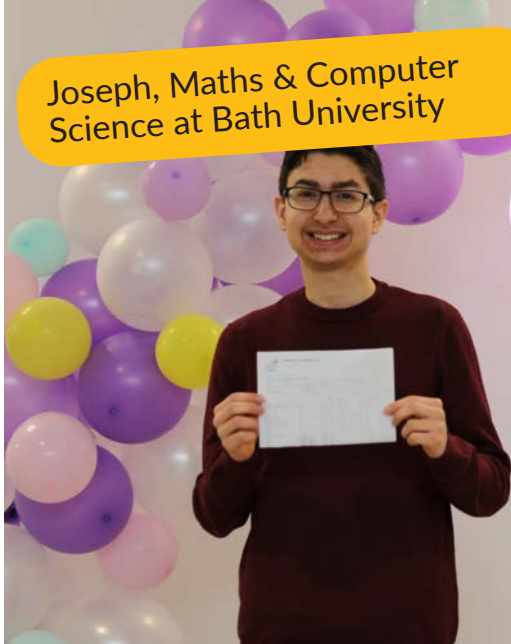
- Sports Academies and Fitness Activities
- Arts and Crafts
- Pride Group
- Debate Club
- Board and Card Games
- Mental Health Support Groups
- Dungeons & Dragons
- Clwb Cymraeg
- Duke of Edinburgh
- Gaming Group
- Safe Space
- Croeso Club
- Mock Trials
- Peripatetic Music Lessons
- County Orchestra







Louis, Chemistry at Oxford University



Joseph, Maths & Computer Science at Bath University

Gwenna, Veterinary Science at Aberystwyth University



Madeleine, Psychology at Cambridge University



Andrew, Engineering at University of Warwick



Oliver, Degree Apprenticeship with Rolls-Royce

OUR AMAZING ALUMNI WHERE ARE THEY NOW?



Rachael, Sports Psychology
at Loughborough University



Cian, Engineering at
Cambridge University



Timali, Medicine at Cardiff
University



Tristan, Law & Politics at
Cardiff University



Eirian, Flight School at
Skyborne

#GET UNIVERSITY READY

Here are just a few of our amazing facilities designed to get you **university** ready...



Science laboratories



Art Studios



The Merlin Theatre



The Hwb – for quiet study



The Library – for study

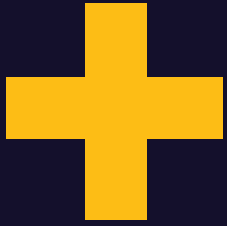


Laptop dispensers



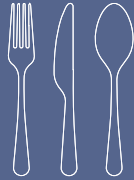
Mac suites

GET **UNIVERSITY** READY
IN **INDUSTRY STANDARD**
FACILITIES



As a Pembrokeshire College learner you'll have access to a whole host of other amazing facilities and resources. From state-of-the-art classrooms to a fully equipped gym, and plenty of spaces to eat and relax.

ENJOY



GRAB BREAKFAST
IN OUR REFECTORY



STARBUCKS



LUNCH IN THE
RESTAURANT



ACCESS SUPPORT IN
THE HWB



EMPLOYMENT
BUREAU



GYM AND SPORTS
HALL

SELF-CARE

PAMPER



HAIR SALONS



BEAUTY SALONS



WATCH A SHOW IN
OUR MERLIN
THEATRE



New facilities are about
new beginnings and **endless possibilities**

Bob Etheridge



LEAD THE WAY

MORE ABLE & TALENTED (MAT)

All A-level students receive UCAS (University & Colleges Application Service) support. There is also targeted support via our MAT programme for high achievers and a MAT panel of senior academics has been selected to help students develop areas of excellence through specialist guidance and mentoring.

Pembrokeshire College is a member of a network of partnership hubs called the SEREN HUBS. The hubs were created to enable schools and colleges to share resources with a means to preparing more Welsh students for universities like Oxford and Cambridge. Students can benefit from:

- » Mentoring by external specialists
- » Mock interviews with an Oxbridge consultant
- » MAT bursaries
- » Attendance at Vet Med and Medlink conferences
- » SEREN network activities
- » An event for Russell Group and Oxbridge applicants at the Liberty Stadium
- » Aspirational target setting
- » Access to MIT Global Teaching Lab sessions

MAKE A DIFFERENCE

At College we encourage learners to get involved with how the College operates and to be involved in decision making. The following roles give our learners the opportunity to really make a difference:

- » Stand for Student Governor
- » Become a Learner Voice Representative
- » Become a Coleg Cymraeg Welsh Ambassador
- » Sign up to be a Student Ambassador
- » Become a Safeguardian



HOW TO APPLY

1.

Attend an Open Evening

We recommend that you attend one of our Open Evenings where you can take a tour of our facilities and speak directly to our lecturers and support teams. You can also find information on all our courses on our website: pembrokeshire.ac.uk

If you are unsure of which course is right for you, our friendly Advice and Guidance Team are always on hand as well as Careers Wales.

Check out our website for details of upcoming Open Evenings.

2.

Apply Online

Apply via our website - search for your course then apply online. You'll need to create an account which will allow you to track your application.

If you need some help completing your application, please make an appointment to see our Admissions team by calling: 0800 9 776 788

3.

Come and Meet Us

Once we have received your application you will be invited to attend one of our information events where subject lecturers will give you some more information on the course.

Finally, you will be asked to upload your results, if you have met the conditions of your offer, you will receive an email letting you know about your first day in College.



**Choose your subjects
and get ready for a
bright future**

FINE ART DRAMA & THEATRE STUDIES MEDIA STUDIES MUSIC PHOTOGRAPHY

You may be surprised to learn that the creative industries are one of the fastest growing economic sectors in the UK.

With this in mind, our creative A-levels are designed to challenge learners to explore and channel their creativity preparing them for degree level study and careers in this eclectic sector.

These programmes can be an exhilarating and fast-paced experience and will require learners to be committed to pushing boundaries and thinking outside the box. Learners will develop their emotional intelligence and learn to become self-critical. Learners will be stretched and will develop great communication and organisational skills - all skills which are valued by employers regardless of industry sector.

All our creative courses are delivered by industry professionals who have a wealth of knowledge and are practising artists, photographers and musicians.

ENTRY REQUIREMENTS

All AS students should have a minimum of five GCSEs at grades A*-C (inclusive of English Language and Mathematics). Additionally, learners will be required to have a minimum GCSE grade as indicated below:

Art - Art B (or suitable portfolio of work) and English Language/Welsh (first language) C

Drama & Theatre Studies - Drama B (or equivalent) and English Language/Welsh (first language) B

Media Studies - English Language/Welsh (first language) B

Music - Music B (or equivalent minimum Grade 5) and English Language/Welsh (first language) B

Photography - Art C (or digital portfolio of work) and English Language/Welsh (first language) C

Please check the website for each individual subject's entry criteria.

MEET THE LECTURERS

ART - FINE ART

LOUISE SHEPPARD: BEd (Hons), MA

Louise studied at Falmouth, Bath and Swansea and has worked freelance before teaching. She enjoys exploring all 2D media, especially printmaking, and teaches across the Level 3 vocational programmes in Design as well as teaching A-level Art students.

ART - FINE ART & PHOTOGRAPHY

BARBARA SIMON: BA (Hons), PGCE

Barbara studied BA(Hons) Visual Arts at Swansea and is a practising commercial photographer and artist. She works in various media such as 35mm film, pinhole photography, digital photography and silkscreen printing, combined with mixed medium painting.

DRAMA & THEATRE STUDIES

JOHNNY LOCK: BA (Hons), PGCE

Johnny trained at East 15 Acting School and worked as an actor in London for a number of years before setting up his own theatre company and relocating to Pembrokeshire.

LAURA RICHARDS: BA (Hons), PGCE

Laura studied Drama, Theatre and Media Studies in Cardiff. She has taught Drama for 10 years and has a real passion for directing after having produced many shows, including The Phantom of the Opera and The Sound of Music.

MEDIA STUDIES

EMILY CLAIRE EVANS: BA (Hons), PGCE

Emily Claire read English, Film and Media at the University of Wales Trinity Saint David's (UWTSD), graduating with joint honours in English & Media Studies. After graduating, she embarked on a career in education, she has supported and taught across various further education courses in English, Art, Design and Media related subjects. She is passionate about both critical and creative practice and is committed to empowering others to realise their potential for the benefit of themselves and the wider community.

MUSIC

STEPHEN KITE: BA (Hons), PGCE

A former Head of Music in a Comprehensive School in London, Stephen's influences in music are diverse and range from Jazz Piano to Drum and Bass. Stephen has helped forge extended projects with the Royal Opera House, English National Opera, Wigmore Hall and the Camden Roundhouse.



BIOLOGY CHEMISTRY PHYSICS

If you're curious about the world around us and want to understand how the human body works or what lies beyond our own universe then A-level science can help you to answer these questions plus many more.

Through our science A-levels you will develop skills in planning and conducting investigations, gathering information and evaluating findings. You will learn about the many roles that scientists play in our everyday lives and begin to explore where advances in science could take us in the future.

Studying science at A-level can lead to a wide variety of interesting degree courses and career opportunities. These programmes are designed to expand your mind and equip you with many transferable skills.

ENTRY REQUIREMENTS

All AS students should have a minimum of five GCSEs at grades A*-C (inclusive of English Language and Mathematics). Additionally, learners will be required to have a minimum GCSE grade as indicated below:

Biology - Biology B (plus another Science at B) or Science BB and Maths B

Chemistry - Chemistry B (plus another Science at B) or Science BB and Maths B

Physics - Physics B (plus another Science at B) or Science BB and Maths B. (Also need to study AS Mathematics)

Please check the website for each individual subject's entry criteria.

MEET THE LECTURERS

BIOLOGY

KATE BASSETT-JONES: BSc (Hons), PGCE

After graduating with a degree in Environmental Biology, including a year teaching Environmental Education in Tennessee, Kate completed her PGCE in Cardiff. She teaches A-level Biology as well as running overseas expeditions and the Duke of Edinburgh's Award for our College students.

BIOLOGY & CHEMISTRY

ANGHARAD MILES: BSc (Hons), PGCE

After graduating with a BSc (Hons) degree in Neuroscience from University College London, Angharad returned home to Pembrokeshire to pursue a career in teaching Biology, Chemistry and Mathematics.

PHYSICS

DR. HELEN MASTERS: MNatSci, MA, PhD, PGCE, CSciTeach

After completing her masters degree in Natural Sciences at the University of Cambridge, Helen worked as a research scientist in the civil service, during which time she undertook her PhD. Helen then spent several years as a scientist and manager for multinational companies before moving into teaching.

CHEMISTRY

MICHAEL DAWES: BSc (Hons), PGCE

After graduating with a degree in Biochemistry from Bristol University, Mike moved into the petrochemical industry before joining the Pembrokeshire College teaching team. Mike is also a member of our online team, teaching Chemistry to students from around the world.

BUSINESS STUDIES ECONOMICS GOVERNMENT & POLITICS LAW

Today business, economics, politics and law are 'big' business. Through the Business Studies A-level you will develop a critical understanding of business organisations, the markets they serve and the process of adding value.

In Economics you will develop an appreciation of the contribution of economics to the understanding of the wider economic and social environment through studying both micro and macro economic theories.

For Government and Politics you will need an interest in contemporary politics and the ability to critically analyse, interpret and evaluate political information as you study the importance of politics to your own life and society as a whole.

Finally, choose Law and you will gain an understanding of how the law affects every person, every day of their lives, in some form or another. You will develop an understanding of both private and public law within the law of Wales and England alongside developing an understanding of legal method and reasoning as used by lawyers and the judiciary.

ENTRY REQUIREMENTS

All AS students should have a minimum of five GCSEs at grades A*-C (inclusive of English Language and Mathematics). Additionally, learners will be required to have a minimum GCSE grade as indicated below:

Business Studies - English/Welsh (first language) B and Maths or Numeracy B

Economics - English/Welsh (first language) B and Maths or Numeracy B

Government & Politics - English/Welsh (first language) B

Law - English/Welsh (first language) B

Please check the website for each individual subject's entry criteria.



MEET THE LECTURERS

BUSINESS STUDIES

KAREN NEVILLE: BSc (Hons), PGCE

Karen studied Business at Cardiff University. After graduating, she gained over ten years experience in management and training roles before joining the Business Department at Pembrokeshire College.

ECONOMICS

HELEN STODDART: BA (Hons), MSc, PGCE

Helen studied economics and statistics at York University and Sheffield University before embarking on a career in local journalism. Helen switched to teaching over 20 years ago when she joined Pembrokeshire College where she has been part of the A-level team for over ten years.

GOVERNMENT & POLITICS

ALAN GREGORY: BMet (Hons), PGCE

Alan was born and educated in the UK. He has worked variously in the steel industry, in journalism and in education, both within the UK and overseas. He has been a teacher for the last twenty years, mostly abroad, and teaches Mathematics, Government and Politics, Computing, Science, English and Sport.

LAW

JOY SANDIFER: MSc, LLB (Hons), PGCE

Joy graduated with a law degree from Cardiff University followed by an MSc in Business Management after a successful career working with the Cardiff Chamber of Commerce. Joy has written and produced A-level revision guides and has developed Institute of Leadership and Management online courses for distance learning.

ENGLISH LANGUAGE & LITERATURE ENGLISH LITERATURE FRENCH SPANISH WELSH (2ND LANGUAGE)

There are lots of good reasons to choose to study a language as one of your A-level subjects.

Being able to speak multiple languages can have many benefits socially as well as giving you an edge in today's global business economy.

Studying a foreign language will not only enrich your global cultural awareness but can also improve your comprehension and critical thinking skills - both of which are useful for many different degree courses and are also sought after by businesses.

Choose English Literature, or Language and Literature, and you will immerse yourself in exploring the complexities and richness of the English language.

ENTRY REQUIREMENTS

All AS students should have a minimum of five GCSEs at grades A*-C (inclusive of English Language and Mathematics). Additionally, learners will be required to have a minimum GCSE grade as indicated below:

English Language & Literature - English Language & Literature B

English Literature - English Language & Literature B

French - French B and English/Welsh (first language) B

Spanish - Spanish B and English/Welsh (first language) B

Welsh (2nd Language) - Welsh B

Please check the website for each individual subject's entry criteria.

MEET THE LECTURERS

ENGLISH LANGUAGE & ENGLISH LITERATURE

CAROLINE FULLER: MA, BA (Hons), PGCE

Caroline graduated with a BA (Hons) in English and then went on to complete an MA. A keen reader and writer she enjoys sharing her passion for literature with her students.

REBECCA MCKAY: BA (Hons), PGCE

After graduating from Cardiff University, Rebecca chose to teach. She enjoys the diversity of teaching both English Literature and the combined Language and Literature A-levels, supporting the critical and creative skills of students.

FRENCH

NATHALIE REES: PGCE

Nathalie graduated with a degree in English from the University of Bordeaux III France and spent a year in Pembrokeshire as a French Assistant. She subsequently did a Masters in Teaching French as a Foreign Language in the University of Bordeaux.

SPANISH

BEATRICE FORMAGGI: BA (Hons), PGCE

Beatrice studied Foreign Languages at the University of Pisa [Italy]. She taught foreign languages in Italy for three years before moving to Wales where she has taught in secondary schools and colleges.

WELSH 2ND LANGUAGE

HANNAH SALMON: BA (Hons), PGCE

After graduating from Cardiff Metropolitan University with a degree in Educational Studies and Welsh, Hannah went on to teach GCSE and A-level Welsh as a second language in various schools before joining the College.

MATHEMATICS FURTHER MATHEMATICS

If you are naturally gifted with numbers then A-level Mathematics and Further Mathematics may be for you.

The study of Mathematics is integral to everything around us. New mathematical theories are being discovered daily and it is these theories that often form the basis of scientific discoveries and inventions.

For those with a real passion for the subject then A-level Further Mathematics will allow you to acquire an even greater level of understanding.

If you are interested in pursuing a degree in Physics, Engineering or Economics then having an A-level in Mathematics will be of real benefit.

ENTRY REQUIREMENTS

All AS students should have a minimum of five GCSEs at grades A*-C (inclusive of English Language and Mathematics). Additionally, learners will be required to have a minimum GCSE grade as indicated below:

Mathematics - Maths (From Higher Tier - intermediate with tutor agreement only) and Numeracy B

Further Mathematics - Maths and Numeracy A (also need to study AS Level Mathematics)

Please check the website for each individual subject's entry criteria.

MEET THE LECTURERS

MATHEMATICS & FURTHER MATHEMATICS

ELAINE SINCLAIR: BSc (Hons), PGCE

Elaine studied Mathematics at Birmingham University. She taught Maths in Secondary Schools before spending two years teaching at a college in Ghana with Voluntary Service Overseas. Before joining Pembrokeshire College she worked at an educational charity supporting global issues through the curriculum.

TONY ANDREWS: BSc (Hons), NPQH, PGCE

Tony graduated from the University of London, King's College with a BSc in Mathematics. He has over 36 years teaching experience and has been an examiner for GCSE and A-level for some 30 years. His roles have included Head of Mathematics, Maths Adviser for Pembrokeshire, Deputy Headteacher and Headteacher.

SARAH WILLIAMS: BSc (Hons), PGCE

Sarah graduated from the University of Essex with a BSc in Computer Science. Passionate about encouraging more women into STEM subjects, she chose to qualify as a teacher. With over 20 years teaching experience, she now specialises in teaching programming and pure mathematics.

ANGHARAD MILES: BSc (Hons), PGCE

After graduating with a degree in Neuroscience from University College London, Angharad returned home to Pembrokeshire to pursue a career in teaching Biology, Chemistry and Mathematics.

EMMA EMBERSON: BSc (Hons), PGCE

Emma studied Applied and Agricultural Zoology at the University of Leeds and spent three months in the rainforest studying biodiversity. Emma has been teaching maths and sciences for over 20 years. Her roles have included Head of Year and SEN departmental coordinator.

MARION SEATON: BEng (Hons), PGCE

Marion graduated with a BEng in Manufacturing Engineering and Management and has worked in the UK, USA and Germany. Marion has been teaching GCSE and A-level Maths for over 20 years, her favourite A-level topic is surds.



Mathematics is, in it's way, the poetry
of logical ideas

Albert Einstein



GEOGRAPHY HISTORY PHILOSOPHY, ETHICS, BELIEFS & VALUES

These humanities based subjects will give you a solid foundation of knowledge if you are looking to pursue a degree programme in one of these, or a related subject.

Study AS-level Geography and you will be encouraged to apply geographical knowledge, theory and skills to the world around us. This will enable you to develop a critical understanding of the world's people, places and environments in the 21st Century.

Choose History and you will study some of the most significant events of the past and uncover how some of these events have shaped the world in which we live today.

Finally, pick Philosophy, Ethics, Beliefs and Values and you will gain a fascinating insight into religion and its place in the wider world. You will undertake an in-depth study of one of the six major world religions as well as covering religion, ethics and the philosophy of religion.

ENTRY REQUIREMENTS

All AS students should have a minimum of five GCSEs at grades A*-C (inclusive of English Language and Mathematics). Additionally, learners will be required to have a minimum GCSE grade as indicated below:

Geography - Geography B and English/Welsh (first language) B and Maths or Numeracy B

History - History B and English/Welsh (first language) B

Philosophy, Ethics, Beliefs and Values - Religious Studies B and English/Welsh (first language) B

Please check the website for each individual subject's entry criteria.

We are not makers of history. We are made by history.

Martin Luther King, Jr

MEET THE LECTURERS

GEOGRAPHY

POWELL STRONG: MSc, PGCE

After graduating from Bangor University's School of Ocean Sciences in 1991, Powell worked as a coastal scientist, specialising in marine mammal studies but also working for a range of statutory and non-governmental organisations. Powell started lecturing at Pembrokeshire College in 1997 but maintained his links with industry. Powell has published work in the field of human geography.

HISTORY

COREY JAMES: BA (Hons), PGCE

Corey graduated from Swansea University with a BA single honours degree in History, part of this having been studied at the University of Angers in France. He has taught in secondary education in Wales and England for 2 years prior to joining the College in 2024. Corey teaches and supervises the A2 history courses at the College specialising in Tudor Britain and the American Civil War.

SARAH-KAY TUSHINGHAM-FORD: BA (Hons), PGCE

After graduating with a degree in Religious Studies, Philosophy and Humanities from Lampeter University, Sarah-Kay went into teaching in Pembrokeshire schools. Sarah-Kay has been working with WJEC for several years as an examiner for GCSE, AS and A2 level papers.

PHILOSOPHY, ETHICS, BELIEFS & VALUES

SARAH-KAY TUSHINGHAM-FORD: BA (Hons), PGCE

After graduating with a degree in Religious Studies, Philosophy and Humanities from Lampeter University, Sarah-Kay went into teaching in Pembrokeshire schools. Sarah-Kay has been working with WJEC for several years as an examiner for GCSE, AS and A2 level papers.

PHYSICAL EDUCATION COMPUTER SCIENCE

The Physical Education A-level isn't just for those who love sport. As part of this course you will learn about health, wellbeing and the human body.

This is a demanding course that will cover elements of biology, physics, sociology and psychology. Practical sessions form only a small part of this A-level programme which instead focuses on building knowledge through theory-based sessions.

To be successful on this course you will need to have a real interest in discovering the science behind sport. Successful completion of this programme can be the stepping stone to a wide variety of interesting careers including sports coaching, sports development or teaching.

Information Technology is one of the fastest growing global industries constantly expanding and evolving. This rapid growth has led to a high demand for individuals who can produce tomorrow's technologies.

Choose AS Computer Science and you will need to think creatively, innovatively, analytically, logically and critically. You will also need the ability to analyse problems in computational terms through practical experience of solving such problems, including writing programs to do so.

ENTRY REQUIREMENTS

All AS students should have a minimum of five GCSEs at grades A*-C (inclusive of English Language and Mathematics). Additionally, learners will be required to have a minimum GCSE grade as indicated below:

Physical Education - PE B or Science B (if PE not taken)

Computer Science - English/Welsh (first language) B and Maths or Numeracy B

Please check the website for each individual subject's entry criteria.

MEET THE LECTURERS

PHYSICAL EDUCATION

CLAIR OWEN: BEd (Hons), PGCE

Clair qualified as a Physical Education Specialist in 1995 at Trinity College Carmarthen. She is actively involved in coaching and performing in a number of sports to international level. Clair believes that given the right motivation everyone can reach their potential.

COMPUTER SCIENCE

IAN LEWIS: MSc, BSc (Hons), PGCE

With a background working in the engineering industry, Ian graduated from Glamorgan University with a degree in Information Technology and has recently completed a Master's Degree in Cyber Security. He has been lecturing at Pembrokeshire College for over 15 years, is Programme Leader for the HND Applied Computing course and is a qualified ESTYN Peer Inspector.

SARAH WILLIAMS: BSc (Hons), PGCE

Sarah graduated from the University of Essex with a BSc in Computer Science. Passionate about encouraging more women into STEM subjects, she chose to qualify as a teacher. With over 20 years teaching experience, she now specialises in teaching programming and pure mathematics.

GILLIAN HESSE: BSc (Hons), MSc, PhD, PGCE

Gillian graduated from Bristol University with a BSc in Computer Science and then worked in industry for several years. She then returned to academia, gaining an MSc and PhD in Cognitive Science and holding several research positions. After several years abroad, Gillian became a Computer Science teacher, teaching all aspects of IT and Computer Science to learners aged 11-18 including GCSE, BTEC and A-level.



The mind is not a vessel to be filled, but a fire to be kindled

Plutarch

MEET THE LECTURERS

PSYCHOLOGY SOCIOLOGY

Both Psychology and Sociology are fascinating subjects which are interested in the scientific study of people. Whilst these subjects often go hand-in-hand there are significant differences between them.

Study the A-level in Psychology and you will develop skills in psychological research, information technology, communication and critical thinking.

Choose to study Sociology and you will delve into a broad range of interesting topics including social exclusion, poverty, crime, religion and much more.

These diverse and fascinating subjects deal with how we perceive the everyday world and will help you to develop a greater understanding of human emotions, relationships and behaviours.

ENTRY REQUIREMENTS

All AS students should have a minimum of five GCSEs at grades A*-C (inclusive of English Language and Mathematics). Additionally, learners will be required to have a minimum GCSE grade as indicated below:

Psychology - English/Welsh (first language) B and Maths or Numeracy B

Sociology - English/Welsh (first language) B

Please check the website for each individual subject's entry criteria.

PSYCHOLOGY

CHARLIE ALEXANDER: BA (Hons), PGCE

Charlie studied Psychology and Education at Cardiff University. She has been teaching Psychology at the College for over 10 years.

SARAH ARCHER: BSc (Hons), PGCE

Sarah studied Applied Psychology at UWTSU. Alongside her studies she worked at Magstim, pioneers of Transcranial Magnetic Stimulation (TMS). After her degree she worked for Hywel Dda University Health Board Mental Health department based at St. David's hospital in Carmarthen before moving into teaching.

SOCIOLOGY

CHRIS URACK: MA, BSc (Hons), PGCE

Chris graduated from SOAS University of London (the School of Oriental and African Studies). Before working at the College Chris worked for Global Connections, an educational charity that raised awareness about global issues in west Wales. He is originally from Australia and has travelled extensively and worked in different countries all over the world.

LOGAN HUGHES: BSc (Hons), MSc, PGCE

Logan graduated with a BSc (Hons) in Sport and Physical Education at Cardiff Metropolitan University focusing on ethics and sociology in sport. He then studied an MSc in Sociology and Ethics of Sport undertaking research into the sociological culture in sport and masculinity.

ADVANCED SKILLS BACCALAUREATE WALES

This course aims to enable learners to develop and demonstrate an understanding and proficiency in essential and employability skills. The emphasis is on applied and purposeful learning and to provide opportunities for assessment in a range of real-life contexts through three projects.

The Advanced Skills Baccalaureate Wales is normally studied alongside at least 3 A-levels or an equivalent Level 3 qualification for example an Extended Diploma.

It is equivalent to one A-level and graded A*–E. All Welsh Universities will include this qualification in their offers. Most other universities also accept the Advanced Skills Baccalaureate Wales. Even the most competitive courses such as Medicine, Dentistry and Veterinary Science will accept it as an alternative to an A-level grade.

ENTRY REQUIREMENTS

All AS students should have a minimum of five GCSEs at grades A*–C (inclusive of English Language and Mathematics).

Please check the website for each individual subject's entry criteria.

MEET THE LECTURERS

ADVANCED SKILLS BACCALAUREATE WALES

SUSANN BARRACLOUGH: MSc, QTS

Susann has a sound background in pedagogics and psychology alongside the methodology of English language teaching. She acquired her Masters Degree in Pedagogics specialising in the delivery of English as a Foreign Language (EFL) as well as History at secondary level at Leipzig University, Germany. Susann is a passionate teacher of English and has worked in education for over 16 years including secondary schools, FE colleges and community centres, both in the UK and Germany.

KAREN NEVILLE: BSc (Hons), PGCE

Karen studied Business at Cardiff University. After graduating, she gained over ten years experience in management and training roles before joining the Business Department at Pembrokeshire College.

JOY SANDIFER: MSc, LLB (Hons), PGCE

Joy graduated with a law degree from Cardiff University followed by an MSc in Business Management after a successful career working with the Cardiff Chamber of Commerce. Joy has written and produced A-level revision guides and has developed Institute of Leadership and Management online courses for distance learning.

SAY HELLO!



pembrokeshire.ac.uk | 0800 9 776 788 | admissions@pembrokeshire.ac.uk

Disclaimer

The College takes all reasonable steps to provide the educational services and courses as described in this prospectus. Details are correct at the time of going to press but may be subject to change without prior notice. Courses will not run if learner numbers are insufficient. The College has the right to refuse individuals entry to courses in certain circumstances. Prospective learners may be advised of more suitable alternatives, if appropriate.