



COLEG Sir Benfro
Pembrokeshire COLLEGE

School Leaver Guide to Courses & Careers

2025-2026



CHOOSE YOUR VISION

ThinkMORE. LearnMORE. BeMORE.

COME AND SEE FOR YOURSELF

OPEN EVENINGS

Come along to one of our open evenings to see our facilities and explore the range of courses on offer:

07 January 2025 - A-levels
14 January 2025 - All courses
28 April 2025 - All courses

COLLEGE TOURS

If you miss our open evenings, or want to look around when it's a little quieter, just contact our Admissions team to book a tour:
admissions@pembrokeshire.ac.uk
0800 9 776 788

TASTER & EXPERIENCE DAYS

Keep an eye on our website and social media for details of tasters and experience days during terms 2 and 3.

TRANSITION DAY

Everyone who has applied for a full-time course will be invited to attend a Transition Day on 02 July 2025.

HI | HELLO | SHWMAE | HEY | HOLA

WELCOME

YOUR JOURNEY STARTS HERE...

At Pembrokeshire College, the sky's the limit!

Whatever your passion, we're here to ensure you receive an exceptional learning experience that sets you up for success.

Whether you dream of mastering professional cookery, or diving deep into the world of mechanical engineering, you'll get to focus on a subject that really excites you.

With state-of-the-art facilities and tutors who bring real industry experience to the classroom, we're committed to unlocking your potential and arming you with the skills and expertise you will need to advance to further study or to jumpstart your career.

When you choose Pembrokeshire College, you're not just another learner – you're treated like an adult ready to make your mark. We'll provide top-tier teaching, unwavering support, and expert guidance to help you thrive. All we ask in return is that you bring your best self: aim for 100% attendance, stay committed to your course, and seize every opportunity we put in front of you.

I can't wait to welcome you to Pembrokeshire College, where your future begins!



Dr Barry Walters
Principal



MAE'R LLYFRYN HWN AR GAEL YN GYMRAEG.
THIS BOOKLET IS AVAILABLE IN WELSH.

The more that
you read, the
more things
you will know,
the more that
you learn, the
more places
you'll go.

Dr. Seuss

WHY CHOOSE COLLEGE?

DID YOU KNOW?
In September 2023 over
200 Level 3 learners
progressed to university
from A-level and Extended
Diploma Programmes

COURSES FROM PRE-ENTRY TO LEVEL 3

100+ FULL-TIME COURSES

26 A-LEVEL SUBJECTS

20+ APPRENTICESHIP PATHWAYS

STATE-OF-THE-ART FACILITIES

Some of the best learning resources and facilities in Wales.

EXTENSIVE TRANSPORT NETWORK

Our transport network runs the length and breadth of the county making it easy for you to get to College.

WORK EXPERIENCE

To get you ready for the workplace you'll undertake work experience placements or work on real world briefs.

EXCEPTIONAL SUPPORT

All learners have access to a comprehensive range of support services.

EMPLOYER LINKS

We have links with hundreds of local employers across a multitude of industry sectors to ensure our courses teach the skills employers are looking for.

REFECTORY, STARBUCKS & LITTLE FRESH
Whatever time you take your breaks you'll always find somewhere to grab a drink or a snack to fuel your learning!

THE HWB & THE HAVEN
The Hwb and the Haven are two dedicated study spaces for individual, group or supported study. The library also offers a silent study space along with a variety of books and journals to support your studies. You can also borrow a laptop, on production of an ID card, to continue with your homework or assignments whilst in College.

HEALTHY BODY | HEALTHY MIND
Your health and wellbeing is super important. You can join one of our Sports Academies or take advantage of discounted learner membership in the gym - great for when you need to let off steam between classes.

CHOOSE YOUR PATHWAY



Scan the code to visit
pembroke.ac.uk

A-LEVELS

If you like researching topics, reading about subjects to broaden your knowledge and are good at exams, then A-levels may be the route for you.

Choose to study A-levels at the College and you can choose from 26 AS subjects - the broadest range in the county. If you are interested in studying A-levels, see our A-level brochure to find out more.

CHOOSE A-LEVELS IF:

- You're academically focussed and enjoy classroom based learning
- You're not fazed by exams
- You want to keep your future career options open
- You want to progress to university

VOCATIONAL COURSES

Our vocational courses offer nationally recognised qualifications that equip you for employment in a specific sector. Our Level 3 Extended Diplomas are equivalent to A-levels and allow you to progress to university.

For many subjects, you will be taught in learning environments that replicate those you will find in industry by lecturers who have years of experience within the sector.

CHOOSE A VOCATIONAL COURSE IF:

- You're looking for work skills to enter a particular industry, such as healthcare or construction
- You learn best by getting hands-on
- You want to progress to the workplace or university

APPRENTICESHIPS

This is a work-based learning programme that allows you to earn a wage whilst studying for a qualification and learning practical skills in the workplace. To undertake an apprenticeship you need to find an employer who is willing to support you throughout the qualification. If you do not have an employer we may be able to help you find one.

All apprenticeship programmes include qualifications in literacy and numeracy unless you have already obtained them at school.

CHOOSE AN APPRENTICESHIP IF:

- You already know what job you want to do
- You prefer to learn in the workplace rather than the classroom
- You want a professional qualification to support your work experience
- You want to earn while you learn

PROGRESSION KEY:



Employment | University | Apprenticeship

WE OFFER A HUGE RANGE OF COURSES
AT VARYING LEVELS. THE LEVEL YOU
STUDY WILL DEPEND ON YOUR PREVIOUS
ACHIEVEMENTS AND QUALIFICATIONS

COURSE LEVELS EXPLAINED

On the following pages you will find a brief overview of the courses that we offer, the job roles that they could lead to and average salaries. Visit our website: pembrokeshire.ac.uk for full course information including the modules studied and entry requirements. If you're not sure which course would be most suitable for you, call our friendly Admissions team on 0800 9 776 788 for some impartial advice and guidance.



Scan the code to visit
pembrokeshire.ac.uk

CHOOSE YOUR LEVEL

ENTRY & LEVEL 1

Our Entry Level and Level 1 courses are suitable for you if you don't have any formal qualifications. If you don't get the GCSE grades you had hoped for, then you can start at Entry Level and work your way up.

Some practical courses require learners to start at Level 1 or Level 2, regardless of their GCSE grades. This is so you can learn the basic skills before progressing to higher levels or an Apprenticeship.

LEVEL 2

Most of our Level 2 courses require you to have GCSE grades at grade D and some even require you to have achieved C grades in certain subjects. Entry requirements for each course vary so make sure to check the website before applying.

After successfully completing your Level 2 programme you could progress onto a Level 3 course, employment or an Apprenticeship.

LEVEL 3

If you achieve five GCSEs at grade C or above (some courses may require you to have achieved B grades in certain subjects) you can go straight in at Level 3: A-levels or an Extended Diploma (Extended Diplomas are equivalent to studying three A-level subjects and are comparable in terms of UCAS points).

All Level 3 programmes are two years in length. On successful completion you can apply to study at university, go directly into employment or apply for an Apprenticeship.



HOW TO APPLY

1.

ATTEND AN OPEN EVENING

We recommend that you attend one of our Open Evenings where you can take a tour of our facilities and speak directly to our lecturers and support teams. You can also find information on all our courses on our website: pembrokeshire.ac.uk

If you are unsure of which course is right for you, our friendly Advice and Guidance Team are always on hand as well as Careers Wales.

Check out our website for details of upcoming Open Evenings.

2.

APPLY ONLINE

Apply via our website - search for your course then apply online. You'll need to create an account which will allow you to track your application.

If you need some help completing your application, please make an appointment to see our Admissions team by calling: 0800 9 776 788

3.

COME AND MEET US

Once we have received your application you will be invited to attend one of our information events where subject lecturers will give you some more information on the course.

Finally, you will be asked to upload your results, if you have met the conditions of your offer, you will receive an email letting you know about your first day in College.

TRANSITION & SUPPORT

At Pembrokeshire College we provide an inclusive learning environment offering support to all learners.

KEEPING LEARNERS ON TRACK

Each learner is assigned to a Personal Tutor to ensure that they receive a consistent and appropriate level of support, advice and guidance. This can be in group sessions or on an individual basis. All learners agree to 100% attendance and sign a learner agreement at the start of the course which includes the College's expectations of positive behaviour, full attendance and satisfactory completion of work.

AN INCLUSIVE ENVIRONMENT

The College is committed to providing an inclusive and safe environment for all learners. We offer advice and support on all aspects of equality, diversity and inclusion. We provide access to a wide range of assistive technologies and equipment, also physical resources and equipment. We undertake Personal Emergency Evacuation Plans and Risk Assessments and ensure that our campus is accessible for all learners.

ADDITIONAL LEARNING PROVISION

The College adopts a highly inclusive and integrated approach to supporting learners with additional learning needs, which starts while they are in school. Comprehensive transition planning arrangements are in place and are undertaken in partnership with a wide range of specialist agencies, including a specialist Careers Wales Adviser.

The College's Learning Support team work closely with ALNCo's in schools. These members of staff attend school reviews, meet learners and parents or carers at the school, interviews or open events, and meet learners on their transition days. Strong transition arrangements exist between the secondary schools and the College to make transition as smooth as possible.

The College offers a wide range of person-centred Additional Learning Provision, including for example 1:1 or shared LSA, supervision during lunchtimes or breaks, support to and from assistive transport, and personal care. Learning Support is provided by over forty experienced Learning Support Assistants.

SPECIALIST ASSESSOR

A Specialist Assessor will undertake exam access arrangements, dyslexia profiling and screening to determine the nature and level of support needed.

SAFEGUARDING & WELLBEING

The College takes safeguarding and wellbeing very seriously and has an established team which includes: Designated Senior Person, Safeguarding and Wellbeing Officers, Student Nurse, Finance Officer and an Interdenominational Chaplain. The team also work alongside external agencies to provide referrals, advice, guidance and support.

LOOKED AFTER YOUNG PEOPLE (LAYP) & YOUNG CARERS

The College's Senior Designated Person is responsible for providing transition, care and support services for LAYP and young carers. If you are in care, a care leaver or a young carer please contact: safe@pembrokeshire.ac.uk for advice and support.

KEYS TO SUCCESS: ENGLISH, MATHS & WELSH

CRITICAL SKILLS: MATHS AND ENGLISH

Whether you are looking to go straight into employment or progress to higher level study, English and Maths are viewed by employers and universities as critical skills to have.

Whatever your programme of study, our lecturers and learning support staff are committed to helping you to improve your reading, writing, communication and mathematics skills so you can leave College with the skills you'll need to progress.

IMPROVING YOUR WELSH

All College learners are encouraged to have an appreciation of Welsh language and culture. Learners who have previously completed any learning through the medium of Welsh will be encouraged and supported to maintain and develop those skills.

All learners can access tutorials, essential skills and aspects of their course through the medium of Welsh if they wish to do so.

HELPING YOU TO **REACH** YOUR **GOALS**

ONSITE SUPPORT FACILITIES INCLUDE:



Careers



College
Nurse



Communication
Support
Workers



Counsellors



Wellbeing
HWB



Student
Finance



Learning
Coaches



Learning
Support
Assistants



Safeguarding,
Wellbeing &
Disciplinary
Officers



Skills Support
Advisors



Equality, Diversity &
Inclusion
Support



Pastoral
Coaches



UCAS
Seren Hub



Work Placement
Officer



Safeguardians



Youth Worker

ENRICHMENT GET INVOLVED

We offer our learners a range of enrichment opportunities which run alongside the academic timetable. These activities are supported by visiting experts, staff and volunteers and are open to ALL College learners.

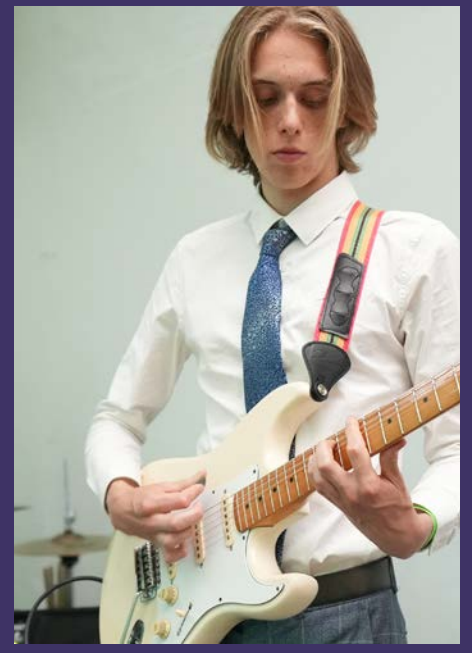
There are also enrichment opportunities such as crafts and games most days in the Atrium.

Participating in enrichment activities will support not only your mental health and wellbeing, but will also help you to make new friends, and provide you with opportunities to learn new skills and most importantly have fun.

Enrichment clubs and societies include:

- Sports Academies and Fitness Activities
- Arts and Crafts
- Pride Group
- Debate Club
- Board and Card Games
- Mental Health Support Groups
- Dungeons & Dragons
- Clwb Cymraeg
- Duke of Edinburgh
- Gaming Group
- Safe Space
- Croeso Club
- Mock Trials
- Peripatetic Music Lessons
- County Orchestra







GET UNIVERSITY READY

Pembrokeshire College has established a strong reputation for preparing learners for entry to universities both in the UK and overseas.

We specialise in preparing learners for their university interviews and equipping them with the knowledge to follow their chosen degree pathway.

We have extensive experience in helping learners to gain acceptance onto the following disciplines:

Business | Medicine | Dentistry
Economics | Engineering | Finance
Law | Maths | Midwifery | Optometry
Veterinary Science

University destinations over the past three years include:

- University of Oxford
- University of Cambridge
- University of Bristol
- University of Leeds
- University of Liverpool
- University of Exeter
- Cardiff University
- University of Bath



CHOOSE COLLEGE TO GET UNIVERSITY READY

Supporting You for Your Next Steps

QUALIFIED TEACHING STAFF

Our teaching staff have specialist academic post-16 qualifications and real industry expertise. This combination ensures that you receive high quality teaching that is both engaging and stimulating, guaranteeing you the best possible start.

VESPA: A-LEVEL MINDSET

A-level Learners will attend tutorials and seminars based on the A-level Mindset. This will help learners to identify the skills required for successful A-level study. Learners who demonstrate the five elements of VESPA: Vision, Effort, Systems, Practice and Attitude are proven to be more successful.

MORE ABLE & TALENTED (MAT)

All learners receive UCAS support. There is also targeted support via our MAT programme for high achievers and a MAT panel of senior academics have been selected to help learners develop areas of excellence through specialist guidance and mentoring.

SUPPORT

Pastoral Coaches are assigned to learners and all learners receive tutorial support. The tutorial programme ensures all learners receive a consistent and appropriate level of support, advice and guidance. This is on both a group and an individual basis.

Whatever you choose for a career path, remember the struggles along the way are only meant to shape you for your purpose.

**Chadwick
Boseman**

ON AIR



GET **INDUSTRY**
READY



CHOOSE COLLEGE TO GET INDUSTRY READY

—— Top Employment Sectors in Pembrokeshire ——

AGRICULTURE

Pembrokeshire benefits from some of the best quality agricultural land in Wales and provides opportunities for those looking to pursue a career in agriculture and related industries.

CONSTRUCTION

Construction trades provide a key source of employment in Pembrokeshire with over 740 companies in the sector.

ENERGY

This is one of the largest and most rapidly expanding sectors in Pembrokeshire's economy it includes oil refining, gas processing, power generation and renewable energy.

HEALTH & SOCIAL CARE

The healthcare sector in Pembrokeshire continues to expand and provides an extensive range of career opportunities. The NHS is one of the county's largest employers.

HOSPITALITY & TOURISM

A traditional sector in Pembrokeshire, tourism-related employment is almost twice as important locally as it is in Wales overall.

WHOLESALE & RETAIL

Approximately 694 companies operate in this sector providing a varied range of career opportunities from junior to senior management level.

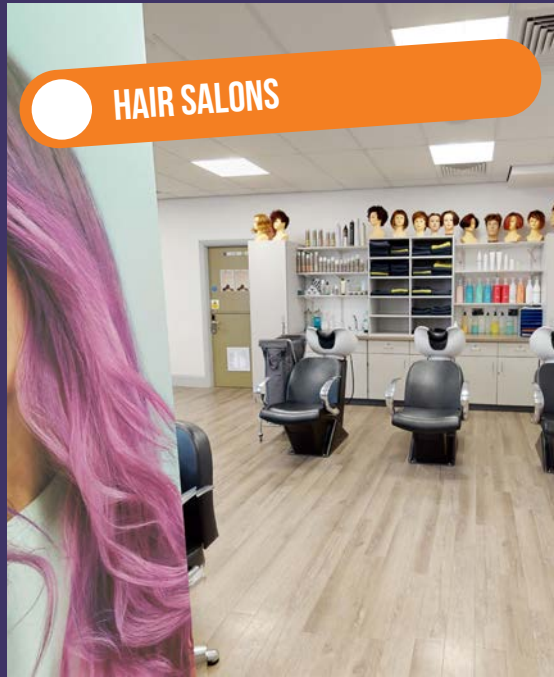
I am an artist,
and I have
the ability and
the free will to
choose the way
the world will
envision me.

Lady Gaga

HERE ARE JUST A FEW OF OUR AMAZING FACILITIES DESIGNED
TO GET YOU INDUSTRY READY...



SHELL CONTROL ROOM



HAIR SALONS



BEAUTY SALONS



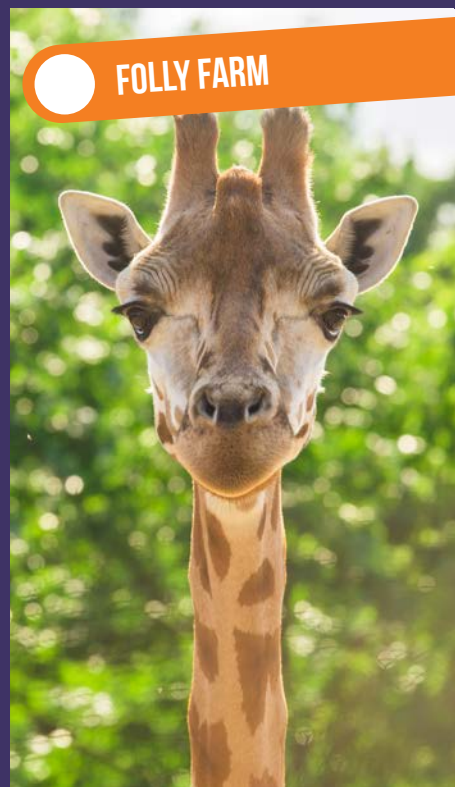
COMMERCIAL KITCHENS



CONSTRUCTION WORKSHOPS



WELDING WORKSHOPS



FOLLY FARM

GET **INDUSTRY** READY
IN **INDUSTRY STANDARD**
FACILITIES

GET **INDUSTRY** READY WITH OUR **DESTINATION** PROGRAMMES

Our Destination Programmes are now running in a growing number of curriculum areas and are designed to complement curriculum delivery.

The sector specific programmes benefit both those learners looking to progress directly into employment on completion of their course as well as those looking to progress to university.

They are designed, with the input of employers, to raise awareness of current industry needs and to highlight both current and future career pathways.

Most Destination Programmes consist of a combination of master classes, guest speakers, industry and university visits.

Many then culminate in an extended project in year two, to develop research skills and increase knowledge.

WE CURRENTLY OFFER DESTINATION PROGRAMMES IN:

- Animal Care
- Arts
- Business
- Construction
- Hospitality
- Health
- Renewables
- Tourism



I joined this course because ever since I was little I have always found that animals are drawn to me. I like the practical element of this course because I find it therapeutic and calming. I am hoping to join the police after this course and become a dog handler.

Lyra, Level 3 Animal Management



Scan the code to visit
pembrokeshire.ac.uk



GET INDUSTRY READY

PREPARING YOU FOR YOUR DREAM CAREER

Employers are looking for more than just qualifications. They want individuals who can work as part of a team, have great communication skills, are enthusiastic, have a positive attitude and are willing to learn the skills their employer needs to make their business grow.

STAND OUT FROM THE CROWD

All learners are able to access The Bureau. The Bureau is open daily and the friendly staff will help you to create a CV and search for job vacancies as well as helping you to prepare for interviews.

MAKING YOU JOB READY

We frequently work alongside local employers to ensure we are equipping you with the skills they are looking for. The involvement of employers varies from course to course but can include:



Working alongside guest chefs in our commercial kitchens.



Undertaking work placements in the NHS.



Work experience at Folly Farm, Manor House Park and many more.



Guest talks from the RAF, Army, Royal Navy and Chiltern Academy.



Work experience in a wide variety of childcare and healthcare settings.



Working with companies in the oil, gas, renewable energy and mechanical engineering sectors.

LINKING YOU WITH EMPLOYERS

Our links with employers mean you get real insight into the various career opportunities available to you. Employers we work with include:

Allt yr Afon
Altrad
Blue Gem Wind
Bluestone
Bombora Energy
British Armed Forces
Burns Nutrition
Carreg Construction
Ceredigion County Council
DP Energy
Dragon LNG
Dyfed Powys Police
EDF Energy
Elliot's Hill
Folly Farm
GGT Thomas
Grove of Narberth
Heatherton
Hywel Dda University Health Board
Insite Technical
Jenkins & Davies
Mainstay Marine
Manor Park
Ore Catapult
Park House Care
Pembrokeshire Coast National Park
Pembrokeshire County Council
Pembrokeshire Road Safety Team
Retreats Group
Rhyal Engineering
Slebech Park
St Davids Assemblies
St Davids Care in the Community
St Brides Spa Hotel
The Crown Estate
The Port of Milford Haven
Totally Welsh
United Aerospace
Valero
Williams Shipping



FUTURE CAREERS

— Get Ready for the Future —

Whilst there are many existing careers that we will likely continue to need long into the future such as chefs, engineers, sports people, nurses and police officers, many of the careers that you will go on to pursue don't even exist yet, here are a few that are on the horizon:

AI BUSINESS MANAGER

AI cannot sell itself. This role will be in charge of promoting and selling AI to new and existing companies.

CLIMATE CHANGE REVERSAL SPECIALIST

A new breed of engineer/scientist will emerge with the ability to rebuild ecosystems around the planet, such as rainforests and ocean beds.

HEAD OF MACHINE PERSONALITY DESIGN

Automation is working to create robots that have the same personality and taste as the customer.

SELF-DRIVING CAR MECHANIC

Whilst self-driving cars are already on the horizon, they will still require mechanics in order to fix them.

SPACE JUNK RECYCLER

These people will identify the orbital locations where junk is greatest. They will then develop cost effective methods to remove it from orbit.

SPACE MINER

Fossil fuels and other rare elements are running out and will eventually cease to exist on our planet. Space miners could retrieve rare Earth elements from the Moon or asteroids.

SPACE TOURISM GUIDE

Voyages into space are beginning to take off with the appearance of Virgin Galactic. Commercial flights to space will become the next top holiday destination.

VERTICAL FARMER

Farmers will use technology to carefully raise engineered crops and grow crops vertically to maximise urban spaces.

VIRTUAL IDENTITY DEFENDER

With advancements in AI the risk of fake documents increases. This role will create digital watermarks that can be authenticated to prove the truth.



Reuben, Enhanced Engineering to Motorsport Engineering at Oxford Brookes University



Amy, Construction Management to The Welsh School of Architecture in Cardiff



Anya, Applied Science to Veterinary Medicine at University of Central Lancashire



Morgan, Life Skills Academy to full-time employment in Housekeeping at Bluestone

Caitlin, Level 3 Art & Design to Master of Fine Arts and Contemporary Artist



Oliver, A-levels to Degree Apprenticeship with Rolls-Royce

OUR AMAZING ALUMNI WHERE ARE THEY NOW?



Aaron, Mechanical Engineering to Degree Apprenticeship as Design Engineer with Belcan



Ruby, Health & Social Care to Adult Nursing at Cardiff University



Bethany, Level 3 Health & Social Care to working with the Youth Services at Pembrokeshire County Council

Connor, Level 3 Hairdressing to Spa Manager at One Spa World



Eirian, A-levels to Flight School at Skyborne

#GET INDUSTRY READY



PROGRESSION:

After successfully completing a Jobs Growth Wales+ pathway, learners can progress to higher level further education programmes, apprenticeships or employment.

JOBS GROWTH WALES+

COURSES

You can choose from a variety of subject areas including:

Business, Leisure & Tourism | Engineering & Automotive
Beauty, Hair, Arts, Child & Health Care | Information Technology

GET A TASTE OF YOUR FUTURE CAREER

Jobs Growth Wales+ is a flexible programme focused on helping young people aged 16-19 who are disengaged from learning to reach their full potential and take their first steps into the world of work.

Our programmes aim to give you the skills, qualifications and work experience needed to either get a job or progress to further learning such as a higher level course or an apprenticeship.

This programme offers a totally different learning environment and is delivered by a friendly and experienced team who are committed to seeing you succeed.

Contact our admissions team for more information:
admissions@pembrokeshire.ac.uk
0800 9 776 788

EARN WHILE YOU LEARN

Whilst you're on a JGW+ programme you will get paid to train. If you attend the full 21 hours per week you will get paid £42 a week plus meal allowance.

TAILORED SUPPORT

You'll have a mentor to support you whilst you're on the programme.

GAIN REAL SKILLS

As part of all our JGW+ pathways you will gain real skills that employers are looking for increasing your employability.



Llywodraeth Cymru
Welsh Government

The Jobs Growth Wales+ programme is led by the Welsh Government.



I have greatly appreciated the educational opportunities I have experienced in Wales and they will allow me to repay the welcome I have received by contributing to the economic growth of the area through my role as an engineer in a local manufacturing company.

Haidar, Foundation Apprentice

APPRENTICESHIPS

COURSES

Automotive - Level 2, 3
Business Administration - Level 2, 3, 4
Childcare & Playwork - Level 2, 3, 4, 5
Construction: bricklaying, carpentry, electrical, joinery or plumbing - Level 3
Construction Technical - Level 3
Customer Service - Level 2, 3, 4
Engineering (various pathways) - Level 2, 3
Health & Social Care - Level 2, 3, 4, 5
ILM Management - Level 2, 3, 4, 5
Teaching, Learning & Development - Level 2, 3

EARN AND LEARN WITH AN APPRENTICESHIP

Apprenticeships are available in a growing number of sectors and allow you to earn a wage whilst continuing your education.

As part of an Apprenticeship you will learn on and off the job undertaking a structured programme of training which will lead to a recognised apprenticeship qualification.

On the job training - you will be employed by a company and work alongside more experienced members of staff to learn your trade.

Off the job training - we have a variety of delivery models and some apprenticeships will require you to attend College one day a week to learn the theory. You will also be expected to complete online assessments and assessments in the workplace.

APPRENTICESHIP FACTS:

92% of apprentices in work felt that their apprenticeship had a positive impact on their career.

92% of apprentices said their career prospects had improved.

90% of apprentices remain employed after completing their apprenticeship.

Higher Apprentices could earn £150K more on average over their lifetime compared to those with Level 3 vocational qualifications.

NEED TO KNOW:

To undertake an apprenticeship you will need to be in full-time employment with a business that can support you. The Apprenticeship Matching Service or The Bureau at the College may be able to help find you an employer.



A-LEVELS

26 SUBJECTS

Biology
 Business Studies
 Chemistry
 Computer Science
 Drama & Theatre Studies
 Economics
 English Language & Literature
 English Literature
 Fine Art
 French
 Further Mathematics
 Geography
 Government & Politics
 History
 Law
 Mathematics
 Media Studies
 Music
 Photography
 Physical Education
 Philosophy, Ethics, Beliefs & Values
 Physics
 Psychology
 Sociology
 Spanish
 Welsh - Second Language

plus: Advanced Skills Baccalaureate Wales

OPEN UP A WORLD OF OPPORTUNITY

At Pembrokeshire College, we employ qualified teaching staff who have specialist academic post-16 qualifications and real industry expertise. This combination ensures that you receive high quality provision that is both engaging and stimulating, guaranteeing you the best possible start at an advanced level.

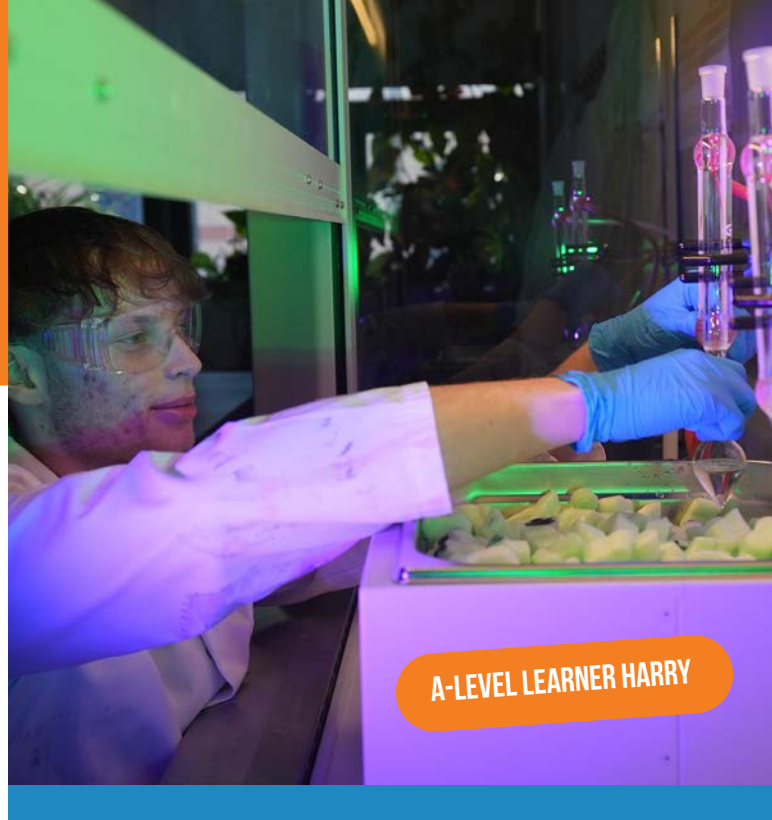
DESTINATIONS

We are so proud of the phenomenal destinations of our A-Level learners. We celebrate consistent Oxbridge success, top university places and apprenticeship routes.



Studying A-levels in Maths, Chemistry, and Business has been a fantastic experience! I've made great new friends, the support from the A-level team is amazing, and the facilities are incredible. After college, I'm excited to study Chemical Engineering at Swansea University.

Harry, A-levels



UNIVERSITY DESTINATIONS:

- University of Oxford
- University of Cambridge
- University of Bristol
- University of Warwick
- University of Leeds
- University of Liverpool
- University of Exeter
- Cardiff University
- Durham University

THE A-LEVEL PROGRAMME

There are two routes that our A-level learners can choose from:

- Route 1: 3 A-level subjects and the Advanced Skills Baccalaureate Wales
- Route 2: 4 A-level subjects and an optional Extended Project Qualification (EPQ) (must have 6+ A* at GCSE)

In addition to your academic study, every A-level learner attends a weekly group tutorial and 1:1 appointments with their dedicated Pastoral Coach.

Our four-day weekly timetable combines the county's widest choice of A-levels with protected time for sports academies, and other enrichment opportunities, plus an independent study day without any loss to curriculum time.

FACILITIES

On A-levels, you will have access to industry-standard facilities. We have purpose-built laboratories, IT/MAC suites, the Merlin Theatre, creative studios and modern classrooms. With lots of study and social spaces to choose from, your time on campus can be both purposeful and enjoyable.

ANIMAL MANAGEMENT & AGRICULTURE

ANIMAL MANAGEMENT LEARNER CAMERON

COURSES

Land-based Studies (Animal Care) - Level 1
Agriculture - Level 2
Animal Care - Level 2
Animal Management - Level 3

PROGRESSION:



BACK TO NATURE

Choose Animal Management and you will have the opportunity to develop hands-on skills by working with a range of small and large mammals, birds and reptiles at our centres at Withybush and Folly Farm. You may also be able to undertake work placements to further enhance your knowledge of domestic, exotic and wild animals.

Choose Agriculture and you will find yourself out and about throughout Pembrokeshire utilising the environment around us to develop skills in conservation and countryside management. You will learn to operate a tractor, work in the great outdoors alongside Willhome Farm, help maintain nature reserves and learn tool skills. This is great for those who love to be outside!

FACILITIES

As a Level 1 or 2 Animal Care learner you will have access to fully equipped animal care facilities at the John Burns Centre for Learning, our dedicated centre in Withybush, where you will gain a broad range of experience handling and caring for a range of small mammals, birds and reptiles.

Our Level 3 Animal Management learners will be based at Folly Farm and have unique access to work alongside the keepers for practical skill development with their wide range of animals.

FUTURE CAREERS:

- Animal Retail Worker
- Animal Behaviourist
- Animal Health Care Assistant
- Animal Keeper
- Animal Breeder
- Conservationist
- Park Ranger
- Veterinary Nurse
- Wildlife Park Manager
- Zoologist

AVERAGE SALARY RANGE:
£19,000 - £60,000

I chose the Animal Management course as I've always enjoyed working with different kinds of animals. I intend to become a zookeeper in the future.

Cameron, Level 3 Animal Management





AVERAGE SALARY RANGE:
£23,000 - £52,000

APPLIED SCIENCE

COURSES

Applied Science - Level 3

FACILITIES

You will have access to state-of-the-art facilities with purpose-built science laboratories and modern classrooms. You will work closely with our science laboratory technicians to plan and conduct practical experiments and will be able to utilise a range of scientific kit to develop your practical skills.

APPLIED SCIENCE

This course provides an opportunity to study all three disciplines of science; Biology, Chemistry and Physics, in a practical way. Units delivered include Genetics and Genetic Engineering, Microbiology, Applications of Organic Chemistry, Forensic Evidence, Collection and Analysis, Astronomy and Space Science and Medical Physics Applications.

Our qualified teaching staff, who have specialist knowledge of their areas of science, will run stimulating theory sessions and engage you in hands-on practical sessions.

I really enjoy the Applied Science course, especially having control over individual projects. For mine, I focused on chromatography and food dyes. After this course, I'm excited to go to university to study environmental health.

Leah
Applied Science



OPTIONAL FOOD SCIENCE

On this optional course you will discover the science of food and understand the value of nutrition in our diets. You will learn how food science and nutrition helps us to understand and study the fascinating world of food, understand the food supply chain, and learn about new technologies in food and food production. You will also learn about the importance of micro and macro nutrients and explore what happens to food whilst it's in your body.

This course is studied alongside a diploma in Applied Science.

FUTURE CAREERS:

- Biomedical Engineer
- Chemical Engineer
- Flavour Chemist
- Food Scientist
- Forensic Scientist
- Laboratory Technician
- Nuclear Engineer
- Oceanographer
- Research Scientist
- Sensory Technician
- Technologist
- Technical Brewer
- Veterinary Science

PROGRESSION:



PROGRESSION:



ARTS: CREATIVE & PERFORMANCE

MUSIC LEARNER OLIVE

COURSES

Art, Design & Media - Level 1
Art & Design - Level 2
Art & Design - Level 3
Foundation Art & Design - Level 3/4

Creative Media Production - Level 3
Music Performance & Production - Level 3
Performance & Production Arts - Level 3

EXPRESS YOURSELF

As part of your course you will create a portfolio of work to set you on the path either to further study or into employment.

These courses combine practical work, theory and work related projects to give you the expertise needed to succeed in these industries. All our lecturing staff have real industry experience and are professional creative practitioners.

Through events, exhibitions, end of year performances and real live briefs you will gain exposure to the creative arts industry and build a portfolio of materials ready for your next step.

FACILITIES

Whichever one of our creative courses you choose, you will benefit from state-of-the-art studio facilities and the latest industry software including:

- Dedicated Creative Studios
- White & Dark Studios
- Silk Screen Studio & Intaglio Printmaking Studio
- 3D & Ceramics Workshop
- Apple Mac Suites & Animation Media Studio
- Film & Audio Recording Equipment
- Editing Software
- 250 Seat Theatre, Control Room and Dance & Drama Studios
- Costume & Props Workshops
- Recording & Live Sound Studios

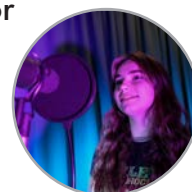
FUTURE CAREERS:

- Advertising
- Actor
- Animator
- Art Therapist
- Freelance Designer
- Graphic Designer
- Illustrator
- Live Events Producer
- Marketing
- Manager Music Producer
- Photo Journalist
- Product Photographer
- Set Designer
- Sound Technician

AVERAGE SALARY RANGE:
£19,000 - £60,000

Studying Level 3 Music Performance and Production has been amazing! Meeting like-minded people who share my passion for music has been so inspiring. This course has really boosted my confidence, and I've loved taking part in live performances and recording in the studio. After this, I'm excited to go to BIMM to study performance and songwriting.

Olive, Level 3 Music Performance and Production



CARPENTRY LEARNER JAMIE

AVERAGE SALARY RANGE:
 £23,000 - £80,000

FUTURE CAREERS:

Acoustics Consultant
 Architect
 Bricklayer
 CAD Technician
 Electrician
 Estimator
 Carpenter
 Heritage Officer
 Joiner
 Landscape Architect
 Plumber
 Quantity Surveyor
 Site Manager
 Town Planner
 Renewable Energy Systems

BUILT ENVIRONMENT

COURSES

Construction Skills* - Level 1
 Foundation in Construction & Building Services* - Level 2
 Construction Maintenance - Level 2
 Construction Design & Management - Level 3

*Learners choose from a combination of two trade areas:

Level 1 : brickwork/carpentry or electrical/plumbing

Level 2 : brickwork/civils or carpentry/roofing or electrical/plumbing

PROGRESSION:

FACILITIES

The purpose built Construction Centre contains a 380m² brick workshop, two carpentry workshops and a project area with the ability to simulate real world carpentry installations including roofing, hanging doors and assembling staircases. In addition, the joinery machine shop houses industrial standard machinery with CNC capability. There are five plumbing workshops in addition to three electrical workshops.

LEARN A TRADE TO SECURE YOUR FUTURE

Whether you want to learn a trade, or fancy a career as an architect or a civil engineer, our construction courses are a great place to start.

We work with a variety of employers, and encourage you to take part in skills competitions to ensure that on completion of your course you have the skills that employers are looking for.

I'm loving the Carpentry and Roofing Level 2 course! The tutors, with their industry experience, are so supportive, and I really enjoy learning about different types of joints and working in the workshop. After College, I'm aiming to get an apprenticeship and eventually become a self-employed carpenter.

**Jamie, Level 2
 Carpentry and Roofing**



BUSINESS

COURSES

Business & Tourism - Level 2
Business - Level 3

FIND A GAP IN THE MARKET

As a business learner you will learn about marketing, finance, events and business decision-making as well as covering topics such as branding and merchandising.

You will also be encouraged to take part in competitions to really get you thinking and to equip you for the challenges that lie ahead in the fast-paced world of business.

In addition to your main programme, Level 3 learners will also complete the Destinations Programme whilst Level 2 learners have the opportunity to work on business projects. These additional opportunities help to raise awareness and prepare learners for the world of work.

FACILITIES

With state-of-the-art classrooms featuring digital projectors, College-wide WiFi and access to Microsoft Office packages, business journals and e-learning resources, from day one you will be part of the hyper-connected business world preparing you for employment in a multitude of roles that form the backbone of today's business environment.

For budding entrepreneurs, our Enterprise Champion will help you to develop your idea and build a business plan as well as giving you opportunities to test trade. Email them to find out more: enterprise@pembrokeshire.ac.uk

Throughout the course you will also benefit from guest speakers including role models from industry and successful entrepreneurs.



I'm really enjoying the Level 3 Business course! I've made great new friends, and the lecturers are a fantastic source of support. I love meeting employers and learning about business legislation. After this course, I'm excited to study Law at university.

Billy, Level 3 Business



PROGRESSION:



FUTURE CAREERS:

- Accountant
- Advertising Executive
- Business Analyst
- Events Management
- Financial Management
- Human Resources
- Law
- Management Consultancy
- Marketing
- Public Relations
- Retail Buyer
- Sales Executive

BUSINESS LEARNER BILLY

AVERAGE SALARY RANGE:
£25,000 - £100,000+



CHILDCARE

COURSES

Introduction to Childcare - Level 1

Children's Care, Play, Learning & Development - Core/Practice & Theory*- Level 2

Children's Care, Play, Learning & Development - Core*- Level 3

*Also available as an Apprenticeship or work-based pathway.

CHILDCARE LEARNERS SIENNA, HAF & RACHEAL

HELP CHILDREN TO GROW, DEVELOP AND LEARN

If you enjoy spending time with children and are looking for a rewarding career where your days are spent helping children to learn, develop and grow, then a career in the childcare sector could be for you.

The Level 1 Certificate will develop basic skills and knowledge, enabling you to progress onto Level 2 in either childcare or healthcare.

Level 2 will give you the licence to practice in nurseries, while Level 3 is your route into industry to become, speech and language specialists, teachers and social workers etc.

FACILITIES

Childcare learners benefit from large, diverse classroom spaces, suitable for theory lessons as well as practical activities.

You will gain hands-on experience which forms an integral part of achieving the Level 2 and 3 qualifications to practice working alongside local employers where you will need to complete 280 placement hours for Level 2 and 700 placement hours for Level 3.



I'm really enjoying my childcare course, especially the practical activities like creating display boards, tuff trays and small world play. Taking part in Skills Wales Competitions and gaining experience through work placements has been fantastic. After this course, I dream of starting my own business and opening a nursery for children with special needs.

Sienna, Level 3 Childcare



WORK EXPERIENCE

With the help of the College's work experience department you will be placed in a variety of childcare settings throughout the duration of your course, developing professional skills and a wealth of hands-on experience to ensure you are employable upon qualifying.

FUTURE CAREERS:

- Child-minder
- Crèche Assistant
- Early Years Education
- Family Support Worker
- Nanny
- Nursery Assistant
- Primary Teacher
- Paediatric Nurse
- Social Worker
- Teaching Assistant

AVERAGE SALARY RANGE:
£19,000 - £48,000

PROGRESSION:



COMPUTING

COURSES

Computing & Digital Technology - Level 1
Computing & Digital Technology - Level 2
Esports & Digital Technology* - Level 2
Computing & Digital Technology - Level 3

*Subject to validation

A WORLD THAT NEVER SLEEPS

With constantly evolving technologies, our Computing and Digital Technology courses are designed to equip you with the skills and knowledge that will put you in demand in this fast-paced industry.

As a computing learner you'll benefit from a broad range of modules including: web design, systems analysis, systems design, event driven programming, digital graphics and technical support, allowing you to follow any number of higher level courses from Computer Networking to Computer Forensics and Ethical Hacking.

FACILITIES

Computing learners have access to five IT suites along with access to a full range of software as used in industry including Adobe Creative Cloud and Visual Studio.

You'll also be able to access a range of hardware including wireless routers and printers allowing you to practise setting up networks.

WORK EXPERIENCE

The Enhanced Computing & Digital technology programme is an intensive course which involves a regular work placement and additional study in cyber security, robotics and coding.

All our computing courses are career-focused with an emphasis on practical training ensuring you gain the skills and knowledge required by today's businesses.

COMPUTING LEARNER WILLIAM

PROGRESSION:



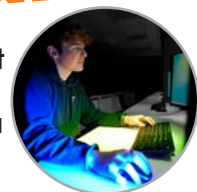
FUTURE CAREERS:

- Computer Forensics
- Cyber Security
- E-Commerce
- Games Developer
- IT Consultancy
- IT Support
- Network Administrator
- Project Manager
- Programmer
- Coding Software Manager
- Software Developer
- System Support Technician
- Web Designer

AVERAGE SALARY RANGE:
£20,000 - £50,000+

I'm really enjoying the Level 3 Enhanced IT course! Learning about databases, game development, and project management has been amazing, and our lecturers have been incredibly supportive throughout. The work experience opportunities are a great bonus. After this course, I'm excited to head to university to explore the world of computing further!

William, Level 3 Enhanced IT





FUTURE CAREERS:

CAD Designer
CNC Operator
Diagnostic Technician
Electrical Engineer
Maintenance Engineer
Marine Engineer
Mechanical Engineer
MOT Tester
Process Operator
Quality & Inspection Officer
Service Manager
Vehicle Fitter
Welder

AVERAGE SALARY RANGE:
£20,000 - £80,000

ENGINEERING

COURSES

Automotive Maintenance - Level 1
Welding - Level 1
Mechanical Engineering - Level 1, 3
Mechanical Engineering Craft - Level 2
Electrical & Electronic Engineering - Level 3
Enhanced Marine Engineering - Pre-cadetship - Level 3
Enhanced Mechanical Engineering - Level 3

ENGINEERING LEARNER JAYDEN

ENGINEER YOUR FUTURE

Without engineers the world as we know it would grind to a standstill. Whichever route you choose, your time will be split between learning the theory and spending time in our industry standard workshops learning your trade.

These practical hands-on courses will prepare you for an apprenticeship, progression to university and a career in one of the many strands of the engineering industry.

FACILITIES

You'll have access to industry standard facilities including:

Mechanical Engineering: Lathes, milling machines, surface and cylindrical grinders, forges, sheet metal work equipment and access to specialist software and facilities e.g. AutoCAD, Shell Control Room, SolidWorks and Inventor.

Automotive: Three fully featured workshops, a rolling road, specialist computer diagnostic equipment and camera operated wheel alignment.

Marine & Maritime: We have a modern and well equipped marine engineering facility which prepares learners for a career in the marine and maritime industry.

Welding, Fabrication, Plating & Pipework: Our new centre of excellence with an industry standard indoor and outdoor welding/fabrication training facility.

Electronic Engineering: Virtual Control Room, PLC laboratory with Siemens systems and a PLC target training system, instrumentation, control and an electronics training facility.



I'm loving the Level 3 Hairdressing course! It's a big step up from Level 2, and I enjoy meeting new people, learning different cutting styles, and working with brands like Milkshake and Hair Syrup. After College, I hope to work on a cruise ship doing hair.

Lucie, Level 3 Hairdressing



HAIRDRESSING & BEAUTY THERAPY

COURSES

Beauty Therapy* - Level 1, 2
Hairdressing* - Level 1, 2

*For more experienced learners, an accelerated Level 1/2 programme may be available.

PROGRESSION:



BE BOLD, BE DARING, BE BEAUTIFUL

If you enjoy making people look and feel amazing then our suite of hairdressing, beauty and complementary therapy courses are the first step to making it your full-time job.

Our strong links with local hotels and spas, as well as national employers such as Steiner Cruise Liners and Ragdale Hall, can open up a variety of career pathways or progression onto higher education.

Each year learners are encouraged to compete in regional and national skills competitions. You'll also have the opportunity to attend master classes and events.

FACILITIES

Your training will take place in industry standard salons and treatment rooms using the latest equipment and products including Milkshake, Eve Taylor, OPI and GHD.

WORK EXPERIENCE

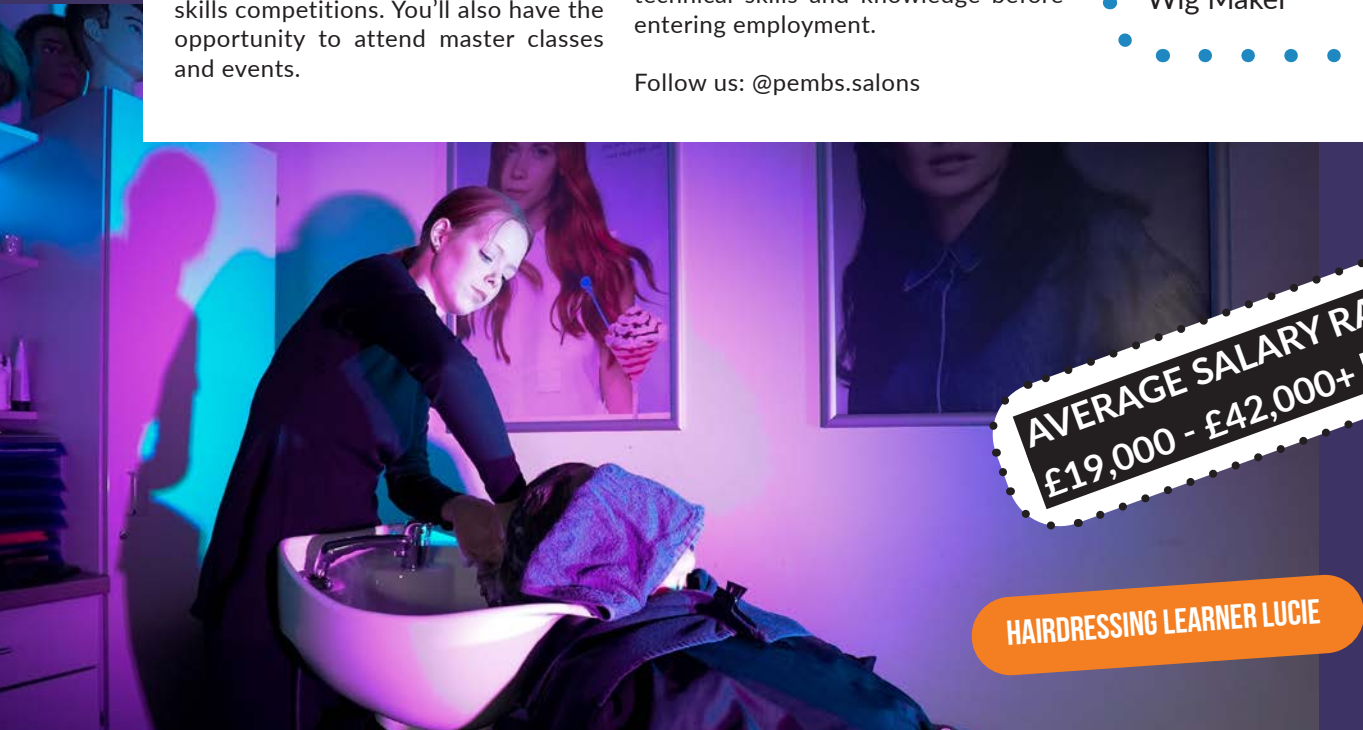
Our hair and beauty salons are open to the public and recreate a real workplace environment. Level 1 courses develop your general skills such as customer service which are transferable to any career as well as building basic skills in your chosen pathway. Level 2 and 3 qualify you to practice and enable you to build your technical skills and knowledge before entering employment.

Follow us: @pembs.salons

FUTURE CAREERS:

- Barber
- Beauty Therapist
- Colour Technician
- Complementary Therapist
- Hairdresser
- Image Consultant
- Make-up Artist
- Nail Technician
- Salon Manager
- Spa Therapist
- Wig Maker

AVERAGE SALARY RANGE:
£19,000 - £42,000+



AVERAGE SALARY RANGE:
£20,000 - £70,000

HEALTH & SOCIAL CARE

COURSES

Health & Social Care - Level 1

Health & Social Care* - Level 2

Health & Social Care** - Level 2/3

*Also available as Apprenticeship or work-based pathway.

**For more experienced learners, an accelerated Level 2/3 programme may be available.

WANT A CAREER FOCUSED ON HELPING PEOPLE?

If the answer is yes, then a course in Health and Social Care could help you reach your dream job.

The Level 1 Certificate will develop basic skills and knowledge, enabling learners to progress onto Level 2.

Level 2 is the new industry standard qualification which is mandatory for all workers employed in a care setting.

Successful completion of the Level 3 Extended Diploma can lead to progression onto a higher level programme allowing you to access future career opportunities including: Nursing, Midwifery, Health Visitor, Paramedics, Speech and Language Therapists and Occupational Therapy.

FACILITIES

All courses have access to a variety of resources which would be used in care and hospital settings and some will be based in our newly refurbished laboratories.

I'm really enjoying the Level 3 Health and Social Care course! The work placement opportunities are amazing, and I've loved learning about first aid, safeguarding, wellbeing, and health and safety. After college, I hope to become a nurse in the army.

**Hannah,
Level 3 Health
& Social Care**



WORK EXPERIENCE

Work placement is a fundamental part of our courses, especially on Level 2 and 3 where attendance at a placement in a care or health setting is required. Links with employers such as Hywel Dda University Health Board and care homes across the county, allow learners to apply skills they have learnt in the classroom in a real environment.



HEALTH & SOCIAL LEARNER HANNAH

FUTURE CAREERS:

- Care Worker
- Forensic Scientist
- Health Visitor
- Midwife
- Nursing (various)
- Occupational Therapist
- Paramedic
- Psychologist
- Radiographer
- Social Worker
- Sociologist
- Youth Worker

PROGRESSION:



PROFESSIONAL COOKERY LEARNER DARCIE

HOSPITALITY & CATERING

COURSES

Introduction to Professional Cookery / Food & Beverage Service* - Level 1,2

*For more experienced learners, an accelerated Level 1/2 programme may be available.

COMBINE FOOD & PEOPLE FOR A TASTY CAREER

As part of our courses you will learn how to produce à la carte cuisine as well as learning barista skills, silver service, flambé, mixology and excellent customer service skills plus so much more.

You will also be encouraged to undertake work placements. Previous placements have included: the Grove of Narberth, Llys Meddyg, The Retreats Group, Hammet House, Gleneagles, Celtic Manor, Harbourmaster (Aberaeron) and Slebech Park. You will also have the opportunity to showcase your skills in competitions such as WorldSkills UK.

Follow us on instagram:
@seed_restaurant

FACILITIES

You will learn in our industry standard kitchen, training kitchen and commercial restaurant with bar and coffee shop.

Learners will also take part in SEED master class workshops where you will learn from top names in the hospitality and catering industry and visit renowned restaurants.

You will gain skills both in the kitchens and front of house. With fine dining evenings every Thursday during term-time where you will also work alongside some of the top chefs in Pembrokeshire and beyond.

Our restaurant is open to the public, as well as to College staff and learners, giving you the opportunity to put your skills into practise.

FUTURE CAREERS:

- Bar Manager
- Chef (various positions)
- Dietitian
- Food Technologist
- Events Management
- Hospitality Management
- Hotel Operations
- Environmental Health Officer
- Sommelier
- Technical Brewer

PROGRESSION:



AVERAGE SALARY RANGE:
£25,000 - £58,000

I love the diversity of the Hospitality course, from learning Front of House skills to preparing dishes in the kitchen. Working with The Grove at the Croeso Awards was an amazing experience that led to part-time employment opportunities. After this course, I plan to work on a cruise ship!

Darcie, Level 3 Professional Cookery and Hospitality



PROGRESSION:



PROTECTIVE SERVICES & FUTURES IN EMPLOYMENT

COURSES

Futures in Employment - Level 1
Protective Services, Sport & Leadership - Level 2
Protective Services - Level 3

RISE ABOVE THE REST

Our protective services courses are the perfect preparation for learners who are looking to pursue a career in the uniformed public services, armed forces or in the civil service.

We'll prepare you for a career in one of the biggest employment sectors in the UK. You will learn all about leadership, teamwork, citizenship and diversity as well as law and the legal system.

The Futures in Employment course is suited for learners who want to develop practical skills, confidence, team building and a wide range of skills needed for employment or further study. It is also suitable for learners interested in a career in protective services such as the Police, Fire and Rescue, Ambulance Service, Border Agencies and the British Armed Forces.

FACILITIES

With theory sessions based in our well-equipped classrooms you'll also undertake sessions in the sports hall and fitness suite. Level 3 learners will also take part in an outdoor expedition.

As part of your course you'll also benefit from guest speakers, a training day with the Fire Service, and fitness sessions with the Military as well as benefiting from our partnership with Dyfed Powys Police which allows learners to get a real taste of the front-line.

THE SERVICES ACADEMY

The Academy is aimed at anyone looking to pursue a career with the emergency services or with the military and is open to all College learners. The Academy runs each Wednesday and will help you to build the skills needed for your chosen career.

FUTURE CAREERS:

- Armed Services
- Civil Service
- Coastguard
- Customs & Excise
- Emergency Planning
- Fire Service
- Immigration
- Local Government
- Paramedic
- Police Service
- Security

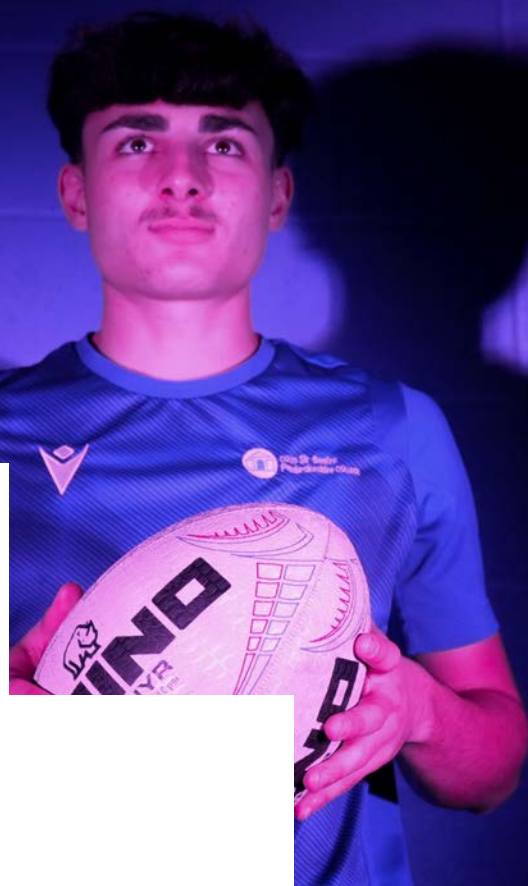
AVERAGE SALARY RANGE:
£21,000 - £123,000

The Futures in Employment course has been fantastic! I've made new friends, boosted my confidence, and really enjoyed the sport and leadership aspects. I'm hoping to progress to the Level 2 Protective Services course and eventually join the army.

Daisy, Futures in Employment



LEVEL 3 SPORT LEARNER BOWYN



SPORT

COURSES

Protective Services, Sport & Leadership - Level 2
Sports, Fitness and Personal Training - Level 3
Sports Coaching & Development - Level 3

TURN YOUR PASSION INTO A CAREER

If you are passionate about sport or fitness this is the place for you. As part of the sport courses you will learn the theory of sport and or fitness as well as having plenty of time to practise your chosen sport and develop your coaching skills or fitness knowledge.

As a sports learner you will be part of the College's Sports/Fitness Academies (rugby, football and girls sports) and take part in weekly training and fixtures to improve your skills and build your knowledge.

All of the sports and fitness courses are career focused. Alongside the theory elements you will have the opportunity to undertake practical experiences e.g. coaching students or developing training programmes for clients to help develop your skills. You may also have the opportunity to undertake additional qualifications such as sports leaders, nutrition, Duke of Edinburgh and some coaching awards.

I'm really enjoying the Level 3 Coaching and Development course! The mix of physical training, rugby focus, strength and conditioning, and the support from the lecturers makes it the perfect foundation for a career in rugby coaching.

Bowyn, Level 3 Sport



FACILITIES

Enrol on one of our sports courses and you will benefit from a fully equipped cardio gym, strength and conditioning gym, sports hall and state-of-the-art classrooms.

You will also be taught by highly experienced lecturers including a former Professional Rugby Player, a former International Athletics Welsh Champion, a UEFA Level 3 Football Coach and WRU Coaches.

FUTURE CAREERS:

- Gym Instructor
- Nutritionist
- Outdoor Adventure Instructor
- Performance Analyst
- Personal Trainer
- PE Teacher
- Sports Coach
- Sports Conditioning Therapist
- Sports Development Officer
- Sports Scientist

AVERAGE SALARY RANGE:
£20,000

Follow us on Twitter: @pembssport

FUTURE CAREERS:

Adventure Tourism Manager
 Air Cabin Crew
 Cruise Ship Steward
 Entertainment Co-ordinator
 Hotel Manager
 Resort Manager
 Tourism Officer
 Travel Agent
 Visitor Attraction Manager

AVERAGE SALARY RANGE:
 £19,000 - £85,000+

TRAVEL & TOURISM

COURSES

Travel & Tourism - Level 2
 Travel & Tourism - Level 3

TRAVEL & TOURISM LEARNER CHLOE

LET YOUR CAREER TAKE FLIGHT

Our travel and tourism courses are designed to equip you with the skills and knowledge to progress to further study, or directly into employment, in this rapidly expanding sector.

Whether your dream job is to become a resort representative, tour guide, chalet host, travel agent or to work at a top tourist attraction, our Level 2 and Level 3 programmes will set you on the right track.

With a wealth of opportunities both internationally and locally, the tourism industry is without doubt one of the most exciting industries to be in right now.

FACILITIES

As a College learner you'll benefit from state-of-the art classrooms featuring digital projectors, College-wide WiFi and access to Microsoft Office packages.

Throughout the course you will also benefit from guest speakers covering the breadth of the travel and tourism industry from hotels to tourist attractions, airports, airlines and much more.

You'll also have the opportunity to go on a number of trips and visits to explore the wide variety of tourism destinations available in the UK as well as finding out about the huge number of roles offered by this exciting industry sector.

This course has provided me with confidence and a plethora of knowledge about the travel and tourism sector which will be essential as I move forward in my studies and career.

**Chloe,
 Level 3 Travel
 & Tourism**

PROGRESSION:

LIFE SKILLS ACADEMY

COURSES

Skills for Life - Pre-Entry
Skills for Life Plus - Entry 1
Skills for Employment - Entry 2
Skills for Progress - Entry 2
Preparation for Life - Entry 2/3

Preparation for Further Education - Entry 2/3
Preparation for Employment - Entry 2/3
Preparation for Progress - Entry 2/3
Pathway 4 - Entry 3/Level 1
Passport to Success - Level 1

PREPARING YOU FOR LIFE

These courses are for learners who have a broad range of additional learning needs (ALN) and disabilities.

Programmes are tailored to individual learner needs, abilities and aspirations. Learners have the opportunity to develop their vocational skills such as woodwork, horticulture, enterprise, drama, IT, sports, cooking etc.

ABOUT THE LIFE SKILLS ACADEMY

The Life Skills Academy programmes have been specifically designed to allow individuals to learn and live more independently. Learners will develop their social skills, engage with their community, improve their health and wellbeing, literacy, numeracy and digital literacy and develop employability skills.

There is a highly inclusive approach to supporting Life Skills Academy learners, which starts while they are in school. Learners are invited to attend a number of transition events including a Link Programme which gives learners a chance to spend up to two days in College, meeting the tutors, other learners and getting to know the College.



I enjoy all of the course, I enjoy going up to Withybush site, it's nice to be in a different location. I enjoy learning about careers and different types of jobs and I like gardening in the polytunnel where we have done some weeding and preparing the soil for planting.

Katie, Preparation for Work

FACILITIES

Learners are fully supported throughout their programme by tutors and a team of experienced learning support assistants. The Life Skills Academy boasts bespoke facilities, equipment and resources for learners with a wide range of additional learning needs, learning difficulties and disabilities.

Our programmes and delivery use a person-centred ethos to enable learners to develop transferable skills which will help them prepare for employment opportunities, volunteering and further education, as well as helping to prepare them for independent living.

OPPORTUNITIES:

Learners have access to specialist equipment, resources and software to aid their learning, as well as a bespoke off-site vocational training centre.

LIFE SKILLS ACADEMY LEARNERS JUNIOR AND KATIE



SAY HELLO!



pembrokeshire.ac.uk | 0800 9 776 788 | admissions@pembrokeshire.ac.uk

Disclaimer

The College takes all reasonable steps to provide the educational services and courses as described in this prospectus. Details are correct at the time of going to press but may be subject to change without prior notice. Courses will not run if learner numbers are insufficient. The College has the right to refuse individuals entry to courses in certain circumstances. Prospective learners may be advised of more suitable alternatives, if appropriate.