



COLEG Sir Benfro
Pembrokeshire COLLEGE

A-LEVEL COURSES

2022/2023

THINK**MORE**. LEARN**MORE**. BE**MORE**.

THINKMORE. LEARNMORE. BEMORE.

27 A-LEVEL SUBJECTS

**BIOLOGY | BUSINESS STUDIES | CHEMISTRY |
COMPUTER SCIENCE | DRAMA | ECONOMICS |
ELECTRONICS | ENGLISH LANGUAGE & LITERATURE |
ENGLISH LITERATURE | FINE ART | FRENCH | FURTHER
MATHS | GEOGRAPHY | GOVERNMENT & POLITICS |
HISTORY | LAW | MATHEMATICS | MEDIA STUDIES
MUSIC | PHOTOGRAPHY | PHYSICAL EDUCATION
PHYSICS | PSYCHOLOGY | RELIGIOUS STUDIES |
SOCIOLOGY | SPANISH | WELSH - 2ND LANGUAGE |
WELSH BACCALAUREATE**

Amazing A-level results 2021

41% A*-A

69% A*-B

86% A*-C

OUR A-LEVEL RESULTS ARE AMONG THE BEST IN THE COUNTY.

THINKMORE. LEARNMORE. BEMORE.



THE WORLD IS YOUR OYSTER

Whatever you want to be, at Pembrokeshire College our aim is to ensure that you receive an exceptional learning experience.

With industry standard facilities and teaching staff with real industry experience, we are dedicated to unlocking your potential and equipping you with the skills and experience you will need to progress to further study or into employment.

Once you have made the decision to join Pembrokeshire College you will be treated like an adult. We will provide you with the best possible teaching, care, support and guidance to help you along the way and enable you to fulfil your ambitions. In return, we expect you to strive for 100% attendance, to commit to your course and to take full advantage all the opportunities presented to you.

I look forward to welcoming you to Pembrokeshire College.



Dr Barry Walters

Principal

**MAE'R LLYFRYN HWN AR GAEL YN GYMRAEG.
THIS BOOKLET IS AVAILABLE IN WELSH.**

THINK MORE. LEARN MORE. BE MORE.

OXBRIDGE SUCCESS 2021

In September 2021, College learners secured 11 Oxbridge interviews, with two full-time learners and one federation learner progressing to Cambridge.

University of Cambridge:

History of Art
Engineering
Philosophy

Cambridge bound:

Imogen Grimes, (A*A*AA), will be reading History of Art, and Samuel Rummery will be reading Engineering after securing A*A* and A* in EPQ alongside three A* grades last year. With an A* in Sociology alongside outstanding A* results from her base school of Milford, federation learner Izzy-May Solomon progresses to read Philosophy.



FLYING HIGH

UNIVERSITY DESTINATIONS



Pembrokeshire College has established a strong reputation for preparing students for entry to top universities both in the UK and overseas.

We specialise in preparing students for their university interviews and equipping them with the knowledge to follow their chosen degree pathway. We specialise in helping learners to gain acceptance onto the following disciplines:

- + Medicine
- + Dentistry
- + Veterinary Science
- + Midwifery
- + Engineering
- + Economics
- + Finance
- + Optometry
- + Business
- + Maths
- + Law

Top university destinations over the past three years include:

University of Oxford
University of Cambridge
University of Bristol
University of Warwick
University of Leeds
University of Liverpool
University of Exeter
Cardiff University
Durham University

THINKMORE. LEARNMORE. BEMORE.

MEET THE TEAM



Eva Rees, Head of Faculty



A-level Support Team:
Sara Hannon, Jo Tytler & Lyn Ward



Emma Lippiett,
Curriculum Area Manager

I am delighted that you are considering A-levels at Pembrokeshire College to continue your studies. Pembrokeshire College is one of Wales' leading Further Education colleges and we are very proud of our A-level results at both A2 and AS.

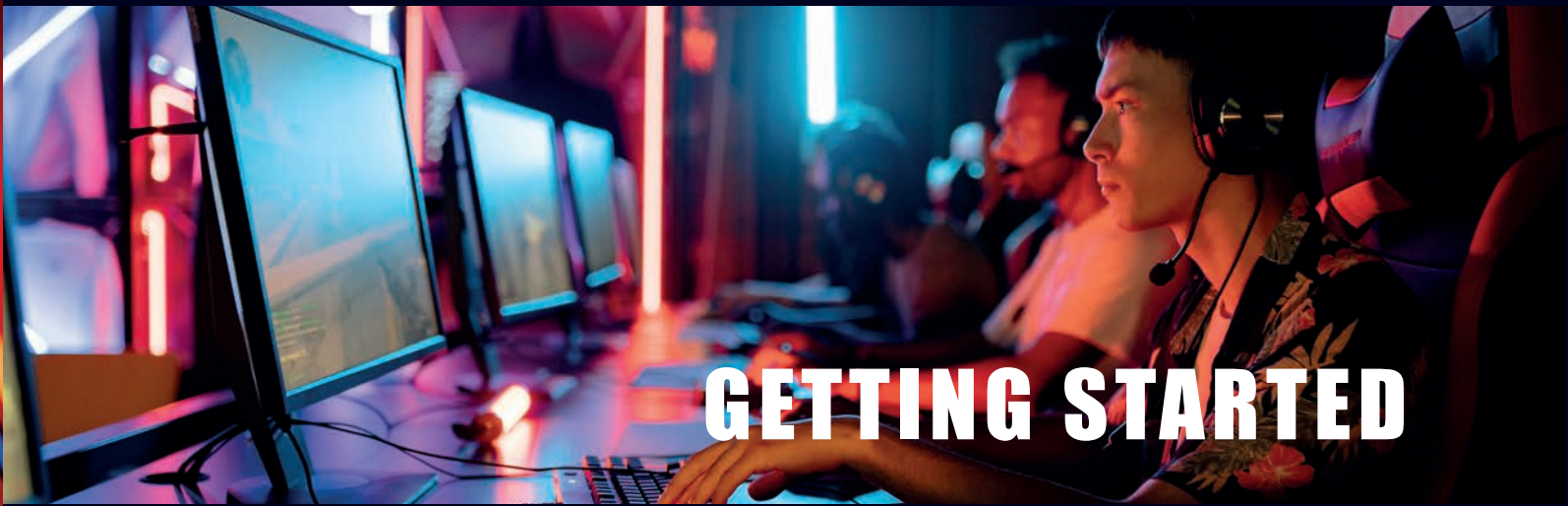
You can choose from a range of 27 A-level subjects and by working with our excellent lecturers you have a great chance to fulfill your potential.

Everybody at Pembrokeshire College is committed to ensuring that you excel in your chosen programme and leave College with the results and skills that will better equip you for university, an apprenticeship or employment.

We will aim to stretch and challenge you to achieve your potential in a safe, happy, and stimulating environment. You will have access to state of the art facilities with purpose built A-level science laboratories and modern classrooms.

I hope you will come and join us at Pembrokeshire College and I look forward to welcoming you in the near future. If you have any questions, concerns or queries please do not hesitate to contact us.

EVA REES
HEAD OF FACULTY FOR A-LEVELS AND SKILLS



At Pembrokeshire College we employ teaching staff who have specialist academic post-16 qualifications and real industry expertise. This combination ensures that you receive high quality teaching that is both engaging and stimulating, guaranteeing you the best possible start at advanced level.

- THE AS/A2 STUDY PROGRAMME CONSISTS OF THE FOLLOWING:
Students can choose three or four A-levels (depending on their ability and aspirations).
- » All students will study the Welsh Baccalaureate (WBQ) unless they opt to take four A-levels following exceptional GCSE performance.
 - » Students will be expected to attend both personal and group tutorials, these are mandatory timetabled sessions.

VESPA: A-LEVEL MINDSET
Students will attend tutorials and seminars based on the A-level Mindset. This will help students to identify the skills required for successful A-level study.

Students who demonstrate the 5 elements of VESPA are more successful:

VISION	You know what you want to achieve	
EFFORT	You put in many hours of proactive independent study	
SYSTEMS	You organise your learning resources and your time	
PRACTICE	You develop your skills through consistent practice	
ATTITUDE	You respond constructively to setbacks	

WE ARE HERE FOR YOU



TRANSITION AND SUPPORT

SUPPORTING YOU:

Learning Coaches
Pastoral Support Coaches
Student Counsellor
College Nurse
Student Finance Officer
Learning Support Assistants
Inter-denominational Chaplain
Advice & Guidance Officer
Employment Bureau
Plus much more...

At Pembrokeshire College we provide an inclusive learning environment offering support for all learners to ensure a safe and positive environment for all.

ADVICE AND GUIDANCE

If you're unsure as to what you would like to do, our admissions team are always on hand with impartial advice and guidance to help you choose the right course. If you have any questions please email: admissions@pembrokeshire.ac.uk

PEMBROKESHIRE.AC.UK | 0800 9 776 788

COMMUNICATION

KEEPING YOU ON TRACK:

Personal Tutorials
Target Setting
Online Learner Profile
100% Attendance
Directed Study
AS & A2 Seminars

EVERY LEARNER HAS A PASTORAL SUPPORT COACH

Pastoral Coaches are assigned to learners and all learners receive tutorial support each week. The tutorial programme ensures all learners receive a consistent and appropriate level of support, advice and guidance. This can be in group sessions or on an individual basis.

MONITORING YOUR PROGRESS

The progress of learners is monitored through the online Learner Profile which allows monitoring and follow up in 'real time'. Parents and guardians can have access to this information with the permission of the learner.

TARGET SETTING

Learners are set learning targets through individual tutorials and through learning agreements and action plans. All targets are recorded on the Learner Profile and are monitored through the tutorial process. Additional support is provided by Learner Coaches for the achievement of targets.

WE EXPECT 100% ATTENDANCE

All students agree to 100% attendance and a code of conduct at the outset of their course which leads to a sense of shared responsibility. A strong but supportive Student Disciplinary Policy is in place and there is a dedicated resource to work with any student who is at risk of disengagement.



REACH YOUR GOALS

SKILLS

LET'S DO THIS:

Communication
Organisation
Planning
Teamwork
Goals

CRITICAL SKILLS

Whether you are looking to go straight into employment or progress to higher level study, English and Maths are viewed by employers and universities as critical skills to have.

Whatever your programme of study, our lecturers and learning support staff are committed to helping you to improve your reading, writing, communication and mathematics skills so you leave College with the skills you'll need to progress.

IMPROVING YOUR GRADES

Maths and English are core to all learning programmes at Pembrokeshire College. If you haven't already achieved a grade C or above in English Language and/or Mathematics we will automatically enrol you onto English and/or Mathematics classes as part of your programme.

CYMRAEG:

Bore da
Shwmae
Pwy wyt ti?
Nos da

WELSH

All College students are encouraged to have an appreciation of Welsh language and culture. Students who have previously completed any learning through the medium of Welsh will be encouraged and supported to maintain and develop those skills. All students can access tutorials, essential skills and aspects of their course through the medium of Welsh if they wish to do so.

AN INCLUSIVE ENVIRONMENT

DIVERSITY:

Let's be kind

The College is committed to providing an inclusive education for all students with additional needs and/or disabilities. We also have strong links with specialist provider schools, employers, charities and other specialist organisations to make your transition to College as smooth as possible. Amongst other things we are able to support with: Assistive Technology | Autism | Dyslexia | Learning Difficulties and Physical Disabilities | Sensory Impairments | General Well-being.

THINKMORE. LEARNMORE. BEMORE.



01 //

MORE ABLE AND TALENTED

All A-level students receive UCAS (University & Colleges Application Service) support. There is also extra support via our MAT programme for high achievers and a MAT panel of senior academics has been selected to help students develop areas of excellence through specialist guidance and mentoring.

Pembrokeshire College is a member of a network of partnership hubs called the SEREN HUBS. The hubs were created to enable schools and colleges to share resources with a means to preparing more Welsh students for universities like Oxford and Cambridge. Students can benefit from:

- » Mentoring by external specialists
- » Mock interviews with an Oxbridge consultant
- » MAT bursaries
- » Attendance at Vet Med & Medlink conferences
- » SEREN network activities
- » An event for Russell Group & Oxbridge applicants at the Liberty Stadium
- » Aspirational target setting
- » Access to MIT Global Teaching Lab sessions

02 //

MAKE A DIFFERENCE

At College we encourage learners to get involved with how the College operates and to be involved in decision making. The following roles give our learners the opportunity to really make a difference:

- » Stand for Student Governor
- » Become a Course Rep
- » Sign up to be a Student Ambassador
- » Become a Safeguardian



BEYOND THE CLASSROOM

03 //

BE REWARDED

Sign up for an NUS card and access over 200 discounts for just £12 per year.

DISCOUNTS INCLUDE:

- » 40% off Pizza Express
- » 10% off Jacks Wills
- » 10% off ASOS
- » 10% off Topshop
- » 25% off Odeon Cinema tickets

04 //

GET INVOLVED

- » Start a Club
- » Join a Sports Academy
- » Join the Environment Committee
- » Join Duke of Edinburgh
- » Join the A-level Social Committee
- » Sign up for A-level Trips
- » Find out about Outlook Expeditions
- » Join the College Choir
- » Join the Debating Society

05 //

SOCIALISE

- » Transition Day
- » Freshers Fair
- » Enterprise Week
- » Christmas Fair
- » Summer BBQ
- » Masquerade Ball
- » Summer Prom
- » Clubs & Societies
- » Sport
- » Plus much more...

AMAZING FACILITIES

As a Pembrokeshire College student you'll have access to a whole host of amazing facilities and resources. From state-of-the-art classrooms and laboratories to a fully equipped gym, and plenty of spaces to eat and relax.



IT/MAC SUITES



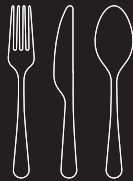
SCIENCE LABS



STUDY AREAS

STUDY

ENJOY



GRAB BREAKFAST
IN OUR REFECTORY



STARBUCKS



LUNCH IN THE
RESTAURANT



ACCESS SUPPORT IN
THE HWB



EMPLOYMENT
BUREAU



GYM AND SPORTS
HALL

SELF CARE

PAMPER



HAIR SALONS



BEAUTY SALONS



WATCH A SHOW IN
OUR MERLIN
THEATRE

HOW TO APPLY?



This process also applies to students wishing to federate to us in September 2022

STEP 1 - OPEN EVENING

Attend one of our Open Evenings where you can take a tour of our facilities and speak directly to our lecturers and support team. You can also find information on all our courses on our website: **pembrokeshire.ac.uk**

If you are unsure of which course is right for you, our friendly Advice and Guidance Team are always on hand as well as Careers Wales.

Check out our website for details of upcoming Open Evenings.

STEP 2 - APPLICATION

Apply via our website - search for your course then apply online. You'll need to create an account which will allow you to track your application.

If you need some help completing your application, please make an appointment to see our Admissions team on: **0800 9 776 788**.

STEP 3 - 1:1 GUIDANCE

Once we have received your application you will be invited to attend one of our virtual guidance events where subject lecturers will give you some more information on the course.

Finally, you will be asked to complete your online enrolment in August where we will check your GCSE results and enrol you onto your course.

FINE ART, DRAMA & THEATRE STUDIES, MEDIA STUDIES, MUSIC & PHOTOGRAPHY

You may be surprised to learn that the creative industries are one of the fastest growing economic sectors in the UK.

With this in mind, our creative A-levels are designed to challenge learners to explore and channel their creativity preparing them for degree level study and careers in this eclectic sector.

These programmes can be an exhilarating and fast-paced experience and will require learners to be committed to pushing boundaries and thinking outside the box. Learners will develop their emotional intelligence and learn to become self-critical. Learners will be stretched and will develop great communication and organisational skills - all skills which are valued by employers regardless of industry sector.

All our creative courses are delivered by industry professionals who have a wealth of knowledge and are practising artists, photographers and musicians.

ENTRY REQUIREMENTS

All AS students should have a minimum of 5 GCSEs at Grades A* – C. Additionally, learners will be required to have a minimum GCSE grade as indicated below:

Art - Art B (or suitable portfolio of work) and English Language/Welsh (first language) C

Drama & Theatre Studies - Drama B (or equivalent) and English Language/Welsh (first language) B

Media Studies - English Language/Welsh (first language) B

Music - Music B (or equivalent minimum Grade 5) and English Language/Welsh (first language) B

Photography - Art C (or digital portfolio of work) and English Language/Welsh (first language) C

Please check the website for each individual subject's entry criteria.

“YOU DON'T TAKE A PHOTO YOU MAKE IT.”



OTOGRAPH,

- ANSEL ADAMS



THINKMORE. LEARNMORE. BEMORE.

MEET THE LECTURERS

ART - FINE ART

RICHARD BROOKS: BA (Hons), PGCE

Richard has been a practising artist for most of his life. After graduating from Kingston University with a BA in Fine Art Sculpture he practised and exhibited before moving into teaching.

CATH BROOKS: BA (Hons), PGCE

Cath also studied Fine Art at Kingston University and draws daily. She is the Curriculum Area Manager for the Creative Arts and supports all learners in becoming engaged members of the College's creative family.

DRAMA & THEATRE STUDIES

JOHNNY LOCK: BA (Hons), PGCE

Johnny trained at East 15 Acting School and worked as an actor in London for a number of years before setting up his own theatre company and relocating to Pembrokeshire.

MEDIA STUDIES

ANDREA MCCARTHY: BA (Hons), PGCE

Andrea studied Broadcast Media and Popular Culture in Cardiff. After completing her degree she worked in America teaching Stop Motion Animation and Radio Broadcasting.

LAURA GOLDSMITH BA (Hons), PGCE

Laura comes to us from an academic and teaching background in Drama and Media, and is also one of our pastoral support coaches.

MUSIC

STEPHEN KITE: BA (Hons), PGCE

A former Head of Music in a Comprehensive School in London, Stephen's influences in music are diverse and range from Jazz Piano to Drum and Bass. Stephen has helped forge extended projects with the Royal Opera House, English National Opera, Wigmore Hall and the Camden Roundhouse.

PHOTOGRAPHY

BARBARA SIMON: BA (Hons), PGCE

Barbara studied BA (Hons) Visual Arts at Swansea and is a practising commercial photographer and artist. She works in various media such as 35mm film, pinhole photography, digital photography and silkscreen printing, combined with mixed medium painting.

BIOLOGY CHEMISTRY PHYSICS

If you're curious about the world around us and want to understand how the human body works or what lies beyond our own universe then A-level science can help you to answer these questions plus many more.

Through our science A-levels you will develop skills in planning and conducting investigations, gathering information and evaluating findings. You will learn about the many roles that scientists play in our everyday lives and begin to explore where advances in science could take us in the future.

Studying science at A-level can lead to a wide variety of interesting degree courses and career opportunities. These programmes are designed to expand your mind and equip you with many transferable skills.

ENTRY REQUIREMENTS

All AS students should have a minimum of 5 GCSEs at Grades A* – C. Additionally, learners will be required to have a minimum GCSE grade as indicated below:

Biology - Biology B (plus another Science at B) or Science BB and Maths B

Chemistry - Chemistry B (plus another Science at B) or Science BB and Maths B

Physics - Physics B (plus another Science at B) or Science BB and Maths B. (Also need to study AS Mathematics)

Please check the website for each individual subject's entry criteria.

“THE IMPORTANT THING QUESTIONING (OR LEAR



**G IS NEVER STOP
ARNING)."**

- ALBERT EINSTEIN



THINKMORE. LEARNMORE. BEMORE.

MEET THE LECTURERS

BIOLOGY

KATE BASSETT-JONES: BSc (Hons), PGCE

After graduating with a degree in Environmental Biology, including a year teaching Environmental Education in Tennessee, Kate completed her PGCE in Cardiff. She teaches A-level Biology as well as running overseas expeditions and the Duke of Edinburgh's Award for our College students.

EMMA EMBERSON: BSc (Hons), PGCE

Emma studied Applied and Agricultural Zoology at the University of Leeds and spent three months studying biodiversity in primary rainforest. Emma has been teaching maths and sciences for over 20 years. Her roles have included Head of Year (years 7, 10, 11) and SEN departmental coordinator.

JENNY LLEWELLYN: BSc (Hons), PGCE

Jenny studied Ecology at Queen Mary College, University of London. She then spent time in Zimbabwe with Operation Raleigh carrying out community, research and adventure projects before working for Shell Research station in Kent. After gaining her PGCE she taught Science, A-level Biology and Medical Science in secondary schools for 21 years.

BIOLOGY & CHEMISTRY

ANGHARAD MILES: BSc (Hons), PGCE

After graduating with a BSc (Hons) degree in Neuroscience from University College London, Angharad returned home to Pembrokeshire to pursue a career in teaching Biology, Chemistry and Mathematics.

PHYSICS

DR. HELEN COOMER: MNatSci, MA, PhD, PGCE, CSciTeach, PGCE

After completing her masters degree in Natural Sciences at the University of Cambridge, Helen worked as a research scientist in the civil service, during which time she undertook her PhD. Helen then spent several years as a scientist and manager for multinational companies before moving into teaching.

CHEMISTRY

MICHAEL DAWES: BSc (Hons), PGCE

After graduating with a degree in Biochemistry from Bristol University, Mike moved into the petrochemical industry before joining the Pembrokeshire College teaching team. Mike is also a member of our online team, teaching Chemistry to students from around the world.

BUSINESS STUDIES ECONOMICS GOVERNMENT & POLITICS LAW

Today business, economics, politics and law are 'big' business.

Through the Business Studies A-level you will develop a critical understanding of business organisations, the markets they serve and the process of adding value.

In Economics you will develop an appreciation of the contribution of economics to the understanding of the wider economic and social environment through studying both micro and macro economic theories.

For Government and Politics you will need an interest in contemporary politics and the ability to critically analyse, interpret and evaluate political information as you study the importance of politics to your own life and society as a whole.

Finally, choose Law and you will gain an understanding of how the law affects every person, every day of their lives, in some form or another. You will develop an understanding of both private and public law within the law of Wales and England alongside developing an understanding of legal method and reasoning as used by lawyers and the judiciary.

ENTRY REQUIREMENTS

All AS students should have a minimum of 5 GCSEs at Grades A* – C. Additionally, learners will be required to have a minimum GCSE grade as indicated below:

Business Studies - English/Welsh (first language) B and Maths or Numeracy B

Economics - English/Welsh (first language) B and Maths or Numeracy B

Government & Politics - English/Welsh (first language) B

Law - English/Welsh (first language) B

Please check the website for each individual subject's entry criteria.

“IF YOU REALLY LOOK CLOSE ENOUGH, YOU CAN FIND OVERNIGHT SUCCESSSES



**LOSELY, MOST
S TOOK A LONG TIME."**

- STEVE JOBS



THINKMORE. LEARNMORE. BEMORE.

MEET THE LECTURERS

BUSINESS STUDIES AND GOVERNMENT & POLITICS

JULIA MILES: LL.M, LLB (Hons), PGCE

After graduating with an honours degree from Southampton University, Julia went into partnership with her husband and continues to be involved in running the family business. She has been teaching at the College for 20 years and has been involved in developing online courses in business and has undertaken supervision for dissertations. Julia completed a Masters in Law from Cardiff University at the same time as undertaking full-time teaching.

LAW

JOY SANDIFER: MSc, LLB (Hons), PGCE

Joy graduated with a law degree from Cardiff University followed by an MSc in Business Management after a successful career working with the Cardiff Chamber of Commerce. Joy has written and produced A-level revision guides and has developed Institute of Leadership and Management online courses for distance learning.

ECONOMICS

HELEN STODDART: BA (Hons), Msc

Helen studied economics and statistics at York University and Sheffield University before embarking on a career in local journalism. Helen switched to teaching 20 years ago when she joined Pembrokeshire College where she has been part of the A-level team for over ten years.

COMPUTER SCIENCE ELECTRONICS

Information Technology is one of the fastest growing global industries constantly expanding and evolving. This rapid growth has led to a high demand for individuals who can produce tomorrow's technologies.

Choose AS Computer Science and you will need to think creatively, innovatively, analytically, logically and critically. You will also need the ability to analyse problems in computational terms through practical experience of solving such problems, including writing programs to do so.

In the same way that IT has developed, electronics has become an equally integral part of our daily lives.

Study AS Electronics and you will begin to recognise its importance in your own life and in today's technological society. This course will ensure that you have the electronic and mathematical knowledge and electronic engineering skills to solve problems both now and in the future.

ENTRY REQUIREMENTS

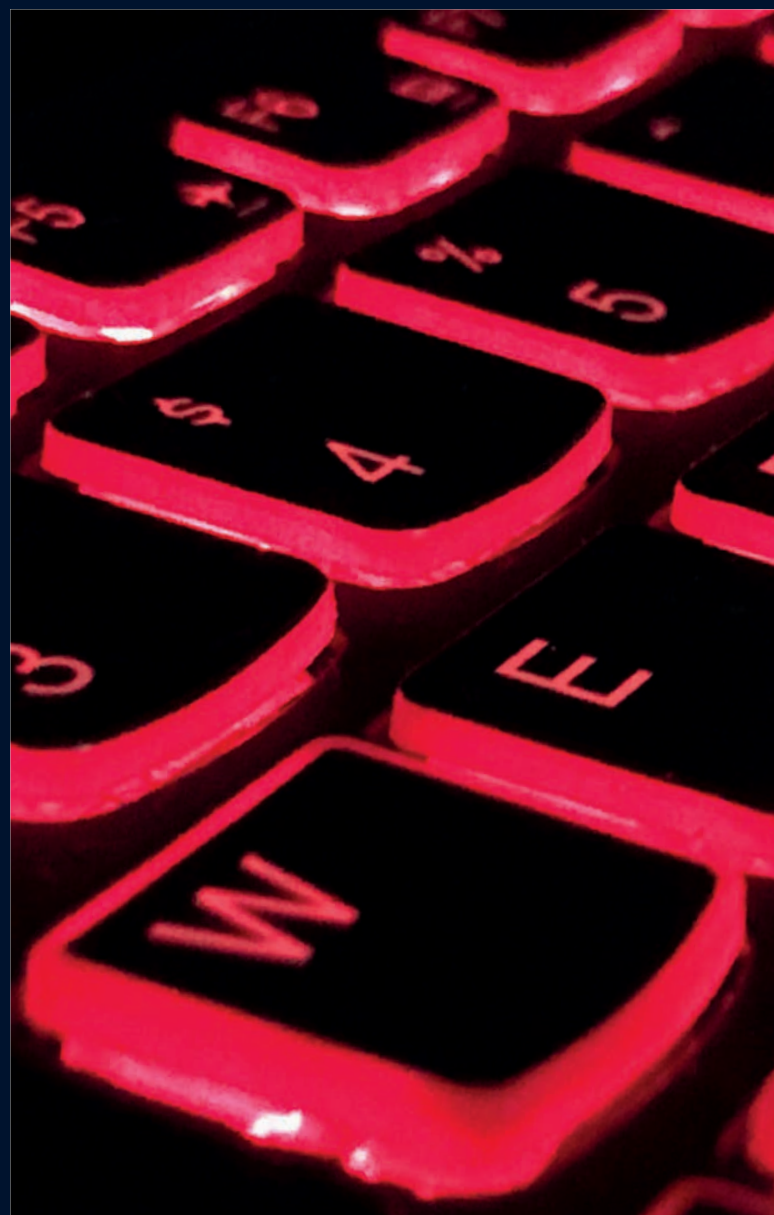
All AS students should have a minimum of 5 GCSEs at Grades A* – C. Additionally, learners will be required to have a minimum GCSE grade as indicated below:

Computer Science - English/Welsh (first language) B and Maths or Numeracy B

Electronics - Science B and Maths or Numeracy B

Please check the website for each individual subject's entry criteria.

“THE COMPUTER WAS BO PROBLEMS THAT DID NO





**BORN TO SOLVE
NOT EXIST BEFORE."**

- BILL GATES



THINKMORE. LEARNMORE. BEMORE.

MEET THE LECTURERS

COMPUTER SCIENCE

IAN LEWIS: MSc, BSc (Hons), PGCE

With a background working in the engineering industry, Ian graduated from Glamorgan University with a degree in Information Technology and has recently completed a Master's Degree in Cyber Security. He has been lecturing at Pembrokeshire College for 15 years, is Programme Leader for the HND Applied Computing course and is a qualified ESTYN Peer Inspector.

SARAH WILLIAMS: BSc (Hons), PGCE

Sarah graduated from the University of Essex with a BSc in Computer Science. Passionate about encouraging more women into STEM subjects, she chose to qualify as a teacher. With 20 years teaching experience, she now specialises in teaching programming and pure mathematics.

ELECTRONICS

JASON POINTER: BEng (Hons), PGCE

After graduating with a degree in Electrical/Electronic Engineering from Swansea University, Jason moved into teaching. He has been heavily involved with Engineering Scheme Wales competitions which are designed to get students to work with engineers at local companies.

DR. RAJNI BANSAL: BSc, MSc, PhD, PGCE

Rajni has a PhD in Nuclear Physics and has had eleven of her research papers published in international journals. After three years teaching in a prestigious college in India she now joins our A-level Electronics team inspiring our students.

ENGLISH LANGUAGE & LITERATURE

ENGLISH LITERATURE

FRENCH, SPANISH & WELSH (2ND LANGUAGE)

There are lots of good reasons to choose to study a language as one of your A-level subjects.

Being able to speak multiple languages can have many benefits socially as well as giving you an edge in today's global business economy.

Studying a foreign language will not only enrich your global cultural awareness but can also improve your comprehension and critical thinking skills - both of which are useful for many different degree courses and are also sought after by businesses.

Choose English Literature or Language and Literature and you will immerse yourself in exploring the complexities and richness of the English language.

ENTRY REQUIREMENTS

All AS students should have a minimum of 5 GCSEs at Grades A* – C. Additionally, learners will be required to have a minimum GCSE grade as indicated below:

English Language & Literature - English Language & Literature B

English Literature - English Language & Literature B

French - French B and English/Welsh (first language) B

Spanish - Spanish B and English/Welsh (first language) B

Welsh (2nd Language) - Welsh B

Please check the website for each individual subject's entry criteria.

“A DIFFERENT LANGUAGE DIFFERENT VISION OF LIFE”



GE IS A
IFE."

- FEDERICO FELLINI



MEET THE LECTURERS

ENGLISH LANGUAGE & ENGLISH LITERATURE

CAROLINE FULLER: MA, BA (Hons), PGCE

Caroline graduated with a BA (Hons) in English and then went on to complete an MA. A keen reader and writer she enjoys sharing her passion for literature with her students.

REBECCA MCKAY: BA (Hons), PGCE

After graduating from Cardiff University, Rebecca chose to teach. She enjoys the diversity of teaching both English Literature and the combined Language and Literature A-levels, supporting the critical and creative skills of students.

TERENCE COOK: BA (Hons), PGCE

Having worked for various media production companies in stage and set construction, Terence began teaching English A-level in 2002 and also taught A-level Media Studies and GCSE English. After taking a break he has returned to deliver English Language and Literature.

FRENCH

NATHALIE REES: PGCE

Nathalie graduated with a degree in English from the University of Bordeaux III France and spent a year in Pembrokeshire as a French Assistant. She subsequently did a Masters in Teaching French as a Foreign Language in the University of Bordeaux.

SPANISH

BEATRICE FORMAGGI: BA (Hons), PGCE

Beatrice studied Foreign Languages at the University of Pisa [Italy]. She taught foreign languages in Italy for three years before moving to Wales where she has taught in secondary schools and colleges.

WELSH 2ND LANGUAGE

HANNAH SALMON: BA (Hons), PGCE

After graduating from Cardiff Metropolitan University with a degree in Educational Studies and Welsh, Hannah went on to teach GCSE and A-level Welsh as a second language in various schools before joining the College.

THINKMORE. LEARNMORE. BEMORE.

MATHEMATICS

FURTHER MATHEMATICS

If you are naturally gifted with numbers then A-level Mathematics and Further Mathematics may be for you.

The study of Mathematics is integral to everything around us. New mathematical theories are being discovered daily and it is these theories that often form the basis of scientific discoveries and inventions.

For those with a real passion for the subject then A-level Further Mathematics will allow you to acquire an even greater level of understanding.

If you are interested in pursuing a degree in Physics, Engineering or Economics then having an A-level in Mathematics will be of real benefit.

ENTRY REQUIREMENTS

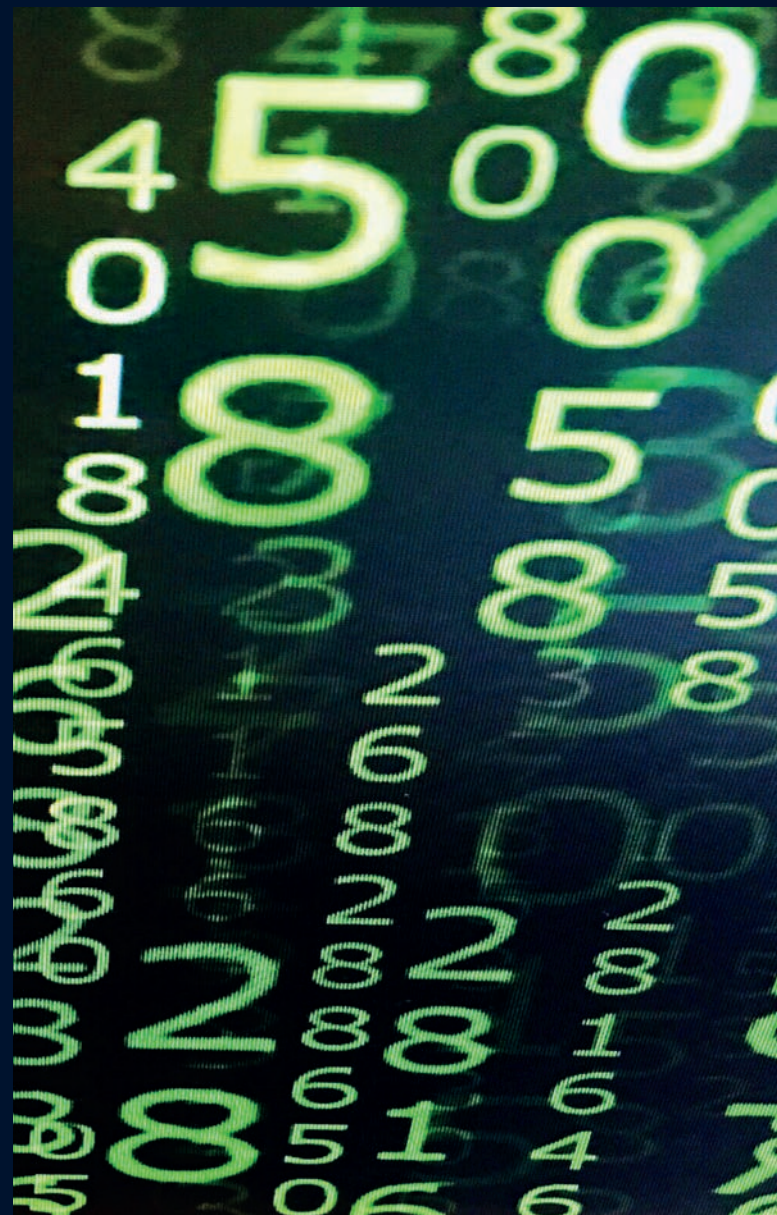
All AS students should have a minimum of 5 GCSEs at Grades A* – C. Additionally, learners will be required to have a minimum GCSE grade as indicated below:

Mathematics - Maths (From Higher tier - intermediate with tutor agreement only) and Numeracy B

Further Mathematics - Maths and Numeracy A (also need to study AS Level Mathematics)

Please check the website for each individual subject's entry criteria.

**“MATHEMATICS IS, IN ITSELF,
POETRY OF LOGICAL IDEAS”**



T'S WAY, THE
EAS."

- ALBERT EINSTEIN



MEET THE LECTURERS

MATHEMATICS & FURTHER MATHEMATICS

ELAINE SINCLAIR: BSc (Hons), PGCE

Elaine studied Mathematics at Birmingham University. She taught Maths in Secondary Schools before spending two years teaching at a college in Ghana with VSO [Voluntary Service Overseas]. Before joining Pembrokeshire College she worked at an educational charity supporting global issues through the curriculum.

TONY ANDREWS: BSc (Hons), NPQH, PGCE

Tony graduated from the University of London, King's College with a BSc in Mathematics. He has over 36 years teaching experience and has been an examiner for GCSE and A-level for some 30 years. His roles have included Head of Mathematics, Maths Adviser for Pembrokeshire, Deputy Headteacher and Headteacher.

SARAH WILLIAMS: BSc (Hons), PGCE

Sarah graduated from the University of Essex with a BSc in Computer Science. Passionate about encouraging more women into STEM subjects, she chose to qualify as a teacher. With 20 years teaching experience, she now specialises in teaching programming and pure mathematics.

ANGHARAD MILES: BSc (Hons), PGCE

After graduating with a degree in Neuroscience from University College London, Angharad returned home to Pembrokeshire to pursue a career in teaching Biology, Chemistry and Mathematics.

EMMA EMBERSON: BSc (Hons), PGCE

Emma studied Applied and Agricultural Zoology at the University of Leeds and spent three months in the rainforest studying biodiversity. Emma has been teaching maths and sciences for over 20 years. Her roles have included Head of Year and SEN departmental coordinator.

MARION SCOTT: BEng (Hons), PGCE

Marion graduated with a BEng in Manufacturing Engineering and Management and has worked in the UK, USA and Germany. Marion has been teaching GCSE and A-level Maths for over 20 years, her favourite A-level topic is surds.

GEOGRAPHY HISTORY RELIGIOUS STUDIES

These humanities based subjects will give you a solid foundation of knowledge if you are looking to pursue a degree programme in one of these, or a related, subject.

Study AS-level Geography and you will be encouraged to apply geographical knowledge, theory and skills to the world around us. This will enable you to develop a critical understanding of the world's people, places and environments in the 21st Century.

Choose History and you will study some of the most significant events of the past and uncover how some of these events have shaped the world in which we live today.

Finally, pick Religious Studies and you will gain a fascinating insight into religion and its place in the wider world. You will undertake an in-depth study of one of the six major world religions as well as covering religion and ethics and the philosophy of religion.

ENTRY REQUIREMENTS

All AS students should have a minimum of 5 GCSEs at Grades A* – C. Additionally, learners will be required to have a minimum GCSE grade as indicated below:

Geography - Geography B and English/Welsh (first language) B and Maths or Numeracy B

History - History B and English/Welsh (first language) B

Religious Studies - Religious Studies B and English/Welsh (first language) B

Please check the website for each individual subject's entry criteria.

"WE ARE NOT MAKERS OF WE ARE MADE BY HISTOR



OF HISTORY.
ORY.”

- MARTIN LUTHER KING, JR



MEET THE LECTURERS

GEOGRAPHY

POWELL STRONG: MSc, PGCE

After graduating from Bangor University's School of Ocean Sciences in 1991, Powell worked as a coastal scientist, specialising in marine mammal studies but also working for a range of statutory and non-governmental organisations. Powell started lecturing on the Coastal Zone and Marine Environment Studies BSc course at Pembrokeshire College in 1997 but maintained his links with industry. Powell has published work in the field of human geography.

HISTORY

KERI KENNY: BA (Hons), PGCE

Keri graduated from the University of Wales with a BA joint honours in English and History. She lectured at the University, then went on to teach at college level. Keri has taught overseas and online A-level History and is an examiner for AQA. Keri is currently working with former university lecturers on a heritage trail in South Wales.

RELIGIOUS STUDIES & HISTORY

SARAH-KAY TUSHINGHAM-FORD: BA (Hons), PGCE

After graduating with a degree in Religious Studies, Philosophy and Humanities from Lampeter University, Sarah-Kay went into teaching in Pembrokeshire schools. Sarah-Kay has been working with WJEC for several years as an examiner for GCSE, AS and A2 level papers.

THINKMORE. LEARNMORE. BEMORE.

PHYSICAL EDUCATION

The Physical Education A-level isn't just for those who love sport. As part of this course you will learn about health, well-being and the human body.

This is a demanding course that will cover elements of biology, physics, sociology and psychology. Practical sessions form only a small part of this A-level programme which instead focuses on building knowledge through theory-based sessions.

To be successful on this course you will need to have a real interest in discovering the science behind sport. Successful completion of this programme can be the stepping stone to a wide variety of interesting careers including sports coaching, sports development, physiotherapy or teaching.

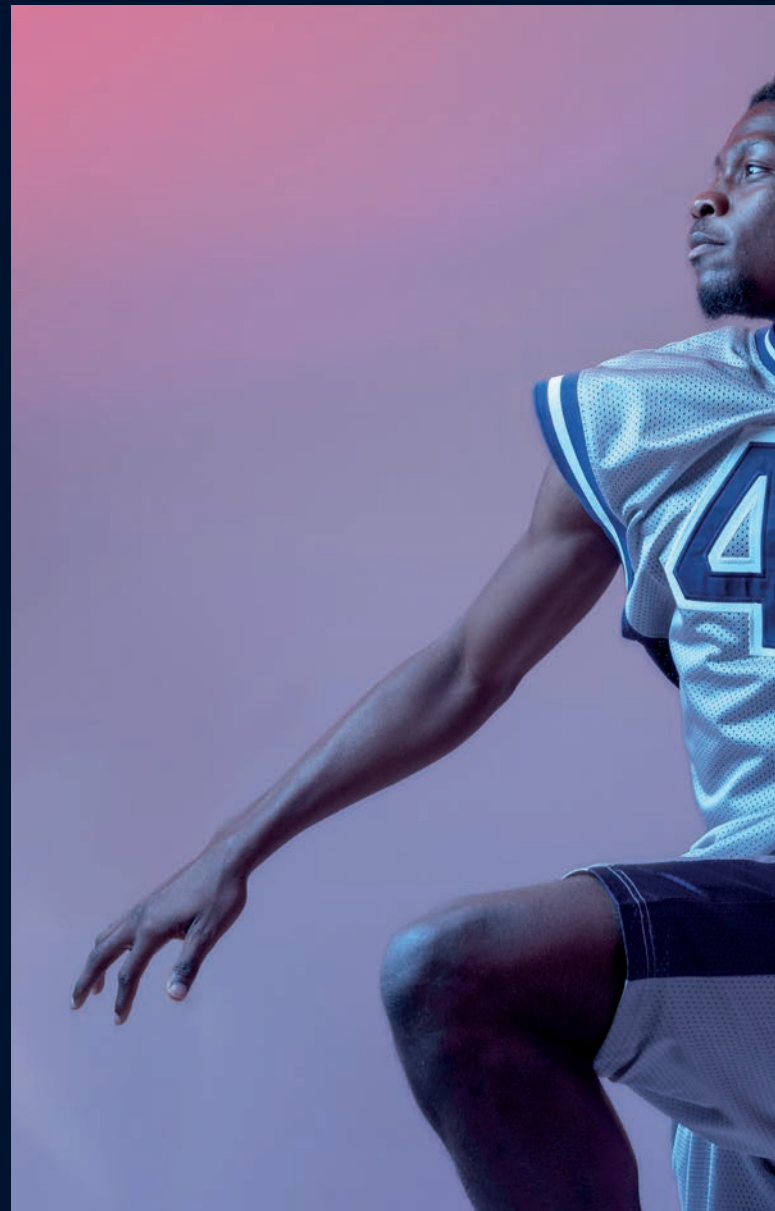
ENTRY REQUIREMENTS

All AS students should have a minimum of 5 GCSEs at Grades A* – C. Additionally, learners will be required to have a minimum GCSE grade as indicated below:

Physical Education - PE B or Science B (if PE not taken)

Please check the website for each individual subject's entry criteria.

**“WHEN YOU’VE GOT SOM
THERE’S NOTHING GREAT**





**SOMETHING TO PROVE,
EASIER THAN A CHALLENGE.”**

- TERRY BRADSHAW



MEET THE LECTURERS

PHYSICAL EDUCATION

CLAIR OWEN: BEd (Hons), PGCE

Clair qualified as a Physical Education Specialist in 1995 at Trinity College Carmarthen. She is actively involved in coaching and performing in a number of sports to international level. Clair believes that given the right motivation everyone can reach their potential.

THINKMORE. LEARNMORE. BEMORE.

PSYCHOLOGY SOCIOLOGY

Both Psychology and Sociology are fascinating subjects which are interested in the scientific study of people. Whilst these subjects often go hand-in-hand there are significant differences between them.

Study the A-level in Psychology and you will develop skills in psychological research, information technology, communication and critical thinking.

Choose to study Sociology and you will delve into a broad range of interesting topics including social exclusion, poverty, crime, religion and much more.

These diverse and fascinating subjects deal with how we perceive the everyday world and will help you to develop a greater understanding of human emotions, relationships and behaviours.

ENTRY REQUIREMENTS

All AS students should have a minimum of 5 GCSEs at Grades A* – C. Additionally, learners will be required to have a minimum GCSE grade as indicated below:

Psychology - English/Welsh (first language) B and Maths or Numeracy B

Sociology - English/Welsh (first language) B

Please check the website for each individual subject's entry criteria.

**“THE MIND IS NOT A VESSEL
FILLED, BUT A FIRE TO BE**



SEL TO BE
BE KINDLED."

- PLUTARCH



THINKMORE. LEARNMORE. BEMORE.

MEET THE LECTURERS

PSYCHOLOGY

CHARLIE ALEXANDER: BA (Hons)

Charlie studied Psychology and Education at Cardiff University. She has been teaching Psychology at the College for 10 years and also teaches across ESQ skills subjects.

KATE WILLIAMS: MSc (Hons), BA (Hons)

Kate studied Psychology at Liverpool John Moores University and then carried out her Masters degree at Cardiff University. She has worked within the NHS and Social Services and has taught across both Health and A-level faculties for the past 25 years.

SARAH ARCHER: BSc (Hons)

Sarah studied Applied Psychology at UWTSD. Alongside her studies she worked at Magstim, pioneers of Transcranial Magnetic Stimulation (TMS). After her degree she worked for Hywel Dda University Health Board Mental Health department based at St. David's hospital in Carmarthen before moving into teaching.

SOCIOLOGY

CHRIS URACK: MA, BSc (Hons)

Chris graduated from SOAS University of London (the School of Oriental and African Studies). Before working at the College Chris worked for Global Connections, an educational charity that raised awareness about global issues in west Wales. He is originally from Australia and has travelled extensively and worked in different countries all over the world.

LOGAN HUGHES: BSc (Hons), MSc

Logan graduated with a BSc (Hons) in Sport and Physical Education at Cardiff Metropolitan University focusing on ethics and sociology in sport. He then studied a MSc in Sociology and Ethics of Sport researching into sociological culture in sport and masculinity.

CLAIRE STEEL: BSc (Hons), PGCE

Claire studied Sociology and Criminology at Cardiff University followed by her PGCE. After studying, she taught in a SEN autism specialist school in Cardiff before moving back to Pembrokeshire and has taught here for over eight years. Alongside teaching, Claire also works as an Independent Foster Panel member for Pembrokeshire Social Services.

SAY HELLO!



pembrokeshire.ac.uk | 0800 9 776 788 | admissions@pembrokeshire.ac.uk

Disclaimer

The College takes all reasonable steps to provide the educational services and courses as described in this prospectus. Details are correct at the time of going to press but may be subject to change without prior notice. Courses will not run if student numbers are insufficient. The College has the right to refuse individuals entry to courses in certain circumstances. Prospective students may be advised of more suitable alternatives, if appropriate.