



COLEG Sir Benfro
Pembrokeshire COLLEGE

FULL-TIME COURSES

2022-2023



A-levels | Diplomas | Apprenticeships

THINKMORE. LEARNMORE. BEMORE.

YOUR JOURNEY STARTS HERE



Whatever, you want to be, at Pembrokeshire College our aim is to ensure that you receive an exceptional learning experience.

At College you will focus on a subject that really interests you from sustainable design to mechanical engineering. With industry standard facilities, and teaching staff with real industry experience, we are dedicated to unlocking your potential and equipping you with the skills and experience you will need to progress to further study or into employment.

Once you have made the decision to join Pembrokeshire College you will be treated like an adult. We will provide you with the best possible teaching, care, support and guidance to help you along the way and enable you to fulfill your ambitions. In return, we expect you to strive for 100% attendance, to commit to your course and to take full advantage of all the opportunities presented to you.

I look forward to welcoming you to Pembrokeshire College.

Dr Barry Walters

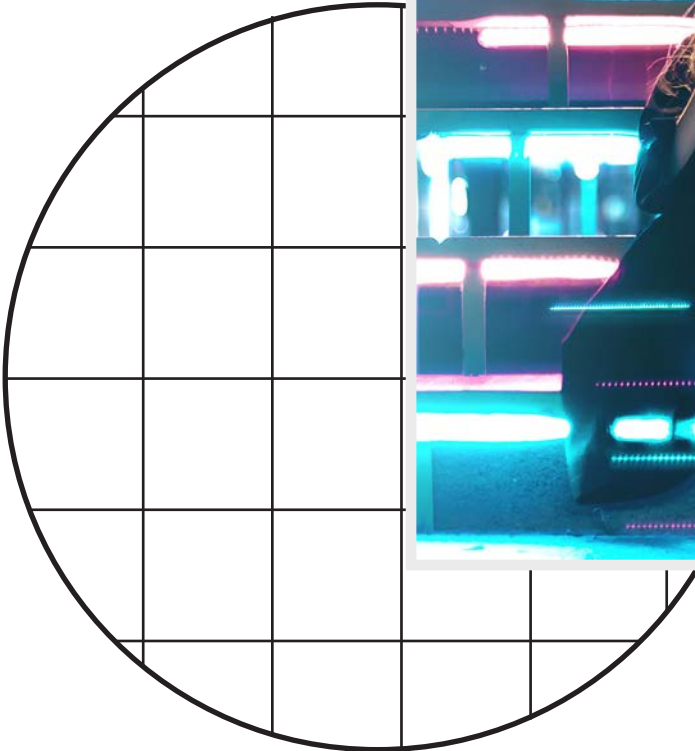
Principal, Pembrokeshire College

MAE'R LLYFRYN HWN AR GAEL YN GYMRAEG.
THIS BOOKLET IS AVAILABLE IN WELSH.



GET INDUSTRY READY

THE WORLD IS YOUR OYSTER



“Education is the most powerful weapon which you can use to change the world”

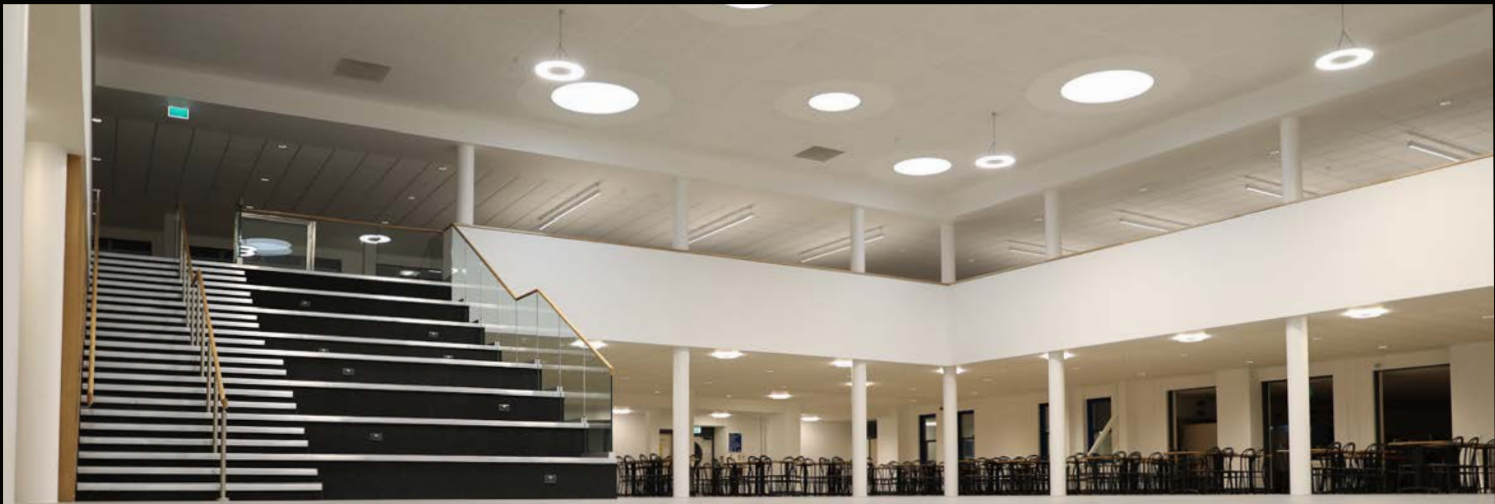
- Nelson Mandela

Imagine yourself in ten years time. What will you be doing, where will you be living? Do you have a desire to make a difference to your life and others? Maybe you are looking for a fulfilling profession that will require specialist knowledge. Enrolling on a course with us is a good place to start. The College offers 27 A-levels and over 70 full-time vocational courses giving you a huge variety of subjects and learning styles to choose from.

BEST TEACHING STAFF IN THE COUNTY

We employ teaching staff who have specialist academic post-16 qualifications and real industry expertise. This combination ensures that you receive high quality teaching that is both engaging and stimulating, guaranteeing you the best possible learning experience. Choose from a diverse range of subjects from the arts and humanities to engineering and hospitality or a wide range of science and social science subjects.

THINKMORE. LEARNMORE. BEMORE.



WHY CHOOSE TO STUDY AT COLLEGE?

Choice

27 A-level subjects and over 70 full-time courses.

Distinctions

In 2020 35% of Extended Diploma learners achieved Distinction/ Distinction* grades (equivalent to three A*-A grades at A-level).

University Progression

Over 200 Level 3 learners progressed to university in 2021

State-of-the-Art Facilities

Some of the best learning resources in Wales.

Work Experience

To get you ready for the workplace you'll undertake work experience placements or work on real world briefs.

Exceptional Support

All learners have access to a comprehensive range of support services.

An Extensive Transport Network

Our transport network runs the length and breadth of the county making it easy for you to get to College.

THINKMORE. LEARNMORE. BEMORE.

GIVING YOU THE EDGE



VOCATIONAL DIPLOMAS

Our vocational diplomas are an alternative to A-levels and are accepted by many universities for entry onto degree programmes. They are practical in their design and generally focus on a specific pathway e.g. health or engineering. Many learners progress straight into employment following successful completion of their chosen diploma route. Some also choose to study an A-level subject alongside their Diploma depending on what they are hoping to do in the future.

STRETCH AND CHALLENGE

Our More Able and Talented programme supports learners who show a particular talent or aptitude be it musical, performance, enterprise or work-related, to support and nurture their aspirations and give them an opportunity to develop these skills. There will be a combination of tasks in the classroom, competitions and extra-curricular activities to encourage and to inspire.

GO THAT EXTRA MILE

Enrichment activities give you an opportunity to learn new skills and gain wider experiences. The Employment Bureau is a College service that will help you find work experience, volunteering opportunities with local organisations and charities, and will even help you with interview techniques and CV writing.

GET COMPETITIVE

We encourage learners to compete in skills competitions at local, regional and national levels. Many learners excel at these competitions and many have competed in WorldSkills UK. This is a great way to make your future job or university application stand out from the crowd.

THINKMORE. LEARNMORE. BEMORE.

GET INDUSTRY READY



PREPARING YOU FOR YOUR DREAM CAREER

Employers are looking for more than just qualifications. They want individuals who can work as part of a team, have great communication skills, are enthusiastic, have a positive attitude and are willing to learn the skills their employer needs to make their business grow.

As part of your course you may be required to undertake work placements. This is a great opportunity for you to showcase your skills to local employers.

Stand out from the crowd

All learners are also able to access the Employment Bureau. The Bureau is open daily and the friendly staff will help you to create a CV and search for job vacancies as well as helping you to prepare for interviews.

MAKING YOU JOB READY

We frequently work alongside local employers to ensure we are equipping you with the skills they are looking for. The involvement of employers varies from course to course but can include:



Working alongside guest chefs in our commercial kitchens.



Undertaking work placements in the NHS.



Work experience at Folly Farm, Manor House Park and many more.



Guest talks from the RAF, Army, Royal Navy and Chiltern Academy.



Work experience in a wide variety of childcare and healthcare settings.



Working with companies in the oil, gas, renewable energy and mechanical sectors.

THINKMORE. LEARNMORE. BEMORE.

GET INDUSTRY READY

EMPLOYER LINKS

ALLT YR AFON - BLUESTONE - BURNS NUTRITION - CARREG CONSTRUCTION
CEREDIGION COUNTY COUNCIL - DRAGON LNG - ELLIOTS HILL - FOLLY FARM
GGT THOMAS - HEATHERTON - HYWEL DDA UNIVERSITY HEALTH BOARD
MAINSTAY MARINE - MANOR PARK - PARK HOUSE CARE
PEMBROKESHIRE COAST NATIONAL PARK - PEMBROKESHIRE COUNTY COUNCIL
PEMBROKESHIRE ROAD SAFETY TEAM - THE RETREATS GROUP - RHYAL ENGINEERING
SLEBECH PARK - ST DAVIDS ASSEMBLIES - ST DAVIDS CARE IN THE COMMUNITY
ST BRIDES SPA HOTEL - THE GROVE - THE PORT AUTHORITY MILFORD HAVEN - VALERO

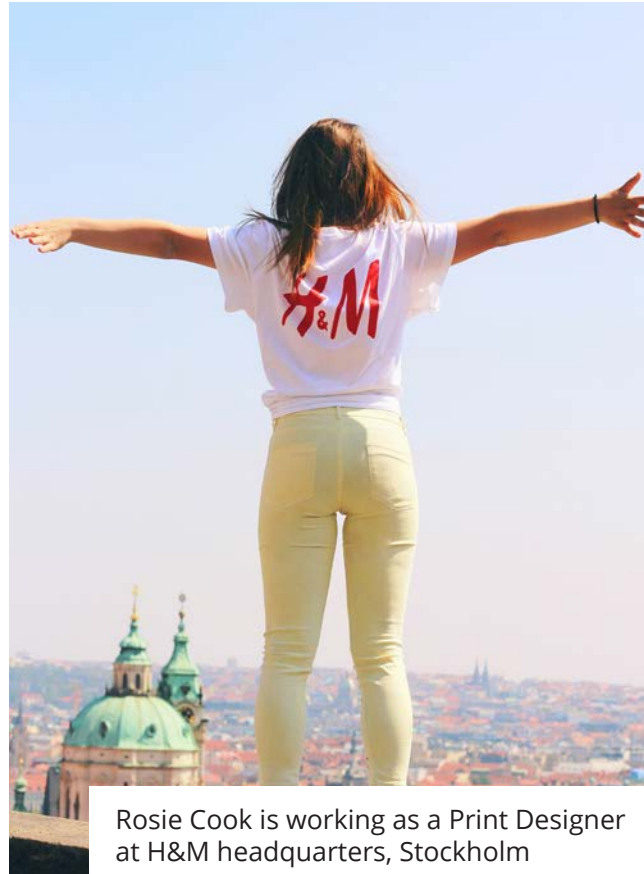
THINKMORE. LEARNMORE. BEMORE.

GET INDUSTRY READY

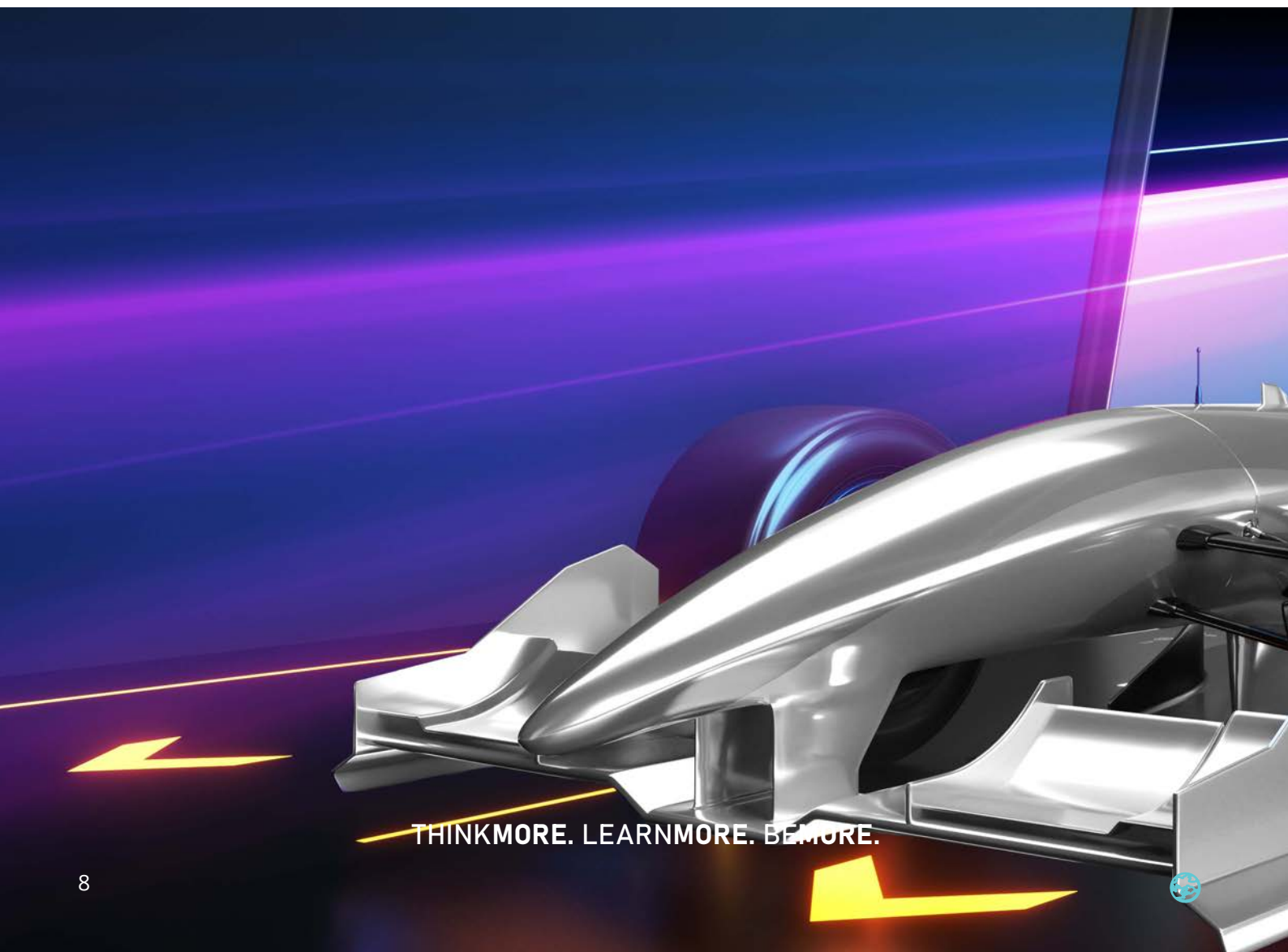
YOU'RE INDUSTRY READY

the SUPERVET

Kaitlynne Cutajar undertook a year-long placement
at Professor Noel Fitzpatrick's Supervet practice



Rosie Cook is working as a Print Designer
at H&M headquarters, Stockholm



THINKMORE. LEARNMORE. BE MORE.



GET INDUSTRY READY

THE DYSON INSTITUTE

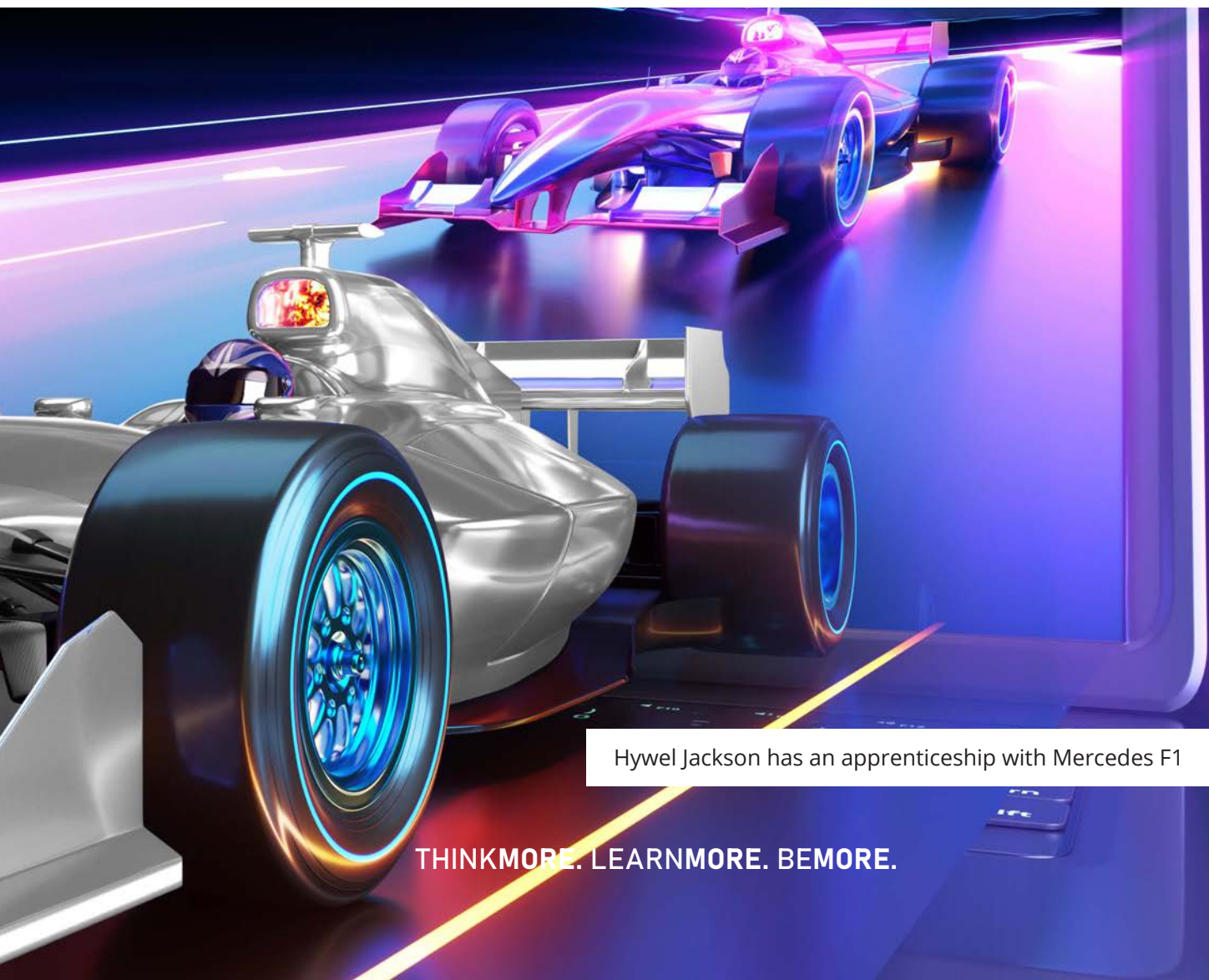
Oliver McIntosh is studying at
the Dyson Institute



Ellis Elliott is working for Google



Former learners are working at the BBC in various roles
including as software engineers and in the costume
department



Hywel Jackson has an apprenticeship with Mercedes F1

THINKMORE. LEARNMORE. BEMORE.

GET INDUSTRY READY

OXBRIDGE SUCCESS 2021

AMAZING A-LEVEL RESULTS

In September 2021, College learners secured 11 Oxbridge interviews, with two full-time learners and one federation learner progressing to Cambridge.

University of Cambridge:

History of Art
Engineering
Philosophy

Cambridge bound:

Imogen Grimes, (A*A*AA), will be reading History of Art, and Samuel Rummery will be reading Engineering after securing A*A* and A* in EPQ alongside three A* grades last year. With an A* in Sociology alongside outstanding A* results from her base school of Milford, federation learner Izzy-May Solomon progresses to read Philosophy.



GET INDUSTRY READY

27 A-LEVEL SUBJECTS

BIOLOGY | BUSINESS STUDIES | CHEMISTRY | COMPUTER
SCIENCE | DRAMA | ECONOMICS | ELECTRONICS | ENGLISH
LANGUAGE & LITERATURE | ENGLISH LITERATURE |
FINE ART | FRENCH | FURTHER MATHS | GEOGRAPHY |
GOVERNMENT & POLITICS | HISTORY | LAW | MATHEMATICS
MEDIA STUDIES | MUSIC | PHOTOGRAPHY | PHYSICAL
EDUCATION | PHYSICS | PSYCHOLOGY | RELIGIOUS STUDIES
SOCIOLOGY | SPANISH | WELSH - 2ND LANGUAGE |
WELSH BACCALAUREATE

SEE OUR A-LEVEL BROCHURE TO FIND OUT MORE

THINKMORE. LEARNMORE. BEMORE.

GET INDUSTRY READY

STATE OF THE ART FACILITIES

NEW: ATRIUM FACILITIES - including lots more space for socialising and studying



CAMPUS6 FACILITIES

Biology, Chemistry and Physics Laboratories | IT Suites | Fitness Suite | Spacious Classrooms | Commercial Salons and Treatment Rooms | Commercial Restaurant | Sports Hall | Social Spaces



THINKMORE. LEARNMORE. BEMORE.

GET INDUSTRY READY

NEW: ENGINEERING BUILD - ready for September 2022



NEW: SUPPORT HWB

Our new support HWB brings together all of our support services for learners to access including: learning coaches, pastoral support, student finance, enterprise, learner voice, plus much more.



THINKMORE. LEARNMORE. BEMORE.

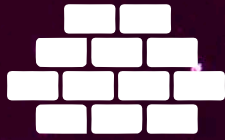
GET INDUSTRY READY

MAIN CAMPUS FACILITIES

We provide a wide variety of facilities on campus to ensure a smooth and enjoyable learning experience for our learners.



THEATRE & DANCE
STUDIOS



CONSTRUCTION
WORKSHOPS



RENEWABLE
ENERGY CENTRE

BELIEVE

CREATE



ART & DESIGN
STUDIOS



RECORDING
STUDIO



COMMERCIAL
KITCHENS &
RESTAURANT



APPLE MAC
SUITES



EMPLOYMENT
BUREAU



GYM &
SPORTS HALL

PASSION

INSPIRE



HAIR & BEAUTY
SALONS



ON-SITE
NURSERY



STARBUCKS



LEARNING
RESOURCE CENTRE



DARK ROOM &
WHITE ROOM



LITTLE FRESH

MOTIVATE

THINKMORE. LEARNMORE. BEMORE.



GET INDUSTRY READY

TRANSITION & SUPPORT

At Pembrokeshire College we provide an inclusive learning environment offering support to all learners.

KEEPING LEARNERS ON TRACK

Each learner is assigned to a Personal Tutor to ensure that they receive a consistent and appropriate level of support, advice and guidance. This can be in group sessions or on an individual basis. All learners agree to 100% attendance and sign a learner agreement at the outset of their course which includes expectations and behaviour.

AN INCLUSIVE ENVIRONMENT

The College is committed to providing an inclusive education for all learners with learning difficulties and/or disabilities. We have strong links with specialist provider schools, employers, charities and other specialist organisations to make the transition process as smooth as possible. Amongst other things, we are able to support with: Assistive Technology, Autism, Dyslexia, Learning Difficulties, Physical Disabilities, Sensory Impairments and General Well-being, plus much more.

EQUALITY AND SUPPORT

The College adopts a highly inclusive and integrated approach to supporting learners with additional learning needs, which starts while they are in school. Comprehensive transition planning arrangements are in place and are undertaken in partnership with a wide range of specialist agencies, including a specialist Careers Wales Adviser.

The College's Learning Support team work closely with ALENCO's in schools to assist with transition arrangements. These members of staff attend school reviews, meet learners and parents or carers at the school, interviews or open events, and meet learners on their transition days. Strong transition arrangements exist between the secondary schools and the College to make transition as smooth as possible.

Individual 1:1 tailored support is also provided by the College's Cynnydd team to further support the transition into College (Cynnydd is a regional ESF funded project).

SPECIALIST SUPPORT ASSESSOR

A Specialist Support Assessor will undertake exam access arrangements, dyslexia profiling and screening to determine the nature and level of support needed. Learning Support is provided by over thirty Learning Support Assistants and two Communication Support Workers.

SAFEGUARDING AND WELL-BEING

The College takes safeguarding and well-being very seriously and has an established team which includes the following support and services: Designated Senior Person, Safeguarding and Well-being Officers, Student Nurse, Finance Officer and an Inter-denominational Chaplain. The team also work alongside external agencies to provide referrals, advice, guidance and support.

LOOKED AFTER YOUNG PEOPLE (LAYP) AND YOUNG CARERS

The College's Senior Designated Person is responsible for providing transition, care and support services for LAYP and young carers. If you are in care, a care leaver or a young carer please contact Maxine Thomas: ma.thomas@pembrokeshire.ac.uk for advice and support or any further information prior to applying to College

THINKMORE. LEARNMORE. BEMORE.

GET INDUSTRY READY

ONSITE SUPPORT FACILITIES



CAREERS



COLLEGE
NURSE



COMMUNICATION
SUPPORT
WORKERS



COUNSELLOR



CYNNYDD
TEAM



FINANCE
ADVISOR



LEARNING
COACHES



LEARNING
SUPPORT
ASSISTANTS



SAFEGUARDING,
WELL-BEING &
DISCIPLINARY
OFFICERS



SKILLS SUPPORT
ADVISERS



SPECIALIST EXAM
ASSESSOR



PASTORAL
COACHES



UCAS -
SEREN HUB



WORK PLACEMENT
OFFICER



SAFEGUARDIANS



YOUTH WORKER

THINKMORE. LEARNMORE. BEMORE.

HELPING YOU REACH YOUR GOALS

MONITORING PROGRESS

Parents/Carers evenings are held during the academic year where the progress of learners can be discussed. Parents/Carers are also able to access the Learner Profile which allows monitoring and follow up in 'real time'. Parents and carers can have access to this information with permission from the learner.

TARGET SETTING

Learners are set learning targets through individual tutorials and through learning agreements and action plans. All targets are recorded on the Learner Profile and are monitored through the tutorial process. Additional support is provided by the Learning Coaches for the achievement of targets.

100% ATTENDANCE

All learners agree to 100% attendance and a code of conduct at the outset of their course which leads to a sense of shared responsibility. A strong but supportive Learner Disciplinary Policy is in place and there is a dedicated resource to work with any learner who is at risk of disengagement. Attendance is monitored electronically at every lesson and any unauthorised absences are followed up immediately.

BRUSH UP ON YOUR ENGLISH, MATHS & WELSH

CRITICAL SKILLS: MATHS AND ENGLISH

Whether you are looking to go straight into employment or progress to higher level study, English and Maths are viewed by employers and universities as critical skills to have.

Whatever your programme of study, our lecturers and learning support staff are committed to helping you to improve your reading, writing, communication and mathematics skills so you can leave College with the skills you'll need to progress.

IMPROVING YOUR WELSH

All College learners are encouraged to have an appreciation of Welsh language and culture. Learners who have previously completed any learning through the medium of Welsh will be encouraged and supported to maintain and develop those skills.

All learners can access tutorials, essential skills and aspects of their course through the medium of Welsh if they wish to do so.

EXPERIENCE COLLEGE LIFE



Study at Pembrokeshire College and you'll have access to much more than just outstanding staff, IT facilities, classrooms and workshops.

// COLLEGE RESTAURANT & COFFEE SHOP

Run by hospitality learners, the restaurant and coffee shop is open from 9.30am - 1.30pm for coffee and from 12 noon - 1.30pm for lunch serving hearty homemade food at reasonable prices.

// REFECTORY, STARBUCKS & LITTLE FRESH

Whatever time you take your breaks you'll always find somewhere to grab a drink or a snack to fuel your learning!

// STUDY CENTRE

The study centre is equipped with spaces for group work as well as computers, journals and quiet study spaces. Learners can borrow a laptop, on production of an ID card, to continue with their homework or assignments.

// SUPER FAST WIFI

Wherever you are on the campus you'll be able to access super-fast WiFi.

// HEALTHY BODY | HEALTHY MIND

Your health and well-being is super important. You can join one of your Sports Academies or take advantage of discounted student membership in the gym - great for when you need to let off steam between classes.

THINKMORE. LEARNMORE. BEMORE.

GET INDUSTRY READY

OUR COURSES EXPLAINED

A-LEVELS

If you like researching topics, reading about subjects to broaden your knowledge and are good at exams, then A-levels may be the route for you.

Choose to study A-levels at the College and you can choose from 27 AS subjects - the broadest range in the county. If you are interested in studying A-levels, see our A-level brochure to find out more.

VOCATIONAL COURSES

Our vocational courses offer nationally recognised qualifications that equip you for employment in a specific sector. Our Level 3 Extended Diplomas are equivalent to A-levels and allow you to progress to university.

For many subjects, you will be taught in learning environments that replicate those you will find in industry by lecturers who have years of experience within the sector.



APPRENTICESHIPS

This is a work-based learning programme that allows you to earn a wage whilst studying for a qualification and learning practical skills in the workplace. To undertake an apprenticeship you need to find an employer who is willing to support you throughout the qualification. If you do not have an employer, we may be able to help you find one.

Apprenticeships are nationally recognised professional qualifications valued by employers. All apprenticeship programmes include qualifications in literacy and numeracy unless you have already obtained them at school.

ENTRY LEVEL & LEVEL 1

Our Level 1 and Entry Level courses are suitable for you if you don't have any formal qualifications. If you don't get the GCSE grades you had hoped for, then you can start at Entry Level and work your way up.

Some practical courses such as Carpentry, Hospitality and Plumbing require learners to start at Level 1, regardless of their GCSE grades. This is so you can learn the basic skills before progressing to higher levels or an Apprenticeship.

LEVEL 2 & 3

Most of our Level 2 courses require you to have GCSE grades at D and some even require you to have achieved C grades in certain subjects. Entry requirements for each course vary.

After successfully completing your Level 2 programme you could progress onto a Level 3 course, employment or Apprenticeship.

If you achieve five GCSEs at grade C or above (some courses may require you to have achieved B grades in certain subjects) you can go straight in at Level 3 (equivalent to studying A-levels).

All Level 3 programmes are two years in length. On successful completion you can apply to study at university or go directly into employment.

THINKMORE. LEARNMORE. BEMORE.

GET INDUSTRY READY

HOW TO APPLY?



STEP 1 - OPEN EVENING

Attend one of our Open Evenings where you can take a tour of our facilities and speak directly to our lecturers and support team. You can also find information on all our courses on our website: **pembrokeshire.ac.uk**

If you are unsure of which course is right for you, our friendly Advice and Guidance Team are always on hand as well as Careers Wales.

Check out our website for details of upcoming Open Evenings.

STEP 2 - APPLICATION

Apply via our website - search for your course then apply online. You'll need to create an account which will allow you to track your application.

If you need some help completing your application, please make an appointment to see our Admissions team on: **0800 9 776 788**.

STEP 3 - MEET US

Once we have received your application you will be invited to attend one of our information evenings where subject lecturers will give you some more information on the course.

Finally, you will be asked to complete your online enrolment in August where we will check your GCSE results and enrol you onto your course.

THINKMORE. LEARNMORE. BEMORE.

GET INDUSTRY READY

COURSES

On the following pages you'll find a brief overview of the courses that we offer, the job roles that they could lead to and average salaries. Visit our website: pembrokeshire.ac.uk for full course information including the modules studied and entry requirements. If you're not sure which course would be most suitable for you, call our friendly Admissions team on 0800 9 776 788 for some impartial advice and guidance.

JOBS GROWTH WALES+



Jobs Growth Wales+ is a flexible programme focused on helping young people aged 16-18 who are disengaged from learning to reach their full potential and take their first steps into the world of work.

Our programmes aim to give you the skills, qualifications and work experience needed to either get a job or progress to further learning such as a higher level course or an apprenticeship.

You can choose from a variety of subject areas including:

- » **Business and Leisure**
- » **Construction**
- » **Engineering**
- » **Hair and Beauty**
- » **Health Care and Childcare**
- » **ICT**

This programme offers a totally different learning environment and is delivered by a friendly and experienced team who are committed to seeing you succeed.

Contact our admissions team for more information.

THINKMORE. LEARNMORE. BEMORE.



"An Apprenticeship is a proven model for developing a skilled workforce." - Eugene Scalia

EARN AND LEARN WITH AN APPRENTICESHIP

Apprenticeships are available in a growing number of sectors and allow you to earn a wage whilst continuing your education.

As part of an Apprenticeship you will learn on and off the job undertaking a structured programme of training which will lead to a recognised apprenticeship qualification.

On the job training - you will be employed by a company and work alongside more experienced members of staff to learn your trade.

Off the job training - we have a variety of delivery models and some apprenticeships will require you to attend College one day a week to learn the theory. You will also be expected to complete online assessments and assessments in the workplace.

THE FACTS

92% of apprentices in work felt that their apprenticeship had a positive impact on their career.

92% of apprentices said their career prospects had improved.

90% of apprentices remain employed after completing their apprenticeship.

Higher Apprentices could earn £150K more on average over their lifetime compared to those with level 3 vocational qualifications.

LEVELS

LEVEL 2

Foundation Apprenticeship
(Equivalent to five GCSEs)

LEVEL 3

Apprenticeship
(Equivalent to two A-levels)

LEVELS 4 & above

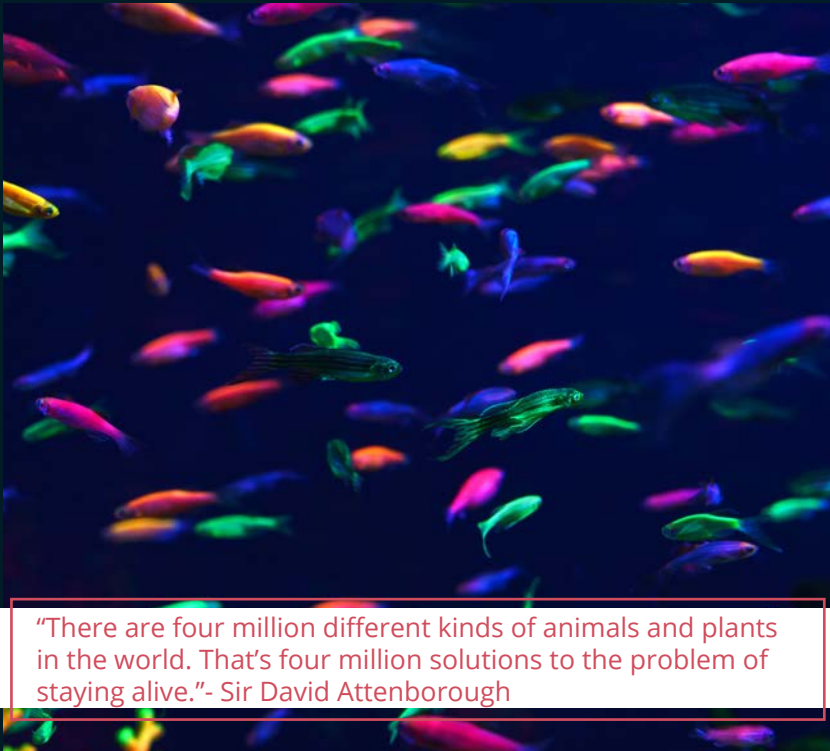
Higher Apprenticeship
(Equivalent to a Higher National Diploma (HND) or Foundation Degree)

To undertake an apprenticeship you will need to be in full-time employment with a business that can support you. The Apprenticeship Matching Service or the College Employment Bureau may be able to help find you an employer.

APPRENTICESHIP PATHWAYS

TITLE	LEVEL
Advice & Guidance	2,3,4
Beauty Therapy	2,3
Business Administration	2,3,4
Childcare	2,3,5
Construction	2,3
Customer Service	2,3
Education	2,3
Engineering	2,3,4
Food & Drink Engineering	3
Hairdressing	2,3
Healthcare	2,3,5
Hospitality	2,3
ILM Management	2,3,4,5
Motor Vehicle	2,3

GET INDUSTRY READY



"There are four million different kinds of animals and plants in the world. That's four million solutions to the problem of staying alive."- Sir David Attenborough

ARE YOU PASSIONATE ABOUT ANIMALS AND PRESERVING THE ENVIRONMENT?

Choose Animal Management and you will have the opportunity to develop hands-on skills by working with a range of small mammals, birds and reptiles. You may also be able to undertake work placements to further enhance your knowledge of domestic, exotic and wild animals.

Choose Countryside and Environment and you will find yourself out and about throughout Pembrokeshire using the environment around us to develop skills in conservation and countryside management.

Whichever pathway you choose you will also be involved in a range of community projects.

FACILITIES

As a Level 1 or 2 Animal Care learner you will have access to fully equipped animal care facilities at our dedicated centre in Withybush where you will gain a broad range of experience handling and caring for a range of small mammals, birds and reptiles.

Our Level 3 Animal Management learners will be based at Folly Farm and have unique access to work alongside the keepers for practical skill development with their wide range of animals.

If your interest lies with protecting the environment, countryside learners will spend a significant amount of time undertaking practical activities with conservation bodies such as the Pembrokeshire Coast National Park and Pembrokeshire County Council.

FUTURE CAREERS

- ANIMAL RETAIL WORKER
- ANIMAL BEHAVIOURIST
- ANIMAL HEALTH CARE
- ANIMAL KEEPER
- BREEDER
- CONSERVATIONIST
- PARK RANGER
- VETERINARY NURSE
- WILDLIFE PARK MANAGER
- ZOOLOGIST

THE FACTS

£15,000 - £20,000

AVERAGE SALARY FOR THOSE WORKING IN AN ANIMAL CARE RELATED PROFESSION

£20,000 - £25,000

AVERAGE SALARY FOR COUNTRYSIDE RANGERS DEPENDING ON EXPERIENCE

£20,000 - £23,000

AVERAGE SALARY FOR A SENIOR VETERINARY NURSE

DID YOU KNOW?

FORMER LEARNERS HAVE GONE ON TO SECURE KEY POSITIONS WITH LOCAL ANIMAL PARKS INCLUDING HEAD PENGUIN KEEPER AND HEAD LION KEEPER AT FOLLY FARM.

COURSES TITLE

LEVEL

Animal Management	3
Animal Care	2
Countryside & Environment	2
Landbased Studies (Countryside Environment)	1
Animal Care	1

THINK**MORE**. LEARN**MORE**. BE**MORE**.



"Art evokes the mystery without which the world would not exist." - René Magritte

EXPLORE AND EXPRESS YOURSELF THROUGH A VARIETY OF CREATIVE MEDIUMS.

As part of your course you will create a portfolio of work to set you on the path either to further study or into employment.

These courses combine practical work, theory and work related projects to give you the expertise needed to succeed in these industries. All our lecturing staff have real industry experience and are professional artists and performers.

Through exhibitions, end of year performances and real live briefs you will gain exposure to the creative arts industry and build a portfolio of materials ready for your next step.

FACILITIES

Whichever one of our creative courses you choose you will benefit from state-of-the-art facilities and the latest industry software including:

- > Dedicated Media Design Studios
- > Light & Dark Studios
- > Silk Screen Studio
- > Intaglio Printmaking Studio
- > Textiles Workshop
- > Apple Mac Suites
- > Animation Studio
- > Film & Audio Recording Equipment
- > Editing Software
- > 250 Seat Theatre & Control Room
- > Dance & Drama Studios
- > Costume & Props Workshop
- > Recording & Live Sound Studios

FUTURE CAREERS

- ADVERTISING
- ACTOR
- ANIMATOR
- ART THERAPIST
- FREELANCE DESIGNER
- GRAPHIC DESIGNER
- ILLUSTRATOR
- MARKETER
- MUSIC PRODUCER
- PHOTO JOURNALIST
- PRODUCT PHOTOGRAPHER
- SET DESIGNER
- SOUND TECHNICIAN

THE FACTS

£40,000 - £60,000

SALARY RANGE FOR A MUSIC PRODUCER

£15,000 - £20,000

SALARY RANGE FOR A GRAPHIC DESIGNER

DID YOU KNOW?

FASHION AND TEXTILES LEARNERS HAVE GONE ON TO STUDY AT UNIVERSITY AND EVEN CARRIED OUT WORK PLACEMENTS WITH DESIGNERS LIKE HUSSEIN CHALAYAN.

COURSES TITLE

LEVEL

BA (Hons) Design Studies..... 6

Diploma Art & Design (Foundation Studies) 3,4

Graphic Design & Illustration 3

Sustainable Design 3

Creative Media & Production 3

Music Performance & Production 3

Performance & Production Arts 3

Art & Design 2



"Business opportunities are like buses, there's always another one coming." - Richard Branson

WOULD YOU LIKE TO START YOUR OWN BUSINESS OR WORK IN A BUSINESS ENVIRONMENT?

Our expert business lecturers can help set you on the right path.

As a business learner you will learn about marketing, finance, events and business decision-making as well as covering topics such as branding and merchandising.

You will also be encouraged to take part in competitions to really get you thinking and to equip you for the challenges that lie ahead in the fast-paced world of business.

From September 2022, Level 3 learners in this area will be have the option to complete an Award in Supply Chain Logistics in addition to their main programme, raising their awareness and helping prepare them for the world of work.

FACILITIES

With state-of-the art classrooms featuring digital projectors, College-wide WiFi and access to Microsoft Office packages, business journals and e-learning resources, from day one you will be part of the hyper-connected business world preparing you for employment in a multitude of roles that form the backbone of today's business environment.

For budding entrepreneurs, our Enterprise Co-ordinator will help you to develop your idea and build a business plan as well as giving you opportunities to test trade. Email them to find out more: enterprise@pembrokeshire.ac.uk

Throughout the course you will also benefit from the destination programme with guest speakers including role models from industry and successful entrepreneurs.

FUTURE CAREERS

- ACCOUNTANT
- ADVERTISING EXECUTIVE
- BUSINESS ANALYST
- EVENTS MANAGEMENT
- FINANCIAL MANAGEMENT
- HUMAN RESOURCES
- LAW
- MANAGEMENT CONSULTANCY
- MARKETING
- PUBLIC RELATIONS
- RETAIL BUYER
- SALES EXECUTIVE

THE FACTS

£30,000 - £40,000

SALARY RANGE OF A MARKETING MANAGER

£30,000 - £40,000

SALARY RANGE OF A HUMAN RESOURCES MANAGER

DID YOU KNOW?

PREVIOUS BUSINESS LEARNERS HAVE TAKEN PART IN BIG IDEAS WALES BUSINESS BOOT CAMP AND SET UP THEIR OWN BUSINESSES WHILST AT COLLEGE.

COURSES TITLE

LEVEL

Business 2, 3



"Being able to help someone learn something is a talent."
- Margaret Riel

HELP CHILDREN TO GROW, DEVELOP AND LEARN.

If you enjoy spending time with children and are looking for a rewarding career where your days are spent helping children to learn, develop and grow then a career in the childcare sector will be for you.

The Level 1 Diploma will develop basic skills and knowledge, enabling you to progress onto Level 2 in either childcare or healthcare.

Level 2 and 3 provides you with the qualifications to work in a range of settings within the childcare industry and is a licence to practice.

Level 3 will also earn you UCAS points to progress to university.

FACILITIES

Childcare learners benefit from large, diverse classroom spaces, suitable for theory lessons as well as practical activities.

Located close to the College's Bright Start Day Nursery, you will gain hands-on experience which forms an integral part of achieving the Level 2 and 3 qualifications to practice.

With the help of the work experience department at the College, you will be placed in a variety of childcare settings throughout the duration of your course, developing professional skills and a wealth of hands-on experience to ensure you are employable upon qualifying.

FUTURE CAREERS

- CHILD-MINDER
- CRÈCHE ASSISTANT
- EARLY YEARS EDUCATOR
- FAMILY SUPPORT WORKER
- NANNY
- NURSERY ASSISTANT
- PRIMARY TEACHER
- PAEDIATRIC NURSE
- SOCIAL WORKER
- TEACHING ASSISTANT

THE FACTS

£20,000 - £39,000

SALARY RANGE FOR A PRIMARY TEACHER

£14,000 - £24,000

SALARY RANGE FOR A NURSERY NURSE

£25,000 - £30,000

SALARY RANGE FOR A SOCIAL WORKER

DID YOU KNOW?

LEARNERS COMPETE IN LOCAL AND NATIONAL COMPETITIONS TO BUILD THEIR SKILLS AND GROW THEIR CONFIDENCE.

COURSES

TITLE	LEVEL
Children's Care, Play, Learning & Development - Practice & Theory*	3
(with Applied Psychology, Applied Human Biology or Welsh Baccalaureate if wishing to progress to university)	
Children's Care, Play, Learning & Development - Core/ Practice & Theory*	2
Introduction to Health, Social Care, Early Years & Childcare	1

*Also available as an Apprenticeship or work based pathway.

THINK**MORE**. LEARN**MORE**. BE**MORE**.



"The people who are crazy enough to think they can change the world are the ones who do." - Steve Jobs

WELCOME TO ONE OF THE WORLD'S FASTEST MOVING INDUSTRY SECTORS.

With constantly evolving technologies, our Computing and ICT courses are designed to equip you with the skills and knowledge that will put you in demand in this fast paced industry.

As a computing learner you'll benefit from a broad range of modules including: web design, systems analysis, systems design, event driven programming, digital graphics and technical support, allowing you to follow any number of degree level courses from Computer Networking to Computer Forensics and Ethical Hacking.

All our computing courses are career-focused with an emphasis on practical training ensuring you gain the skills and knowledge required by today's businesses.

FACILITIES

Computing learners have access to five IT suites along with access to a full range of software as used in industry including Adobe Creative Cloud and Visual Studio. Computing facilities were upgraded to the latest specification during 2018.

You'll also be able to access a range of hardware including wireless routers and printers allowing you to practise setting up networks.

The new Enhanced IT programme is an intensive course which involves a regular work placement and additional study in cyber security, robotics and coding.

From September 2022, Level 3 learners in this area will be have the option to complete an Award in Supply Chain Logistics in addition to their main programme, raising their awareness and helping prepare them for the world of work.

FUTURE CAREERS

- COMPUTER FORENSICS
- CYBER SECURITY
- E-COMMERCE
- GAMES DEVELOPER
- IT CONSULTANCY
- IT SUPPORT
- NETWORK ADMINISTRATOR
- PROJECT MANAGER
- PROGRAMMER
- CODING SOFTWARE MANAGER
- SOFTWARE DEVELOPER
- SYSTEM SUPPORT TECHNICIAN
- WEB DESIGNER

THE FACTS

£40,000+

THE AVERAGE SALARY FOR AN IT PROFESSIONAL IN THE UK

£30,000 - £40,000

SALARY RANGE OF A SOFTWARE DEVELOPER

£30,000 - £40,000

SALARY RANGE OF A GAMES DEVELOPER

DID YOU KNOW?

FORMER LEARNERS HAVE GONE ON TO WORK IN PROFESSIONAL IT ROLES ACROSS THE UK.

COURSES

TITLE	LEVEL
Information Technology	3
Computing & Digital Technology...	2
Computing & Creative Technology.....	2
Information Technology.....	1



"We shape our buildings and thereafter they shape us."
- Winston Churchill

LEARN A TRADE TO SECURE YOUR FUTURE.

Whether you want to learn a trade, or fancy a career as an architect or a civil engineer, our construction courses are a great place to start. We work with a variety of employers, including Lorne Stewart, GGT Thomas & Son, Carreg Construction, W.B Griffiths, WJG Evans and Tree & Sons. We also encourage you to take part in skills competitions to ensure that on completion of your course you have the skills that employers are looking for.

For those interested in construction management, the Level 3 course gives you access to industry standard software such as REVIT and Auto-CAD and will prepare you for a wide range of careers including Architecture, Structural Engineering, Civil Engineering and Surveying.

FACILITIES

The purpose built Construction Centre contains a 380m² brick workshop, two carpentry workshops and a project area with the ability to simulate real world carpentry installations including roofing, hanging doors and assembling staircases. In addition, the joinery machine shop houses industrial standard machinery with CNC capability.

The Construction Centre also houses the Energy Centre where you'll learn about energy efficient technology including solar thermal heating and air and ground source heat pumps.

From September 2022, Level 3 learners in this area will be have the option to complete an Award in Supply Chain Logistics in addition to their main programme, raising their awareness and helping prepare them for the world of work.

FUTURE CAREERS

- ARCHITECT
- BRICKLAYER
- CARPENTER
- ESTIMATOR
- JOINER
- PLUMBER
- QUANTITY SURVEYOR
- SITE MANAGER
- TOWN PLANNER

THE FACTS

£25,000 - £40,000

SALARY RANGE FOR A
CARPENTER

£20,000 - £50,000

SALARY RANGE FOR A
BRICKLAYER

£45,000 - £80,000

SALARY RANGE FOR AN
ARCHITECT

DID YOU KNOW?

FORMER LEARNERS HAVE COMPETED IN COMPETITIONS ACROSS THE GLOBE. A FORMER CARPENTRY LEARNER REPRESENTED TEAM GB IN THE WORLDSKILLS FINALS IN RUSSIA WHERE HE ACHIEVED A MEDALLION OF EXCELLENCE.

COURSES

TITLE	LEVEL
Foundation Degree Construction Management & Technology	5
Construction & Architectural Design	3
Brickwork	1,2
Construction & Building Services Engineering*	2
Building Services Studies*	1

*Learners choose from a combination of two trade areas: electrical/plumbing, brickwork/plastering or carpentry/roofing

THINK**MORE**. LEARN**MORE**. BE**MORE**.



"When you want to know how things really work, study them when they're coming apart." - William Gibson

IF YOU ARE INQUISITIVE AND GOOD AT SOLVING PROBLEMS, A CAREER AS AN ENGINEER COULD BE FOR YOU.

Without engineers the world as we know it would grind to a standstill. Whichever route you choose, your time will be split between learning the theory and spending time in our industry standard workshops learning your trade.

These practical hands-on courses will prepare you for an apprenticeship, progression to university and a career in one of the many strands of the engineering industry.

Throughout the course you'll get to meet with a wide variety of employers to help you choose the career path that is right for you in this exciting sector.

From September 2022, Level 3 learners in this area will be have the option to complete an Award in Supply Chain Logistics in addition to their main programme, raising their awareness and helping prepare them for the world of work.

FACILITIES

You'll have access to industry standard facilities including:

Motor Vehicle: a rolling road, specialist computer diagnostic equipment, camera operated wheel alignment.

Marine: 2hp outboard motors through to a 1,500hp inboard engine as well as a vessel services rig and welding / fabrication equipment.

Welding & Fabrication: an industry standard indoor and outdoor welder / fabrication training facility.

Electrical & Electronics: Virtual Control Room, PLC laboratory with Siemens systems and a PLC target training system, instrumentation, control and an electronics training facility.

Mechanical: lathes, milling machines, surface and cylindrical grinders, forges, sheet metal work equipment, access to specialist software e.g AutoCAD, Solidworks and Inventor.

FUTURE CAREERS

- CAD DESIGNER
- CNC OPERATOR
- DIAGNOSTIC TECHNICIAN
- ELECTRICAL ENGINEER
- ELECTRICIAN
- MAINTENANCE ENGINEER
- MARINE ENGINEER
- MECHANICAL ENGINEER
- MOT TESTER
- PROCESS OPERATOR
- QUALITY & INSPECTION OFFICER
- SERVICE MANAGER
- VEHICLE FITTER
- WELDER

THE FACTS

£25,000 - £40,000

SALARY RANGE OF AN ENGINEER

DID YOU KNOW?

WE OFFER A NUMBER OF ENGINEERING DEGREE PATHWAYS VALIDATED BY THE UNIVERSITY OF WALES TRINITY SAINT DAVID.

COURSES TITLE

LEVEL

Electrical & Electronic Engineering
Electrical & Electronic 3

Engineering Construction
Engineering Construction Craft
(Welding & Fabrication) 3

Engineering Construction Craft
(Welding & Fabrication)1,2

Marine Engineering
Marine Engineering 2,3

Mechanical Engineering
Enhanced Mechanical
Engineering3

Mechanical Engineering3

Mechanical Engineering2

Mechanical Engineering Craft 2

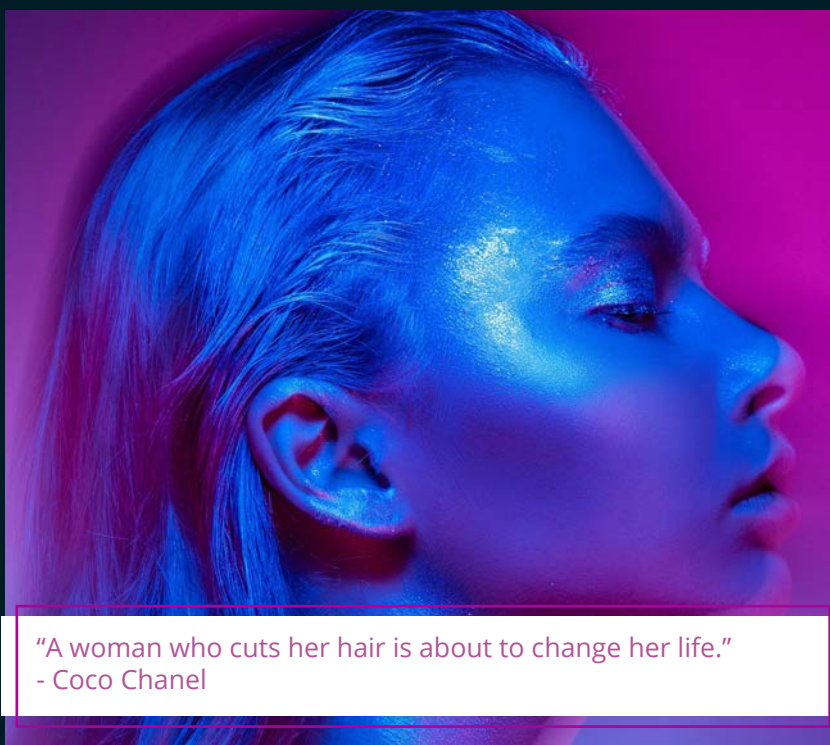
Automotive

Light Vehicle Maintenance &
Repair Principles2

Automotive Maintenance1

THINK MORE. LEARN MORE. BE MORE.

GET INDUSTRY READY



"A woman who cuts her hair is about to change her life."
- Coco Chanel

**BE BOLD. BE DARING.
BE SIMPLY BEAUTIFUL.**

If you enjoy making people look and feel amazing then our suite of hairdressing, beauty and complementary therapy courses are the first step to making it your full-time job.

Our hair and beauty salons are open to the public and re-create a real workplace environment. Level 1 courses develop your general skills such as customer service which are transferable to any career pathway as well as building basic skills in your chosen pathway. Level 2 and 3 qualify you to practice and enable you to build your technical skills and knowledge before entering employment.

Our strong links with local hotels and spas, as well as national employers such as Steiner Cruise Liners and Ragdale Hall, can open up a variety of career pathways or progression onto higher education.

FACILITIES

Your training will take place in industry standard salons and treatment rooms using the latest equipment and products including Wella, Cloud Nine, Eve Taylor, OPI and MAC.

Each year learners are encouraged to compete in regional and national competitions. In November 2019 four beauty learners competed in the WorldSkills UK Finals securing a Gold and two Bronze medals. After securing Gold Zara Morgan is now part of Squad UK and is training for a place on the UK Team competing in Shanghai in 2022.

Follow us on Facebook:



@pembs.salons

FUTURE CAREERS

- BARBER
- BEAUTY THERAPIST
- COLOUR TECHNICIAN
- COMPLEMENTARY THERAPIST
- HAIRDRESSER
- IMAGE CONSULTANT
- MAKE-UP ARTIST
- NAIL TECHNICIAN
- SALON MANAGER
- SPA THERAPIST
- WIG MAKER

THE FACTS

£20,000 - £25,000
SALARY RANGE FOR A MAKE-UP ARTIST

£15,000 - £20,000
SALARY RANGE FOR A SPA THERAPIST

£25,000 - £30,000
SALARY RANGE FOR A SALON MANAGER

DID YOU KNOW?

FORMER BEAUTY LEARNERS HAVE SECURED FULL-TIME EMPLOYMENT AT PRESTIGIOUS ESTABLISHMENTS SUCH AS RAGDALE HALL SPA, AND ONBOARD STEINER CRUISE SHIPS.

COURSES TITLE

LEVEL

Beauty1,2,3

Complementary Therapies 2,3

Hairdressing1,2,3

Part-time (1 day per week),
Apprenticeship or work based learning
pathways are also available.

THINK MORE. LEARN MORE. BE MORE.



"The greatest wealth is health." - Virgil

LOOKING FOR A CAREER THAT ALLOWS YOU TO WORK WITH A RANGE OF DIFFERENT PEOPLE?

If the answer is yes, then a course in Health and Social Care could help you reach your dream job.

The Level 1 Diploma will develop basic skills and knowledge, enabling learners to progress onto Level 2.

Level 2 is the new industry standard qualification which is mandatory for all workers employed in a care setting.

The Level 3 programme is suitable for those wishing to progress on to university in careers such as nursing, radiography, occupational therapy and social care.

Access to HE (Health and Social Care), Access to HE (Bioscience) and Skills for Further Study are suitable courses for mature learners wishing to return to learning.

FACILITIES

All courses have access to a variety of resources which would be used in care and hospital settings and some will be based in our newly refurbished laboratories.

Work placement is a fundamental part of our courses, especially on Level 2 and 3 where attendance at a placement in a care or health setting is required. Links with employers such as Hywel Dda University Health Board and care homes across the county, allow learners to apply skills they have learnt in the classroom in a real environment.

Learners are also encouraged to take part in skills competitions. Former learner Molly Lawton, was part of the UK WorldSkills Squad in 2019-21.

FUTURE CAREERS

- CARE WORKER
- FORENSIC SCIENTIST
- HEALTH VISITOR
- MIDWIFE
- NURSING (VARIOUS)
- OCCUPATIONAL THERAPIST
- PARAMEDIC
- RADIOGRAPHER
- SOCIAL WORKER
- YOUTH WORKER

THE FACTS

£27,000 - £36,000

SALARY RANGE OF A HEALTH VISITOR

£23,000 - £37,000

SALARY RANGE OF A MIDWIFE

DID YOU KNOW?

THE NHS IS THE LARGEST EMPLOYER IN THE UK HEALTH CARE SECTOR EMPLOYING MORE THAN 1.5 MILLION PEOPLE.

11,000 ARE EMPLOYED ACROSS HYWEL DDA HEALTH BOARD ALONE.

COURSES

COURSE TITLE	LEVEL
Access to HE (Health)	3
Access to HE (Bioscience)	3
Health & Social Care**	3
Health & Social Care*	2
Skills for Further Study	2
Health & Social Care	1

**Level 3 Health and Social Care - Principles and Contexts with Applied Psychology, Applied Human Biology, or Welsh Baccalaureate.

*Also available as apprenticeship or work based pathway

THINK**MORE**. LEARN**MORE**. BE**MORE**.



"Hospitality should have no other nature than love."
- Henrietta Mears

IF YOU LOVE FOOD, PEOPLE AND HAVE AN ABUNDANCE OF ENERGY, THEN A CAREER IN HOSPITALITY IS FOR YOU.

As part of our courses you will learn how to produce à la carte cuisine, as well as learning barista skills, silver service, flambé, mixology and excellent customer service skills plus so much more.

You will also be encouraged to undertake work placements. Previous placements have included: The Grove Hotel, Llys Meddyg, The Retreats Group, Hammet House, Gleneagles, Celtic Manor, Harbourmaster (Aberaeron) and Slebech Park. You will also have the opportunity to showcase your skills in competitions such as WorldSkills UK.

Learners will also take part in weekly Chefs' Forum workshops where you will learn from top names in the hospitality industry.

FACILITIES

As a hospitality and catering learner you will learn in our industry standard kitchen, training kitchen and commercial restaurant with bar and coffee shop.

You will gain skills both in the kitchens and front of house. With fine dining evenings every Thursday during term time you will also work alongside some of the top chefs in Pembrokeshire and beyond.

Our restaurant is open to the public, as well as to College staff and learners giving you the opportunity to put your skills into practise on a daily basis as well as working alongside guest chefs.

Follow us on Facebook:



@pembs.restaurant

FUTURE CAREERS

- BAR MANAGER
- CHEF (VARIOUS)
- DIETICIAN
- FOOD TECHNOLOGIST
- EVENTS MANAGEMENT
- HOSPITALITY MANAGEMENT
- HOTEL OPERATIONS
- ENVIRONMENTAL HEALTH OFFICER
- SOMMELIER
- TECHNICAL BREWER

THE FACTS

£25,000 - £30,000

SALARY RANGE FOR A DIETICIAN

£24,500 - £26,500

SALARY RANGE FOR A SENIOR CHEF

£27,500 - £30,000

SALARY RANGE FOR A SENIOR RESTAURANT MANAGER

DID YOU KNOW?

PREVIOUS LEARNERS HAVE COMPETED GLOBALLY AT THE WORLDSKILLS FINAL IN KAZAN, RUSSIA AND HAVE ALSO GAINED EXPERIENCE IN HIGH END ESTABLISHMENTS SUCH AS THE BERKELEY, LONDON, THE HOUSES OF PARLIAMENT AND THE GROVE, NARBERTH.

COURSES

TITLE	LEVEL
Professional Cookery* / Hospitality, Supervision & Leadership	3
Food Science & Nutrition	3
Professional Cookery / Culinary Skills	2
Introduction to Professional Cookery / Food & Beverage Service	1

*Also available as a part-time course, Apprenticeships or workbased pathway.

THINK**MORE**. LEARN**MORE**. BE**MORE**.



"Before you are a leader, success is all about growing yourself. When you become a leader, success is all about growing others." - Jack Welch

RISE ABOVE THE REST.

Our public services courses are the perfect preparation for learners who are looking to pursue a career in the uniformed public services, armed forces or in the civil service.

As part of our Public Services courses we'll prepare you for a career in one of the biggest employment sectors in the UK. The College works in partnership with Dyfed Powys Police which allows the learners to get a real taste of the front-line.

As a public services learner you will learn all about leadership, teamwork, citizenship and diversity as well as law and the legal system. The Military Preparation course has excellent links to the RAF, Navy and the Army. Fitness is also a key element of our courses and you'll take part in outdoor activities including climbing, orienteering and hill walking.

FACILITIES

With theory sessions based in our well-equipped classrooms you'll also undertake sessions in the sports hall and fitness suite. You will take part in a three-day expedition in North Wales.

As part of your course you'll also benefit from guest speakers a training day with the Fire Service and fitness sessions with the Military as well as benefiting from our partnership with Dyfed Powys Police.

THE SERVICES ACADEMY

The Academy is aimed at anyone looking to pursue a career with the emergency services or with the military and is open to all College learners. The Academy runs each Wednesday and will help you to build the skills needed for your chosen career.

FUTURE CAREERS

- ARMED SERVICES
- CIVIL SERVICE
- COASTGUARD
- CUSTOMS AND EXCISE
- EMERGENCY PLANNING
- FIRE SERVICE
- IMMIGRATION
- LOCAL GOVERNMENT
- PARAMEDIC
- POLICE SERVICE
- SECURITY

THE FACTS

£20,000 - £38,000

SALARY RANGE OF A POLICE OFFICER

£23,000 - £30,000

SALARY RANGE OF A PARAMEDIC

DID YOU KNOW?

FORMER MILITARY PREPARATION LEARNERS ARE NOW EMPLOYED THROUGHOUT THE ARMED FORCES INCLUDING THE ROYAL LOGISTIC CORPS, WELSH GUARD AND ROYAL MARINES.

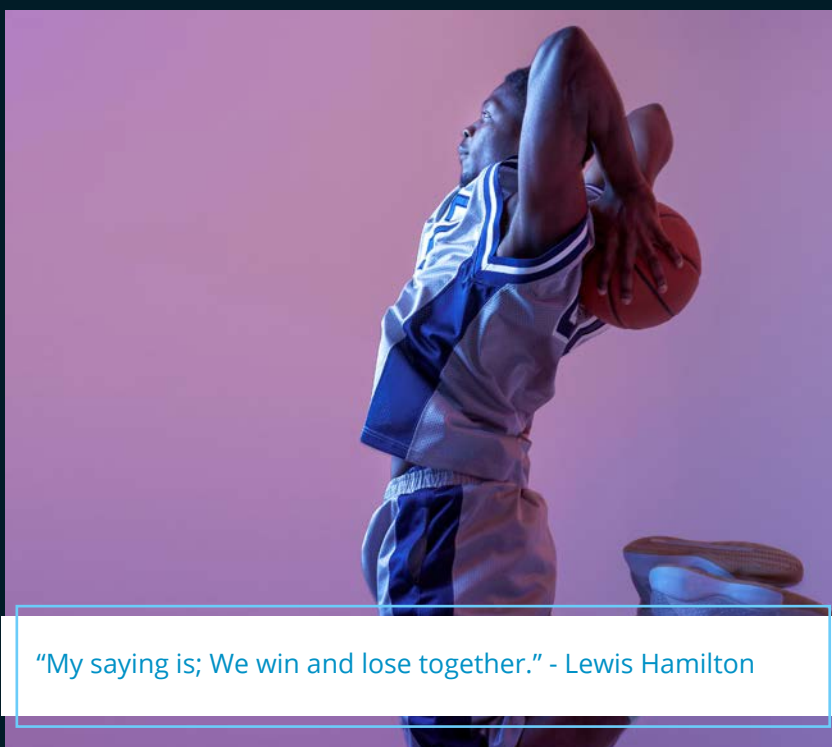
COURSES TITLE

LEVEL

Public Services (Uniformed Protective Services)	3
Preparation for the Public Services/Military	2
Military Preparation	1



Working in paid partnership with Dyfed Powys Police.



"My saying is; We win and lose together." - Lewis Hamilton

LOOKING FOR A CAREER THAT WILL DRIVE YOU FORWARD? FACILITIES

If you are passionate about sport this is the place for you. As part of our courses you will learn the theory of sport as well as having plenty of time to practise your chosen sport and develop your coaching skills.

As a sports learner you will be part of the College's Sports Academies (rugby, football and girls sports) and take part in weekly fixtures to improve your skills and build your knowledge.

All our sports courses are career-focused. Alongside the theory elements you will have the opportunity to undertake practical experience coaching pupils from local primary schools to help build your skills. You may also have the opportunity to undertake additional qualifications such as First Aid, Duke of Edinburgh, sports leaders and some coaching awards.

Enrol on one of our sports courses and you will benefit from a fully equipped cardio gym, a strength and conditioning gym, a new sports hall, and state-of-the-art classrooms.

You will also be taught by highly experienced lecturers including a former Rugby 7's International, a former International Athletics Welsh Champion, a UEFA Level 3 Football Coach and WRU Coaches.

Follow us on Twitter:



@pembssport

FUTURE CAREERS

- GYM INSTRUCTOR
- NUTRITIONIST
- OUTDOOR ADVENTURE INSTRUCTOR
- PERFORMANCE ANALYST
- PERSONAL TRAINER
- PE TEACHER
- SPORTS COACH
- SPORTS CONDITIONING THERAPIST
- SPORTS DEVELOPMENT OFFICER
- SPORTS SCIENTIST

THE FACTS

£14,000 - £30,000

SALARY RANGE OF A FITNESS INSTRUCTOR

£20,000 - £39,000

SALARY RANGE OF A PE TEACHER

£25,000 - £30,000

SALARY RANGE OF A NUTRITIONIST

DID YOU KNOW?

SPORTS LEARNERS OFTEN PROGRESS TO THE UK'S TOP SPORTS UNIVERSITY IN LOUGHBOROUGH TO UNDERTAKE DEGREE PROGRAMMES INCLUDING THE BSC IN SPORTS COACHING AND DEVELOPMENT.

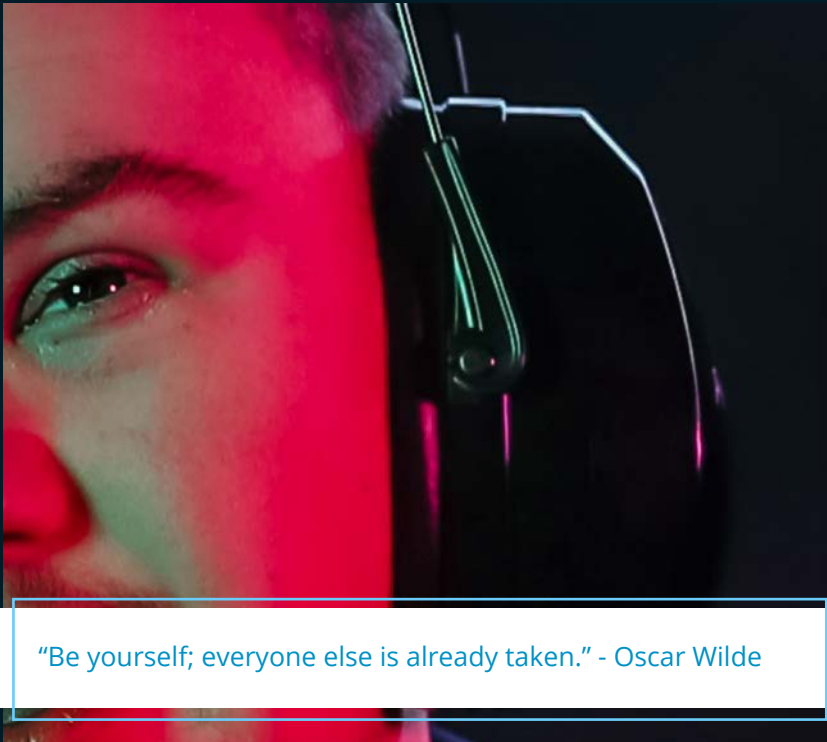
COURSES TITLE

LEVEL

Sport Coaching (1 yr course) 3

Sports Coaching & Development (2 yr course)..... 3

Sports Leadership 2



"Be yourself; everyone else is already taken." - Oscar Wilde

PREPARING YOU FOR LIFE.

The Life Skills Academy offers enriched and varied programmes which have been specifically designed to allow individuals to learn and live more independently. Learners will develop their social skills, engage with their community, improve their health and well-being, literacy, numeracy and digital literacy.

There is a highly inclusive approach to supporting Life Skills Academy learners, which starts while they are in school with College staff attending School Reviews. Learners are invited to attend a number of transition events including a Link Programme which gives learners a chance to spend up to two days in College, meeting the tutors, other learners and getting to know the College.

FACILITIES

Learners are fully supported throughout their programme by tutors and a team of experienced learning support assistants. The Life Skills Academy boasts bespoke facilities, equipment and resources for learners with a wide range of additional learning needs.

Our programmes enable learners to develop transferable skills which will help them prepare for employment opportunities and volunteering as well as helping to prepare them for independent living.

Learners also undertake work placement opportunities which are suitable for our learners needs.

OPPORTUNITIES

LEARNERS ALSO HAVE ACCESS TO SPECIALISED EQUIPMENT, RESOURCES AND SOFTWARE TO AID THEIR LEARNING, AS WELL AS ON AND OFF-SITE VOCATIONAL TRAINING FACILITIES INCLUDING:

- ANIMAL CARE
- CREATIVE ARTS
- CATERING
- LANDSCAPE & HORTICULTURE
- DRAMA
- DANCE
- SPORTS ACTIVITIES

DID YOU KNOW?

LEARNERS HAVE ACHIEVED GCSES WHILE WORK PLACEMENTS HAVE PROVIDED REAL EMPLOYMENT EXPERIENCE.

LEARNERS HAVE ALSO COMPETED IN COMPETITIONS INCLUDING THE WORLDSKILLS UK FINALS INCLUDING:

- CATERING
- FITNESS INSTRUCTION
- HORTICULTURE
- MEDIA

COURSES

TITLE	PATHWAY
Cornerstone	Pre-Entry / Entry 3
Enfys	1
Horizons	1/2
Bridging	2/3
Shine	3
Pathway Four	4

Part-time provision is available for those who do not want to commit to a full-time programme.

SAY HELLO!



pembrokeshire.ac.uk | 0800 9 776 788 | admissions@pembrokeshire.ac.uk

Disclaimer

The College takes all reasonable steps to provide the educational services and courses as described in this prospectus. Details are correct at the time of going to press but may be subject to change without prior notice. Courses will not run if learner numbers are insufficient. The College has the right to refuse individuals entry to courses in certain circumstances. Prospective learners may be advised of more suitable alternatives, if appropriate.



UNDEB EWROPEAIDD
EUROPEAN UNION



Llywodraeth Cymru
Welsh Government

**Cronfa Gymdeithasol Ewrop
European Social Fund**